

# Castles

ASKING PRICE

**£575,000**

**Ingersoll Road**

Enfield, EN3 5PU Freehold

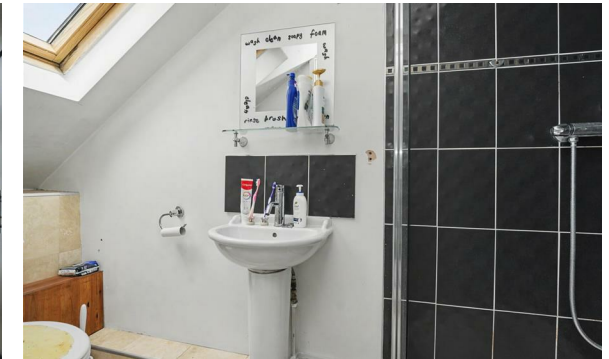


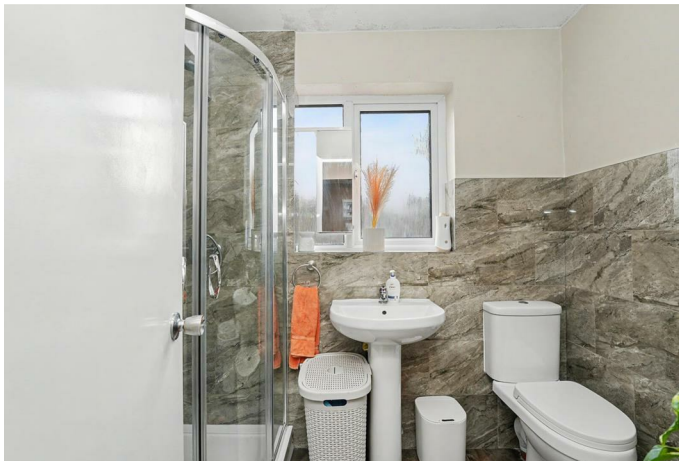
## PROPERTY SUMMARY

Arranged over 3 floors a larger than usual extended 4 bedroom end of terraced older style family house located off the Hertford Road in Enfield Highway, within approximately 0.5 miles of Turkey Street station and 0.9 miles of Brimsdown Train Station (both serving London Liverpool Street) and close to a selection of local schools, shops and amenities. The property is in good decorative order and is offered for sale chain free.

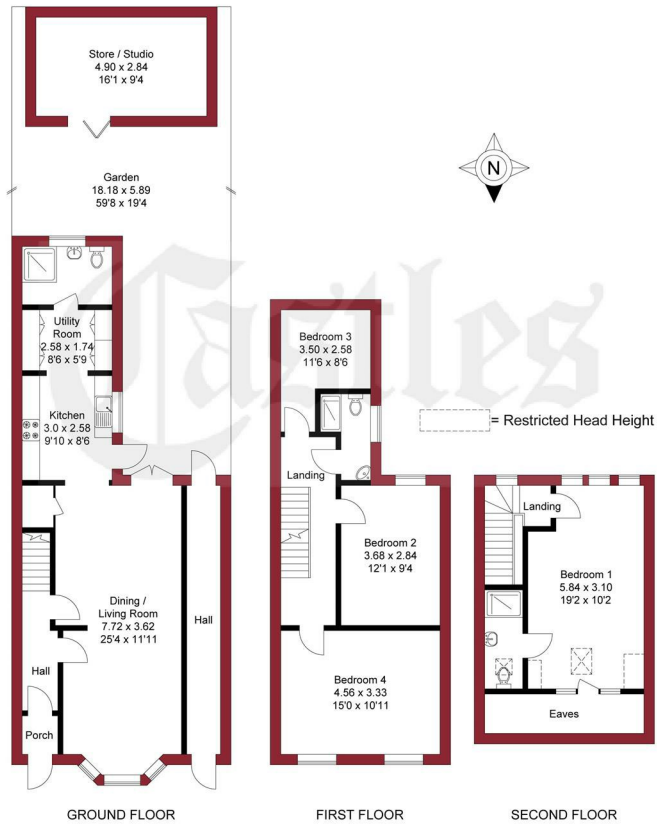
Features include:-

- Double glazing,
- Gas central heating,
- Spacious living room,
- Modern fitted kitchen,
- Utility room,
- Modern ground floor shower room,
- Modern 1st floor shower room,
- Main bedroom with en-suite shower room,
- Useful outbuilding,
- South facing garden.



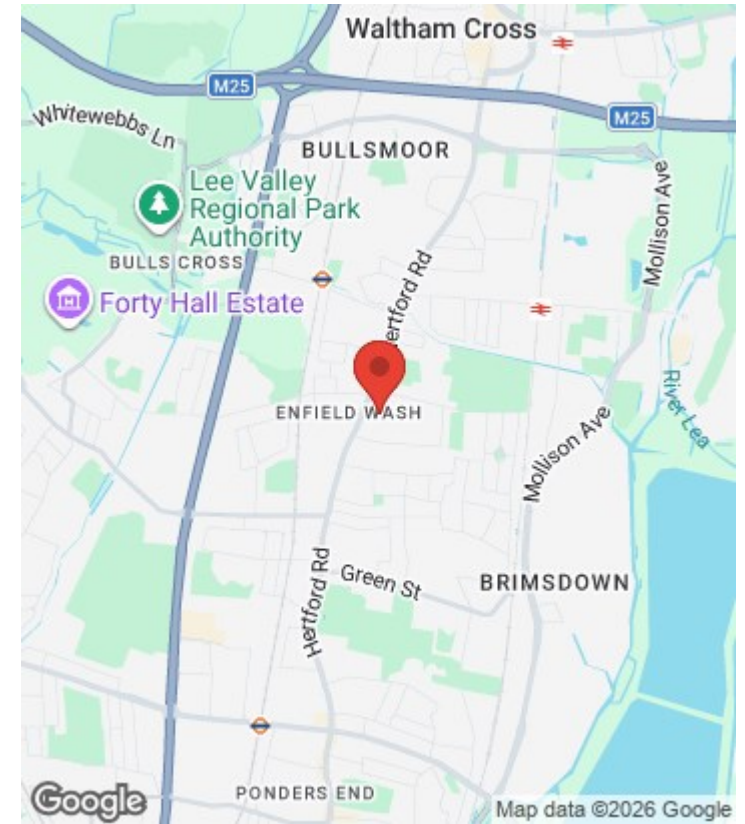


APPROXIMATE GROSS INTERNAL AREA  
 137.64 sqm / 1481.54 sqft (Excluding Outbuilding / Eaves)  
 151.56 sqm / 1631.37 sqft (Including Outbuilding)



THIS PLAN IS FOR ILLUSTRATION ONLY AND MAY NOT BE REPRESENTATIVE OF THE PROPERTY

For a guide to the area please scan this code for more information



House  
 Freehold  
**Council:** Enfield  
**Council Tax Band:** D

Agents Note: Whilst every care has been taken to prepare these particulars, they are for guidance purposes only. All measurements are approximate and are for general guidance purposes only and whilst every care has been taken to ensure their accuracy, they should not be relied upon and potential buyers/tenants are advised to recheck the measurements



**OFFICE ADDRESS**  
 243 - 245 Hertford Road  
 Enfield  
 London  
 EN3 5JJ

**OFFICE DETAILS**  
 0208 804 8000  
 enfield@castles.london  
 https://www.castles.london

