

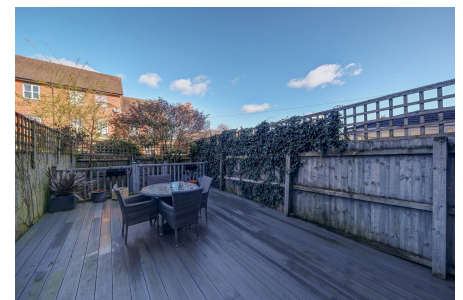
Springbank Gardens, Lymm, WA13 9GR

£400,000

 4

 2

 2



Spacious Four-Bedroom Townhouse in a Popular Location

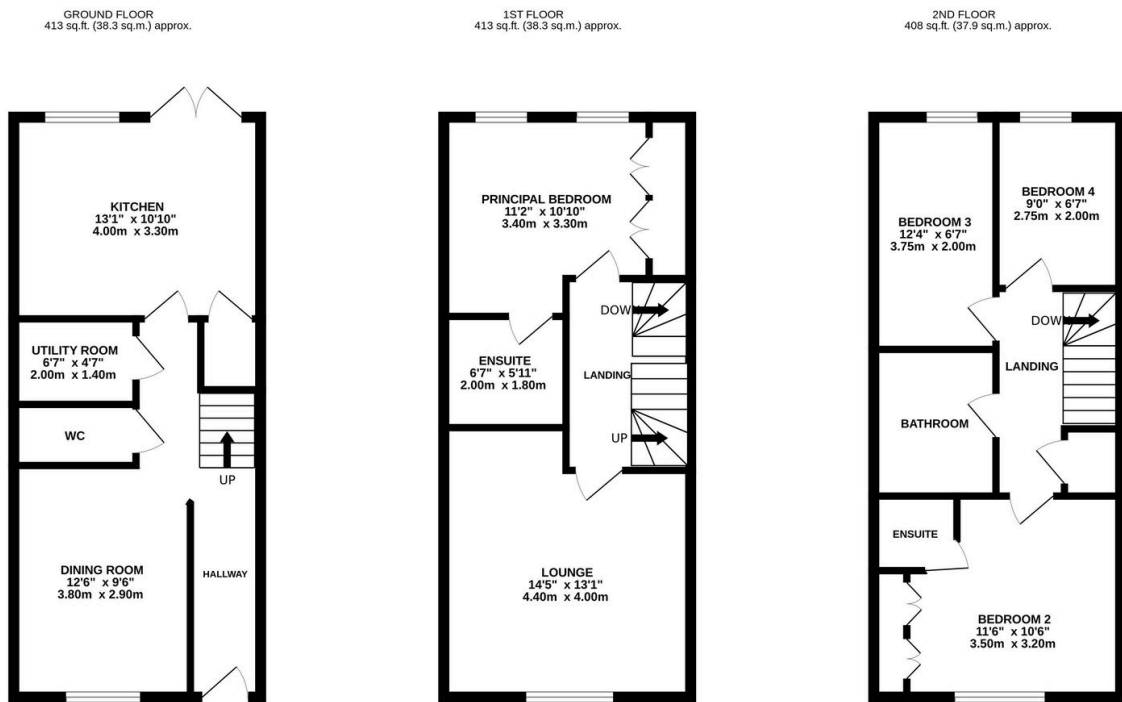
Well-presented four-bedroom home arranged over three floors, offering flexible living space ideal for families. The property features a modern kitchen with integrated appliances, separate utility room, and a bright first-floor lounge. The principal bedroom benefits from fitted wardrobes and an ensuite, with three further bedrooms, an additional ensuite, and a family bathroom.

Externally, there is a fully enclosed rear garden, garage, and parking for two vehicles. Conveniently located within walking distance of local schools and amenities.

Early viewing recommended.

Key Features

- Four bedroom home
- Flexible living accommodation ideal for families
- Two ensuite shower/bathrooms plus family bathroom
- Modern fitted kitchen with integrated appliances
- Separate utility room and ground floor cloakroom
- Bright and spacious first floor lounge
- Principal bedroom with fitted wardrobes and ensuite
- Fully enclosed rear garden with composite decking
- Garage with power, lighting, and parking for two vehicles
- Sought-after location within walking distance of schools and amenities



TOTAL FLOOR AREA: 1233 sq.ft. (114.6 sq.m.) approx.

Whilst every attempt has been made to ensure the accuracy of the floorplan contained here, measurements of doors, windows, rooms and any other items are approximate and no responsibility is taken for any error, omission or mis-statement. This plan is for illustrative purposes only and should be used as such by any prospective purchaser. The services, systems and appliances shown have not been tested and no guarantee as to their operability or efficiency can be given.

Made with Metropix ©2026