



42 | Gunton Lane | New Costessey | NR5 0AE

£210,000

 **BUTTERFLY** 
SALES, LETTINGS & PROPERTY MANAGEMENT

The Features

- Two double bedroom semi detached bungalow
- Offered with no onward chain
- Over 950 sq ft of internal accommodation
- Excellent opportunity for renovation or modernisation
- Generous 18'11 kitchen/diner overlooking the rear garden
- Front aspect lounge plus separate dining room
- Gas central heating
- Large shingled front garden with driveway to the side
- Enclosed rear garden offering a blank canvas for improvement
- Popular edge of estate location

About the Property

A fantastic opportunity to acquire a spacious two double bedroom semi detached bungalow, offered with no onward chain and ideal for those looking to take on a renovation project. Extending to over 950 sq ft, the property offers a generous and well proportioned layout, including an entrance hall, two double bedrooms, a spacious dining room, bathroom, lean-to, and a large 18'11 kitchen/diner overlooking the garden.

Requiring modernisation throughout, this home provides excellent scope to improve, reconfigure, and add value, making it perfect for investors or buyers looking to create a home tailored to their needs.





The Outside

To the front, the property is enclosed by a low level brick wall with a double metal gate, offering good frontage. The garden is laid to gravel with steps leading up to the entrance, while a driveway runs along the side of the property providing off-road parking.

To the side, there is a covered area, offering useful sheltered storage or parking potential.

The rear garden is fully enclosed and offers a blank canvas for landscaping or improvement, with the added benefit of a garden shed.



Location Overview

Situated in the popular area of New Costessey, this property enjoys a convenient position close to a range of local amenities and green spaces. Gunton Lane Recreational Park and Red Bridge Park are both within easy reach, offering open spaces, play areas, and access to scenic river walks along the nearby River Wensum.

The area is well served by local shops, schools, and regular transport links into Norwich city centre, making it a practical choice for a range of buyers. With a blend of everyday convenience and access to outdoor space, this location is ideal for those looking to enjoy both town and country surroundings.

Directions

The property is located on Gunton Lane. If approaching from Olive Road, turn left onto Gunton Lane, where the property will be found as the first bungalow on the left-hand side.

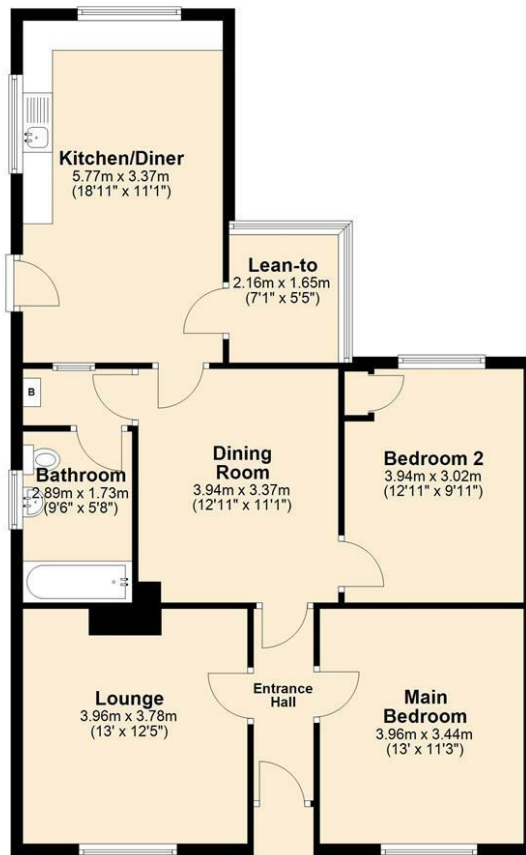
What3Words: ///tidy.limes.sweep

AGENTS NOTE

We have been informed by the owner that residents are responsible for the portion of Gunton Lane directly outside their property. We advise that buyers seek legal clarification on this point prior to purchase.



Ground Floor
Approx. 90.8 sq. metres (977.2 sq. feet)



Total area: approx. 90.8 sq. metres (977.2 sq. feet)

Every effort has been made to ensure the accuracy of the floorplan provided. However, measurements of doors, windows, rooms, and other items are approximate, and no responsibility is accepted for any errors, omissions, or inaccuracies. This floorplan is for illustrative purposes only and should be used as such by prospective tenants. The services, systems, and appliances depicted have not been tested, and no guarantee is made regarding their functionality or efficiency.
Plan produced using PlanUp.

Energy Efficiency Rating	
	Potential
Very energy efficient - lower running costs	
(92 plus) A	
(81-91) B	
(69-80) C	
(55-68) D	
(39-54) E	
(21-38) F	
(1-20) G	
Not energy efficient - higher running costs	
England & Wales	EU Directive 2002/91/EC

Tenure: Freehold
Council Tax Band: C
Local Authority: South Norfolk



You can also scan the QR code to view the property online. This will take you directly to our website, where you'll find additional photos, detailed floorplan, and all the key information in line with Parts A, B, and C of the Material Information guidance for property listings. You'll also be able to browse our other available properties there.



Butterfly Homes | 6 Church Lane | Eaton | NR4 6NZ
sales@butterflyhomes.co.uk
www.butterflyhomes.co.uk
01603 870870



Butterfly Lettings, trading as Butterfly Homes, and its representatives are not authorised to make statements or assurances about the property, whether on their own behalf or on behalf of the client. No responsibility is accepted for any statements contained in these particulars, which do not form part of any offer or contract. We have taken care to ensure that the details provided for each property are accurate at the time of listing. However, the information supplied is intended as a guide only, and we do not obtain confirmation from the seller's legal representative when preparing it. Buyers should verify any leasehold details, charges, or other matters through their own legal representatives. All measurements, areas, and distances are approximate. Fixtures, fittings, and appliances have not been tested, so we cannot guarantee that they are in working order. It should not be assumed that the property has all necessary planning permissions, building regulations, or other consents. We recommend checking the local council's website for information on conservation areas, flood risks, tree preservation orders, planning applications, and other relevant matters. We also advise reviewing the property and surrounding area using Google Maps or Street View before attending a viewing. Photographs are for illustration only and should not be taken as confirmation that any items shown are included in the sale. If any particular detail is important to you, please seek independent professional verification before proceeding. Referral Fees: Butterfly Homes may receive a referral fee from recommended solicitors, mortgage advisers, or other service providers. Any referral arrangement will not affect the cost or quality of the service provided.

We are Butterfly Lettings LTD trading as Butterfly Homes with registered number 15893663 and address C/O Shaw & Co 3 Colegate Norwich Norfolk NR3 1BN