



OVER 60?

Secure this property
for up to **59% less!**

Price

£365,000

Freehold

3x  2x  2x 

**Main Road, Whiteley
Bank, Isle of Wight,
PO38**

Pittis 
Helping you move forwards

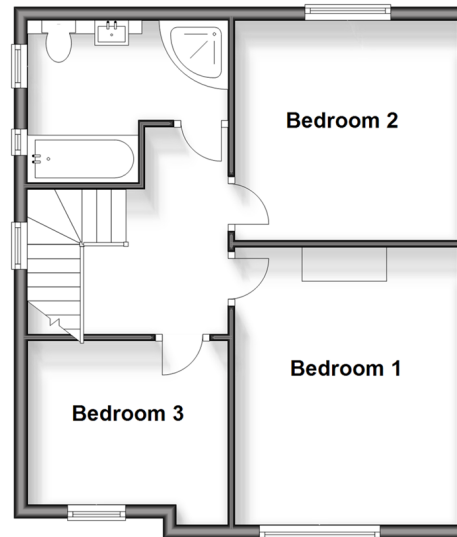
Ground Floor

Approx. 107.1 sq. metres (1153.2 sq. feet)



First Floor

Approx. 46.9 sq. metres (504.3 sq. feet)



Accommodation

GROUND FLOOR

Porch

Hallway

Lounge: 13'7 x 13'5 (4.14m x 4.09m)

Kitchen: 10'10 x 10'0 (3.30m x 3.05m)
narrowing to 7'2 x 9'5 (2.19m x 2.87m)

Utility Room: 8'3 x 5'8 (2.52m x 1.73m)

Shower Room

Dining Area: 10'10 x 10'10 (3.30m x 3.30m)

Sun Room: 20'11 x 10'7 (6.38m x 3.23m)

FIRST FLOOR

Landing

Bedroom 1: 13'5 x 11'1 (4.09m x 3.38m)

Bedroom 2: 11'1 x 10'10 (3.38m x 3.30m)

Bedroom 3: 9'7 x 7'10 (2.92m x 2.39m)

Bathroom

OUTSIDE

Front & Rear Garden

Garage & Driveway



Main features

- Detached individual home in a rural location
- Large sun room to the rear and separate utility room
- Garage and plenty of off road parking for multiple cars
- Good sized wrap around gardens with views from the front
- Immaculately presented throughout



Nearest Schools

The Bay CE School
Broadlea Primary School
Shanklin C of E Primary Schools
Gatten & Lake Primary School
Shanklin Pre-School & Nursery



Transport Information

Local buses providing Island wide connections plus local train station with direct links to Ryde Pier Head.



Address

Main Road, Whiteley Bank, Isle of Wight, PO38



Directions

For directions to this property please contact us.

