



10 Lawnswood Close, Dibden Purlieu, SO45 4AX
£489,950



ANTHONY JAMES
PROPERTIES



10 Lawnswood Close

Dibden Purlieu, Southampton

This impressive three-bedroom detached house offers the potential for space and comfort, perfectly suited for family living. Presented with no onward chain and very much a blank canvas both inside and outside.

Featuring an impressive four parking spaces (plus potential to extend parking), double garage, kitchen, dining room, lounge and w/c plus four first floor bedrooms and family bathroom. Whilst the property requires refurbishment, it is ideally placed in Dibden Purlieu for those seeking village life and proximity to local schools.

Finally the rear garden is laid mainly to lawn with a few mature low level shrubs and offers space to either extend or improve.

Available with no onward chain.

Council Tax band: TDB

Tenure: Freehold



1 Southward House
Dibden Purlieu SO45 4PT

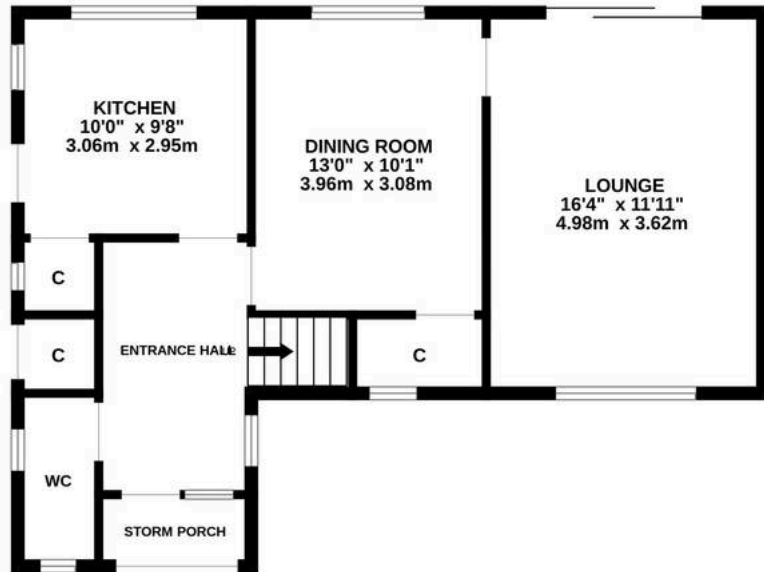


T: 02380 844405

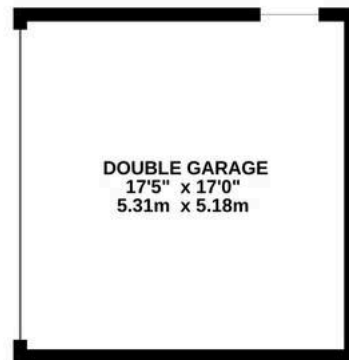
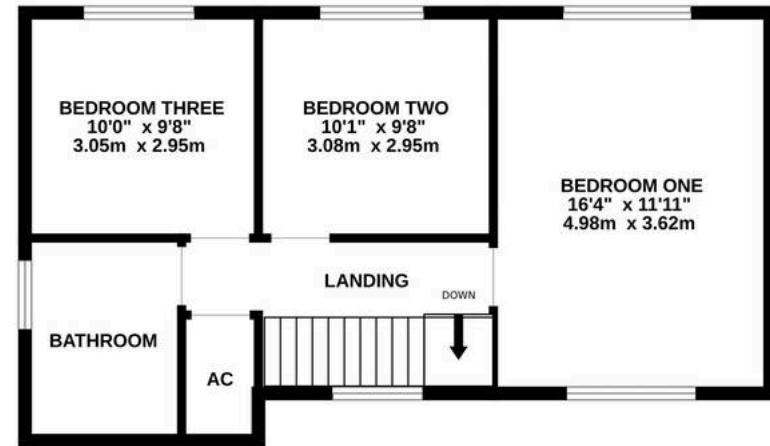
info@anthonyjamesproperties.co.uk



GROUND FLOOR



1ST FLOOR



Whilst every attempt has been made to ensure the accuracy of the floorplan contained here, measurements of doors, windows, rooms and any other items are approximate and no responsibility is taken for any error, omission or mis-statement. This plan is for illustrative purposes only and should be used as such by any prospective purchaser. The services, systems and appliances shown have not been tested and no guarantee as to their operability or efficiency can be given.
Made with Metropix ©2026