

## Holloway Road, N19

£200,000

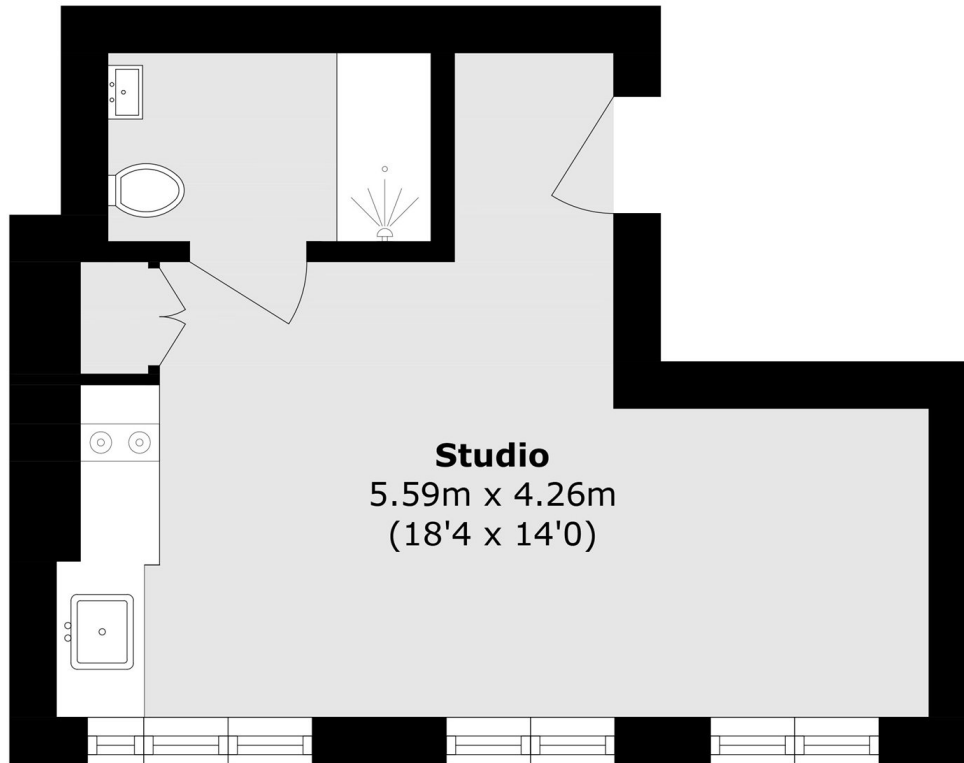
A well-presented studio flat offering a spacious living space with high ceilings, large windows and an abundance of natural light. This property is ideal for first time buyers or investors, with superb transport links nearby.

The property is superbly located within walking distance of Archway station (Northern line), Upper Holloway Overground, and 24-hour bus routes, with Hampstead Heath and Waterlow Park nearby.

### Features

- Studio Apartment
- Period Conversion
- Good Transport Links
- Wooden Flooring
- High Ceilings
- Long Lease

# Holloway Road, London, N19



## First Floor

Total area (approx.): 18.7 sq. m (201.2 sq. ft)