



REAL ESTATE

ESTATE AGENCY · REDEFINED



Bastien Lane

West Malling | ME19 4LX



REAL ESTATE

ESTATE AGENCY · REDEFINED

Bastien Lane

Kings Hill, West Malling, ME19 4LX

Stunning One Bedroom Ground Floor Flat in the Popular Village of Kings Hill

Beautifully presented and updated throughout, this superb ground floor apartment is set in the highly sought-after village location of Kings Hill. The property offers stylish open-plan living, featuring a bright and spacious living area, a modern fitted kitchen, a generous double bedroom, and a beautifully finished bathroom.

Further benefits include allocated parking and convenient ground floor access. Ideal for first-time buyers, downsizers, or investors, this home is ready to move straight into and enjoy.

£215,000



Entrance Hall

Living Room

13'5 x 11'9 (4.09m x 3.58m)

Kitchen

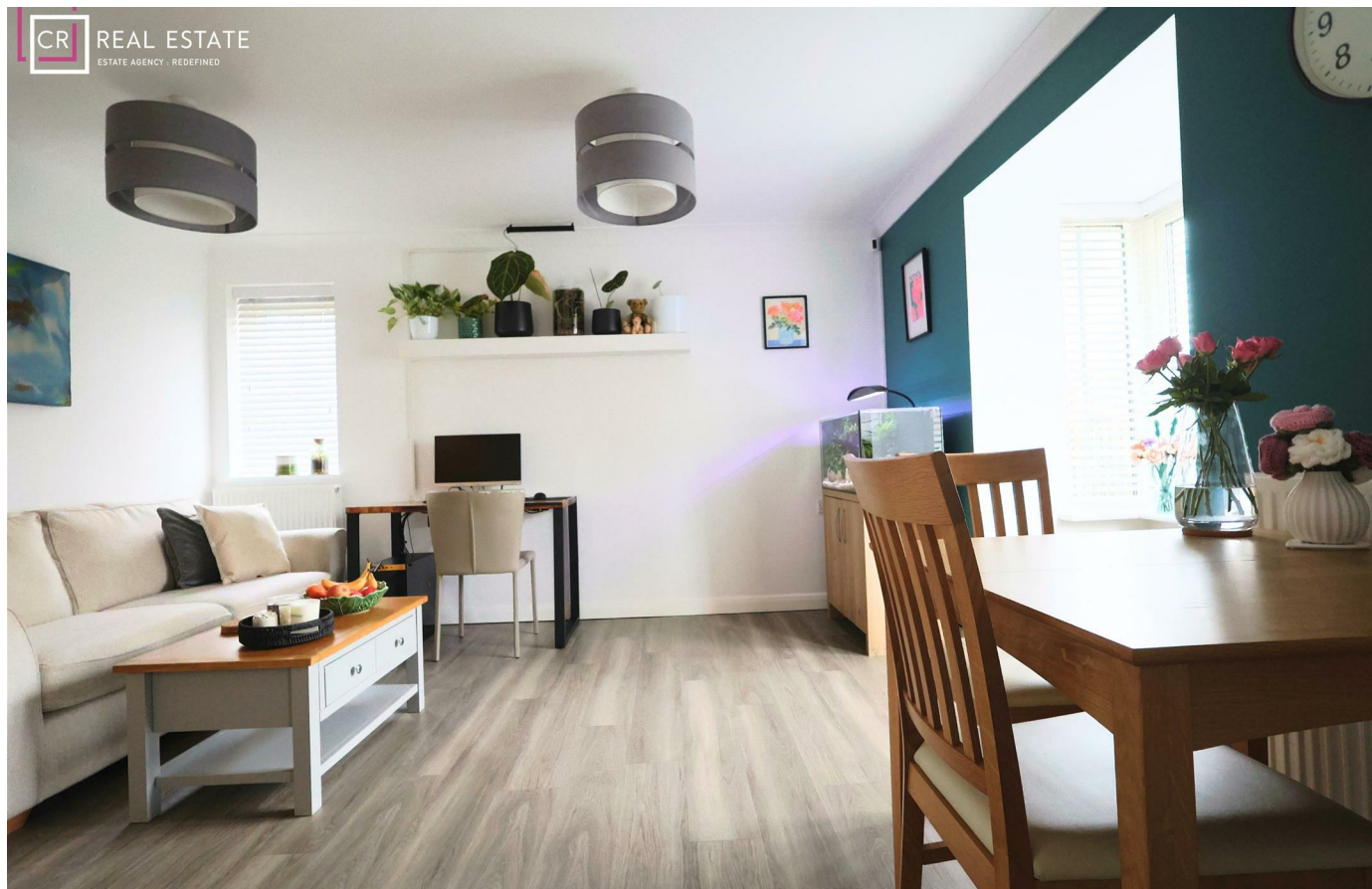
9'6 x 6'8 (2.90m x 2.03m)

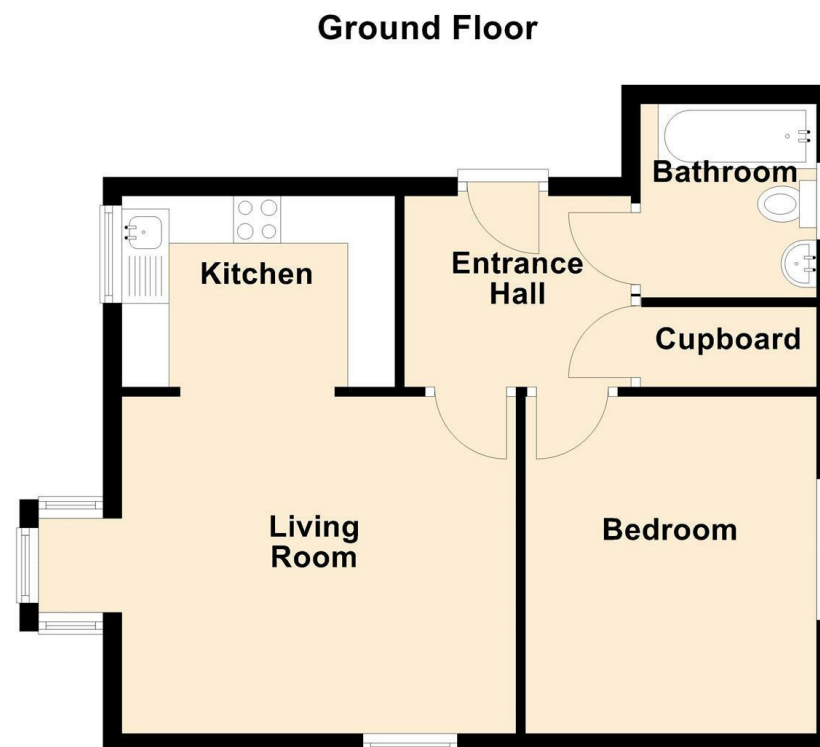
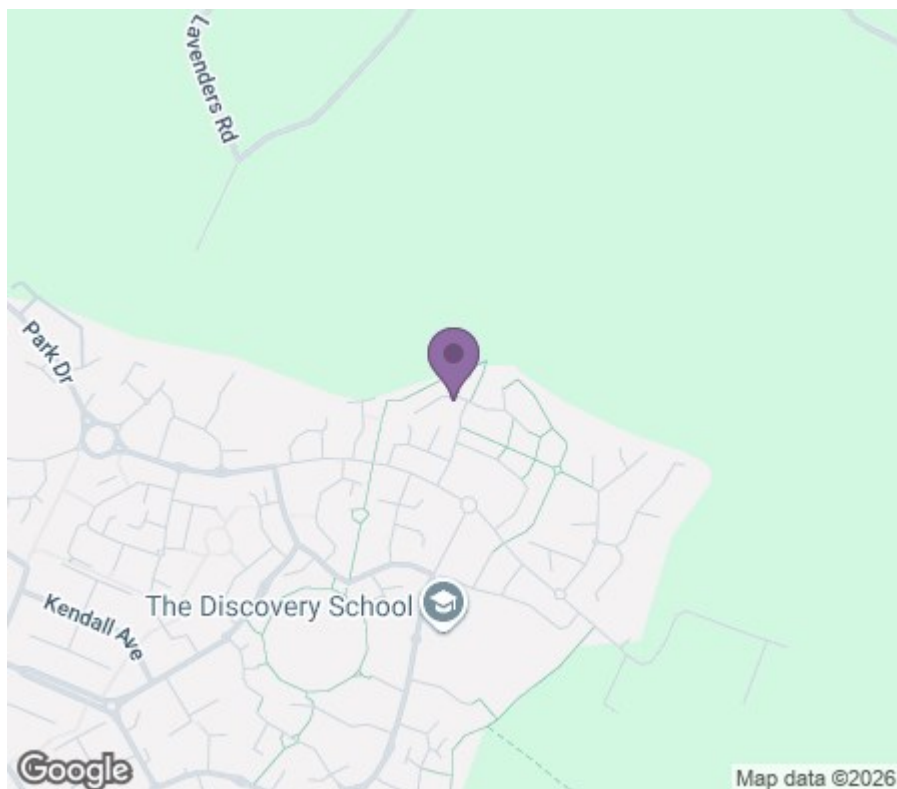
Bedroom

12'0 x 10'2 (3.66m x 3.10m)

Bathroom

6'9 x 6'2 (2.06m x 1.88m)





18 - 20 High Street
Gillingham

Kent
ME7 1BB

01634 570057

www.crrealestate.co.uk

twitter.com/CRRealEstateUK

facebook.com/CRRealEstateUK



Energy Efficiency Rating		
	Current	Potential
Very energy efficient - lower running costs		
(92 plus) A		
(81-91) B		
(69-80) C		
(55-68) D		
(39-54) E		
(21-38) F		
(1-20) G		
Not energy efficient - higher running costs		
England & Wales	EU Directive 2002/91/EC	

Environmental Impact (CO ₂) Rating		
	Current	Potential
Very environmentally friendly - lower CO ₂ emissions		
(92 plus) A		
(81-91) B		
(69-80) C		
(55-68) D		
(39-54) E		
(21-38) F		
(1-20) G		
Not environmentally friendly - higher CO ₂ emissions		
England & Wales	EU Directive 2002/91/EC	

CR Real Estate endeavour to maintain accurate depictions of properties in Virtual Tours, Floor Plans and descriptions, however, these are intended only as a guide and purchasers must satisfy themselves by personal inspection.