

shepherds

A better home
moving experience



24 Byde Street
Bengeo, SG14 3AR

Guide Price £525,000



24 Byde Street

Bengeo, SG14 3AR

Situated in the heart of highly sought-after Lower Bengeo, this beautifully presented three bedroom Victorian cottage effortlessly combines period charm with stylish modern living. Just a short walk from Hertford town centre, Hertford North station, Hartham Common and the River Lea, the property enjoys one of Hertford's most desirable and convenient locations.

The accommodation is arranged over three floors and offers a wonderful blend of character features and practical living space. At the heart of the home is a superb kitchen/breakfast/dining room, flooded with natural light from its dual aspect and Velux windows above. Finished with granite worktops, integrated appliances and ample space for dining and entertaining, it is a room perfectly suited to modern family life. French doors open directly onto the rear courtyard garden, seamlessly connecting the indoor and outdoor space.

To the front of the property, the cosy living room is packed with character, featuring a bay window with window seat and an exposed brick chimney breast with log burner creating a fantastic focal point.

The lower ground floor provides valuable additional accommodation and is currently utilised as a home office, although it would work equally well as a fourth bedroom, family room, playroom, guest bedroom or hobby room depending on individual requirements.

The first floor comprises three bright and well-proportioned bedrooms together with a modern family bathroom.

Externally, the property benefits from a private and low-maintenance courtyard, ideal for relaxing or entertaining, with useful side access leading back to the front of the property.

Lower Bengeo remains one of Hertford's most sought-after neighbourhoods, renowned for its character homes, excellent schooling, riverside walks and easy access to both Hertford North station and the vibrant town centre.

A wonderful Victorian home in a location where demand consistently remains high.

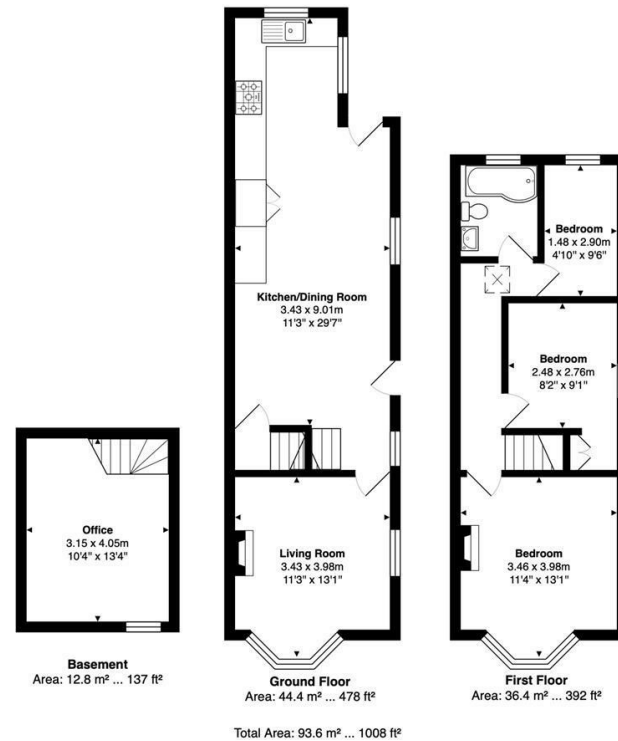




- Beautifully presented three bedroom Victorian cottage
- Highly sought-after Lower Bengoe location
- Arranged over three floors with versatile accommodation
- Stunning kitchen/breakfast/dining room with granite worktops
- Characterful living room with bay window and log burner
- Useful lower ground floor home office/family room
- Three bright and well-proportioned bedrooms
- Private and low-maintenance courtyard garden with side access
- Walking distance to Hertford town centre and Hertford North station
- Close to Hartham Common, the River Lea and excellent local schools



Floor Plan

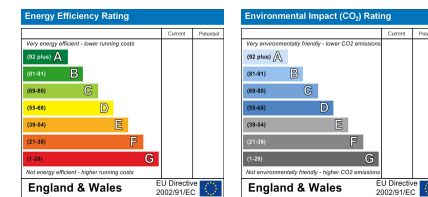


FOR ILLUSTRATIVE PURPOSES ONLY: NOT TO SCALE
Whilst every attempt has been made to ensure the accuracy of the floor plan shown, all measurements, positioning, fixtures, features, fittings and any other data shown are an approximate interpretation for illustrative purposes only and are not to scale. No responsibility is taken for any error, omission, miss-statement or use of data shown.
[Property marketing provided by www.matthewkyle.co.uk](http://www.matthewkyle.co.uk)

Viewing

Please contact Shepherds of Hertford on 01992 551955 if you wish to arrange a viewing appointment for this property or require further information.

Energy Performance Graph



These particulars, whilst believed to be accurate are set out as a general outline only for guidance and do not constitute any part of an offer or contract. Intending purchasers should not rely on them as statements of representation of fact, but must satisfy themselves by inspection or otherwise as to their accuracy. No person in this firm's employment has the authority to make or give any representation or warranty in respect of the property.

Riverside House, 6 Millbridge, Hertford, SG14 1PY
Tel: 01992 551955 Email: enquiries@shepherdsfhertford.co.uk