

**4 Bed
House - End Terrace
located in Fishponds**



50 Berkeley Road
Fishponds
Bristol
BS16 3NB



£2,200 Per month

Barkley Road, Fishponds | £2,200 pcm

4 Bedroom Furnished Student Home | End-of-Terrace | September

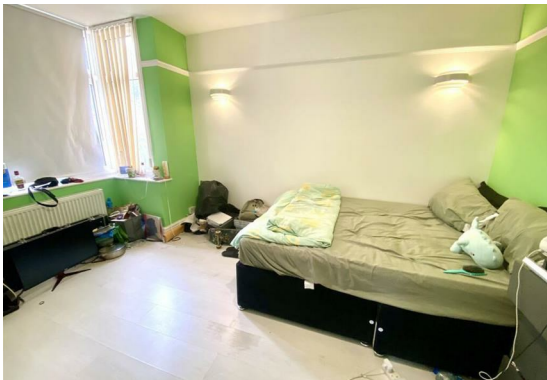
A well-presented and fully furnished four-bedroom end-of-terrace home, offered to the student rental market and ideally located for UWE and the city's major employers. Spacious, well-maintained, and ready to move into, this is a great option for a group of students looking for comfort and convenience.

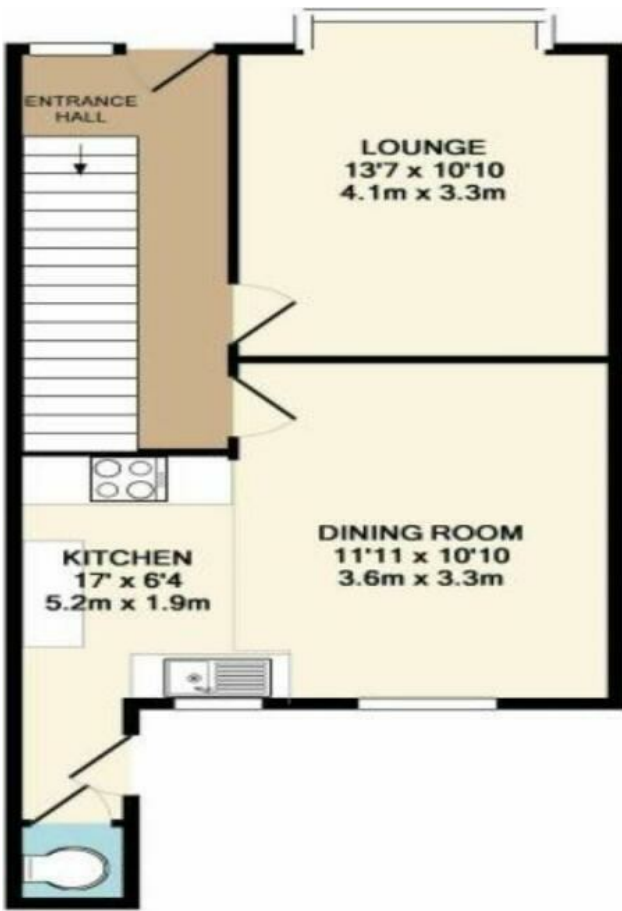
The ground floor comprises an entrance hall, cloakroom/WC, a living room (which can serve as Bedroom 1), a communal room, and a recently refitted kitchen. To the first floor there are three good-sized bedrooms, along with a refitted bath/shower room and a separate WC.

The home benefits from gas central heating and double glazing throughout, keeping running costs sensible and the house warm through the colder months.

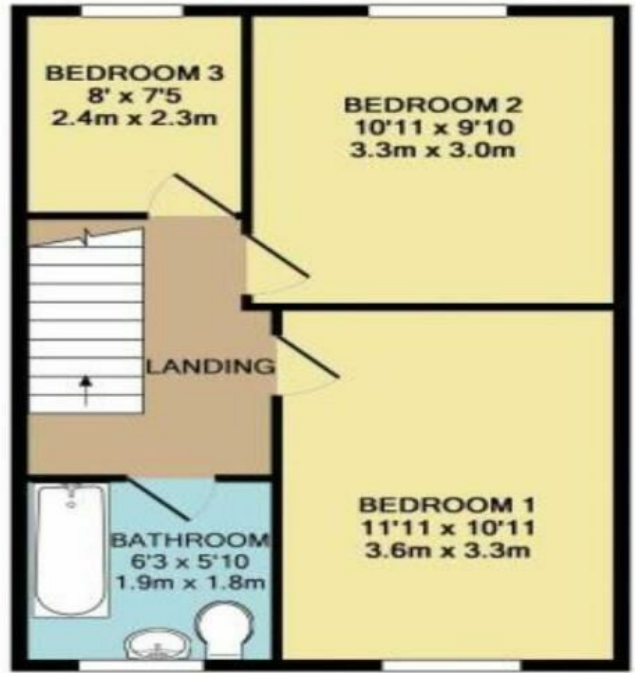
There are front and rear gardens, plus off-road parking - a real bonus in this part of Fishponds.

- White goods included: washing machine, fridge/freezer, dishwasher, and electric hob/electric oven
- Gas central heating and double glazing
- Front and rear gardens
- Off-road parking






GROUND FLOOR



1ST FLOOR

Made with Metropix ©2017

Energy Efficiency Rating		Current	Potential
<i>Very energy efficient - lower running costs</i>			
(92 plus) A			
(81-91) B			
(69-80) C			
(55-68) D		64	
(39-54) E			
(21-38) F			
(1-20) G			
<i>Not energy efficient - higher running costs</i>			
England & Wales		EU Directive 2002/91/EC 	

DIRECTIONS

CONTACT

Shore House Westbury Hill
Westbury-on Trym, Bristol
BS9 3AA

E: elliott.sherwood@frontdoorlettings.co.uk

T: 0117 457 8577

frontdoorlettings.co.uk

