



Strand
London, WC2R

CHESTERTONS





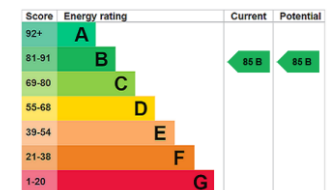
We are delighted to present this exceptional one-bedroom apartment in the prestigious Milford House development and represents one of the finest investment opportunities in Prime Central London today.

Located at the world-famous 190 The Strand in the heart of Westminster, this immaculate residence offers the discerning buyer a rare chance to own a piece of London's most illustrious neighbourhood, where iconic landmarks, world-class theatres, and the Thames converge in perfect harmony.

Positioned on The Strand, one of London's most historic and prestigious thoroughfares, you'll be moments from:

Covent Garden - London's cultural and shopping heart
The Royal Opera House - world-class performances on your doorstep
Somerset House - iconic riverside landmark
Temple and Embankment stations - seamless connectivity across London
The Thames - riverside walks and stunning city views

Asking Price £1,400,000

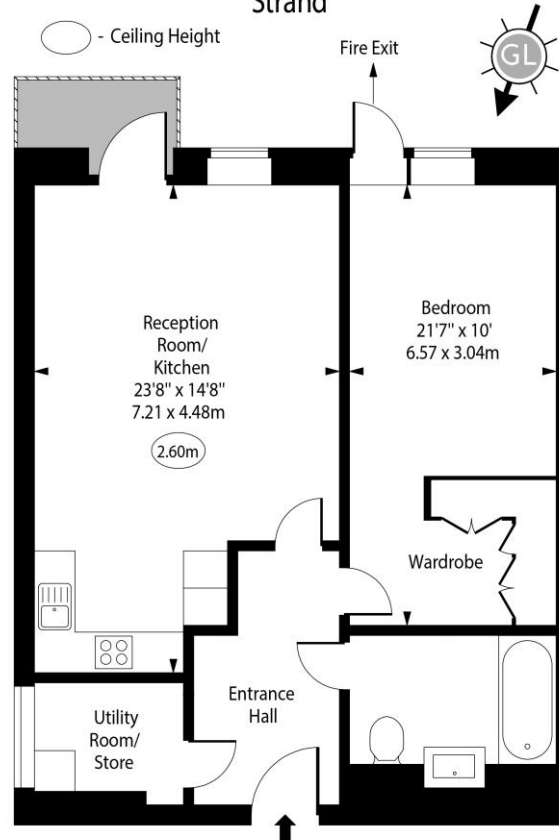


Tenure: Leasehold 991 years
Service Charge: £10,400 per year
Ground Rent: £1,200 per year
Local Authority: City Of Westminster
Council Tax Band: G

Chestertons Covent Garden Sales

196 Shaftesbury Avenue
London
WC2H 8JF
coventgarden@chestertons.co.uk
020 3040 8300
chestertons.co.uk

Milford House,
Strand



Third Floor

Approx Gross Internal Area 746 Sq Ft - 69.30 Sq M

Every attempt has been made to ensure the accuracy of the floor plan shown. However, all measurements, fixtures, fittings, and data shown are approximate interpretations and for illustrative purposes only. Measured according to the RICS. Not To Scale.

www.goldlens.co.uk

Ref. No. 031720D

