



115 Gorsey Lane, Ford

£135,000

3 1

Fantastic Value, Move In & Make It Your Own!

A well-maintained three-bedroom semi-detached home on Gorsey Lane, offering spacious living, off-road parking, and a private rear garden. Ready to move straight into, with great potential to add your own style and value. Ideal for first-time buyers, families or investors. This won't be around for long so don't miss out!

- No chain!
- Three well-proportioned bedrooms
- Tidy, move-in ready condition
- Scope to modernise and add value
- Private rear garden
- Convenient location close to amenities and transport links



Floor Area: 732 sq. ft.

Tenure: Freehold

Service Charge: £0 per annum

Ground Rent: £0 per annum

19/05/2026, 10:48 Energy performance certificate (EPC) - Find an energy certificate - GCNCLIK

Energy performance certificate (EPC)		
10 GOSWOLD LANE LITTLERLAND LONDON	Energy rating C	Valid until 6 May 2031
Property type Total floor area	Mid-terrace house 62 square metres	Certificate number 0637-0004-5205-9509-1200

Rules on letting this property

Properties can be let if they have an energy rating from A to E.

You can read guidance for landlords on the regulations and exemptions (<https://www.gov.uk/guidance/landlord-exemptions>)

Energy rating and score

This property's energy rating is C, it has the potential to be B.

[Click here to introduce this energy rating to your website](#)

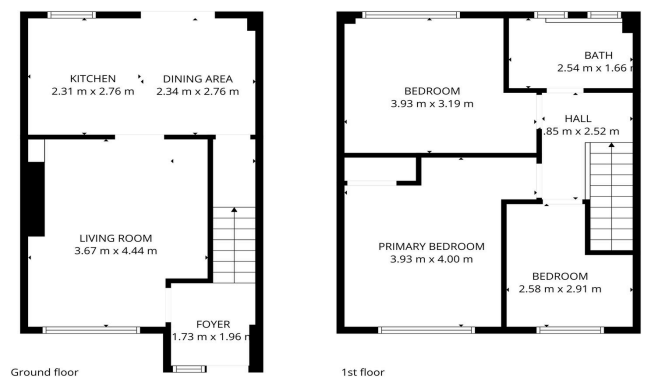
The graph shows this property's current and potential energy rating.

Properties get a rating from A (best) to G (worst) and a score. The better the rating and score, the lower your energy bills are likely to be.

For properties in England and Wales:
The average energy rating is D
The average energy score is 50

<https://find-energy-certificates.service.gov.uk/energy-certificates/0637-0004-5205-9509-1200?print=true>

1/4



TOTAL: 79 m²
Ground floor: 36 m², 1st floor: 43 m²
EXCLUDED AREAS: WALLS: 8 m²