



Changi Road, Watton Thetford IP25 6JA

welcome to

Changi Road, Watton Thetford

>> THREE-BEDROOM HOUSE WITH POTENTIAL! Offering generous accommodation, a large enclosed rear garden, off-road parking, and scope to extend (STPP), this property is perfectly suited to buyers looking to create their ideal family home.



Auctioneer's Comments

This property is offered through Modern Method of Auction. Should you view, offer or bid your data will be shared with the Auctioneer, iamsold Limited. This method requires both parties to complete the transaction within 56 days, allowing buyers to proceed with mortgage finance (subject to lending criteria, affordability and survey). The buyer is required to sign a reservation agreement and make payment of a non-refundable Reservation Fee of 4.5% of the purchase price including VAT, subject to a minimum of £6600.00 including VAT. This fee is paid in addition to purchase price and will be considered as part of the chargeable consideration for the property in the calculation for stamp duty liability. Buyers will be required to complete an identification process with iamsold and provide proof of how the purchase would be funded. The property has a Buyer Information Pack containing documents about the property. The documents may not tell you everything you need to know, so you must complete your own due diligence before bidding. A sample of the Reservation Agreement and terms and conditions are contained within this pack. The buyer will also make payment of no more than £349 inc. VAT towards the preparation cost of the pack. Please confirm exact costs with the auctioneer. The estate agent and auctioneer may recommend the services of other providers to you, in which they will be paid for the referral. These services are optional, and you will be advised of any payment, in writing before any services are accepted. Listing is subject to a start price and undisclosed reserve price that can change.

Entrance Hall

Radiator, UPVC double glazed door to the front aspect

Lounge

Radiator, Electric fireplace, Double glazed window to the rear aspect

Kitchen

Vinyl flooring, 1.5 sink/drain, Range of wall-mounted low-level units, Complimentary rolled edge worksurfaces, Space for oven, fridge freezer and dishwasher, Double glazed window to the rear aspect

Utility Room

Space for washing machine

First Floor Landing

Storage/Airing cupboard, Loft access

Bedroom One

Radiator, Double glazed window to the rear aspect

Bedroom Two

Radiator, Double glazed window to the front aspect, Storage cupboard

Bedroom Three

Radiator, Double glazed window to the rear aspect, Storage cupboard

Bathroom

Radiator, Panelled bath, Pedestal handwash basin, Extractor fan, Frosted double glazed window to the front aspect

WC

Double glazed window to the front aspect, Low-level WC

Outside

To the front of the property there is a large shingle driveway with parking for 2 cars and an open area laid to lawn. To the rear of the property there is a large fully enclosed garden, laid to lawn.



view this property online williamhbrown.co.uk/Property/WAT109024



welcome to

Changi Road, Watton Thetford

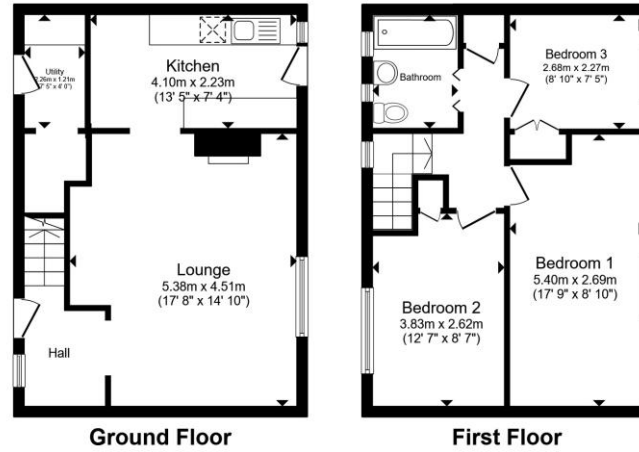
- Sale by Modern Auction (T&Cs apply)
- Subject to an undisclosed Reserve Price
- Buyers fees apply
- Spacious Three-Bedroom House
- Excellent Potential to Extend (STPP)

Tenure: Freehold EPC Rating: Awaited

Council Tax Band: A

guide price

£130,000



Total floor area 84.0 m² (905 sq.ft.) approx

This floor plan is for illustrative purposes only. It is not drawn to scale. Any measurements, floor areas (including any total floor area), openings and orientation are approximate. No details are guaranteed, they cannot be relied upon for any purpose and they do not form part of any agreement. No liability is taken for any error, omission or misstatement. A party must rely upon its own inspection(s). Powered by www.propertybox.io



Please note the marker reflects the postcode not the actual property

view this property online williamhbrown.co.uk/Property/WAT109024



Property Ref:
WAT109024 - 0002

1. MONEY LAUNDERING REGULATIONS Intending purchasers will be asked to produce identification documentation at a later stage and we would ask for your co-operation in order that there is no delay in agreeing the sale. 2. These particulars do not constitute part or all of an offer or contract. 3. The measurements indicated are supplied for guidance only and as such must be considered incorrect. Potential buyers are advised to recheck measurements before committing to any expense. 4. We have not tested any apparatus, equipment, fixtures or services and it is in the buyers interest to check the working condition of any appliances. 5. Where an EPC, or a Home Report (Scotland only) is held for this property, it is available for inspection at the branch by appointment. If you require a printed version of a Home Report, you will need to pay a reasonable production charge reflecting printing and other costs. 6. We are not able to offer an opinion either written or verbal on the content of these reports and this must be obtained from your legal representative. 7. Whilst we take care in preparing these reports, a buyer should ensure that his/her legal representative confirms as soon as possible all matters relating to title including the extent and boundaries of the property and other important matters before exchange of contracts.

William H Brown is a trading name of Sequence (UK) Limited which is registered in England and Wales under company number 4268443, Registered Office is Cumbria House, 16-20 Hockliffe Street, Leighton Buzzard, Bedfordshire, LU7 1GN. VAT Registration Number is 500 2481 05.

william h brown



01953 881951



Watton@williamhbrown.co.uk



9 High Street, Watton, THETFORD, Norfolk,
IP25 6AB



williamhbrown.co.uk