





Ringwood Way, Winchmore Hill, London,
N21

Offers in the region of £1,150,000

Addison Townsend are delighted to bring to the market this lovely and well-presented semi-detached house situated in a prime location in Winchmore Hill within 0.2 miles of Winchmore Hill Overground Station, close proximity to The Green with its local shops, pubs, restaurants, bus routes and Grovelands Park. The accommodation offers a welcoming entrance, through reception room, kitchen/dining area, downstairs W/C, four bedrooms, family bathroom and beautiful garden. Further benefits include garage, gas central heating, double glazing throughout, off street parking and potential to extend subject to the usual planning consents. The property is being offered chain free.





Tenure : Freehold

EPC C

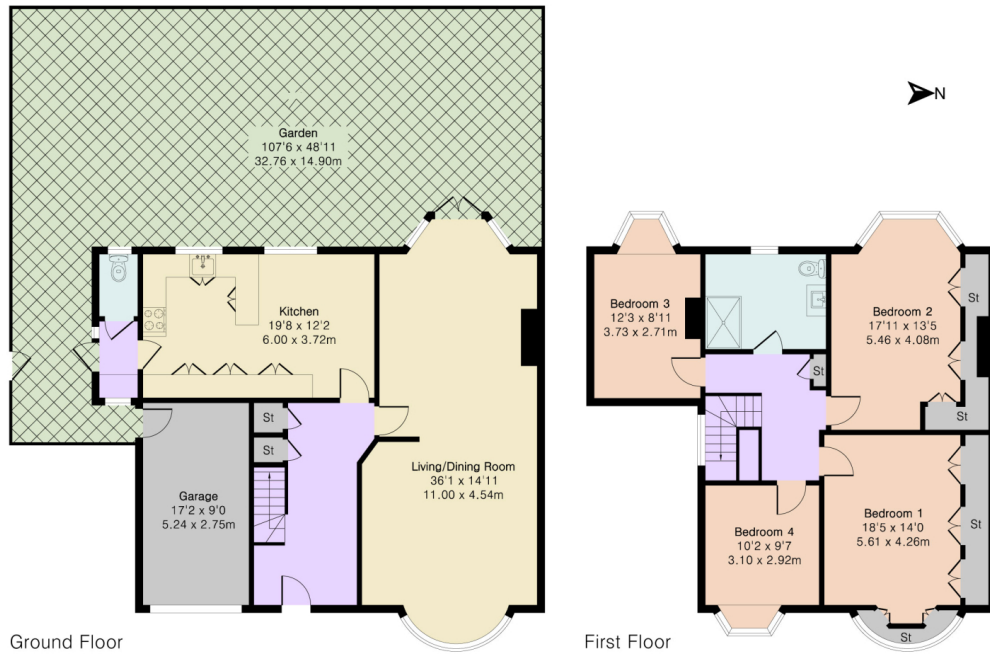
Sq.Ft : 1981



**Approximate Gross Internal Area 1981 sq ft - 184 sq m
(Including Garage)**

Ground Floor Area 1087 sq ft – 101 sq m

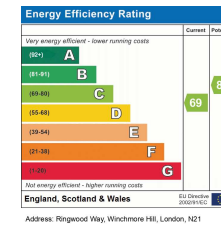
First Floor Area 894 sq ft – 83 sq m



Floor plan produced in accordance with RICS Property Measurement 2nd Edition. Although Pink Plan Ltd ensures the highest level of accuracy, measurements of doors, windows and rooms are approximate and no responsibility is taken for error, omission or misstatement. These plans are for representation purposes only and no guarantee is given on the total square footage of the property within this plan. The figure icon is for initial guidance only and should not be relied on as a basis of valuation.



Whilst every care has been taken to prepare these particulars, they are for guidance purposes only. All measurements are approximate and for general guidance purposes only. Whilst every care has been taken to ensure their accuracy, they should not be relied upon and potential buyers/ternants are advised to recheck the measurements



02083608111

www.addisontownsend.co.uk

info@addisontownsend.co.uk



ADDISON TOWNSEND
PROPERTY PROFESSIONALS

