

## Green Street, TW16

£640,000

An end of terrace three bedroom Victorian family home filled with character. This charming property has a large garden with a summer house, which is a real bonus.

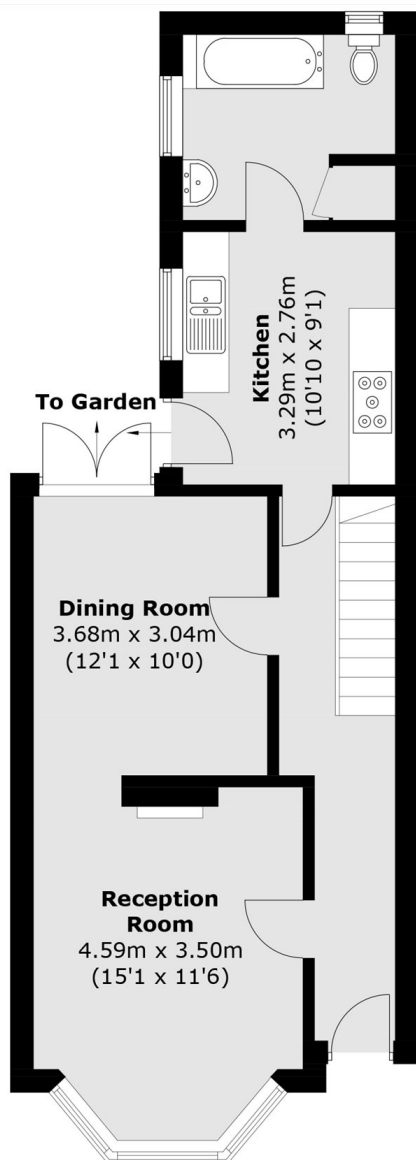
Located on Green Street opposite Sunbury Park with the River Thames at the end road the position within the Lower Sunbury Village is perfect. Sunbury Station which provides a direct service into London Waterloo is just over half a mile away.

### Features

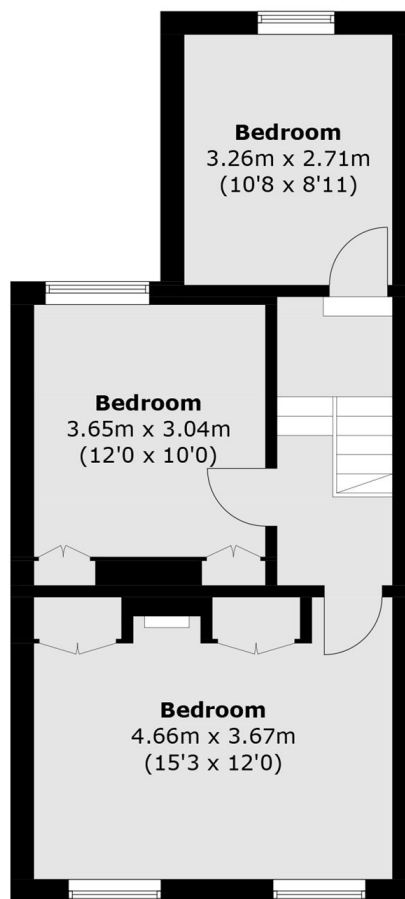
Victorian  
Three Bedrooms  
Two Reception Rooms

Opposite Sunbury Park  
Summer House

# Green Street, Sunbury-On-Thames, TW16



**Ground Floor**



**First Floor**

Total area (approx.): 97.8 sq. m (1,052.6 sq. ft)