



Kingstanding Road, Kingstanding
Birmingham, B44 8AX

Offers Over £200,000

Kingstanding

Offers Over £200,000



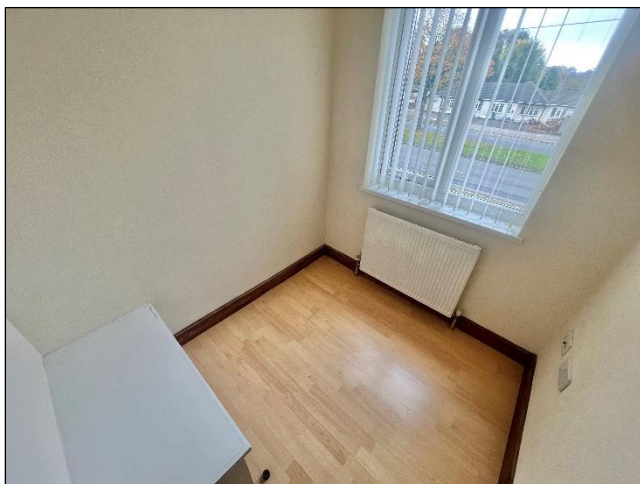
Welcoming to the market this well-presented three-bedroom semi-detached home located on Kingstanding Road. Situated close to good local schools, shops, and amenities and it is perfect for first time buyers and investors.

Approached via a block paved frontage (kerb not dropped) and entered through a secure porch. Upon entry you are welcomed by an inviting hallway giving you access to the open plan living area. The extended kitchen offers an array of wall and base units, plenty of countertop space, sink unit with side drainer and space for suitable fitted appliances. Heading upstairs you are presented with three bedrooms, two of which are good-sized double rooms and then a smaller third bedroom. The family bathroom consists of a bathtub with shower over, hand wash unit and WC.

Externally, the home has a well-sized rear garden with a paved patio, lawned area and fencing to the perimeter.

This home is offered to the market with no onward chain and viewing is highly recommended.





Agent's Note:

Every care has been taken with the preparation of these Sales Particulars but they are for general guidance only and complete accuracy cannot be guaranteed. If there is any point which is of particular importance, professional verification should be sought. The mention of any fixtures, fittings and/or appliances does not imply they are in full efficient working order as they have not been tested. All dimensions are approximate. Photographs are reproduced for general information and it cannot be inferred that any item shown is included in the sale. These Sales Particulars do not constitute a contract or part of a contract.
Came on the market: 14th October 2025

Identity Verification Fee - We are required by law to conduct anti-money laundering checks on all those buying a property as part of our due diligence. As agents acting on behalf of the seller, we are required to verify the identity of all purchasers once an offer has been accepted, subject to contract. The initial checks are carried out on our behalf by Lifetime Legal. A non-refundable administration fee of £40 + VAT (£48 including VAT) applies which covers the cost of obtaining relevant data and any manual checks and monitoring which might be required. This fee will need to be paid by you in advance of us issuing a memorandum of sale, directly to Lifetime Legal, and is non-refundable.

Property Specification

NO UPWARD CHAIN
THREE BEDROOMS
SEMI DETACHED
PERFECT FOR FIRST TIME BUYERS & BUY TO LET INVESTORS
DOUBLE GLAZED
CENTRALLY HEATED

Open Plan Living
6.59m (21'7") max into bay x 5.10m (16'9") max

Kitchen
2.60m (8'6") x 2.50m (8'2")

Bedroom 1
3.70m (12'2") max into bay x 3.20m (10'6")

Bedroom 2
3.20m (10'6") x 2.60m (8'6")

Bedroom 3
1.90m (6'3") x 1.80m (5'11")

Bathroom
1.80m (5'11") x 1.70m (5'7")

Viewer's Note:

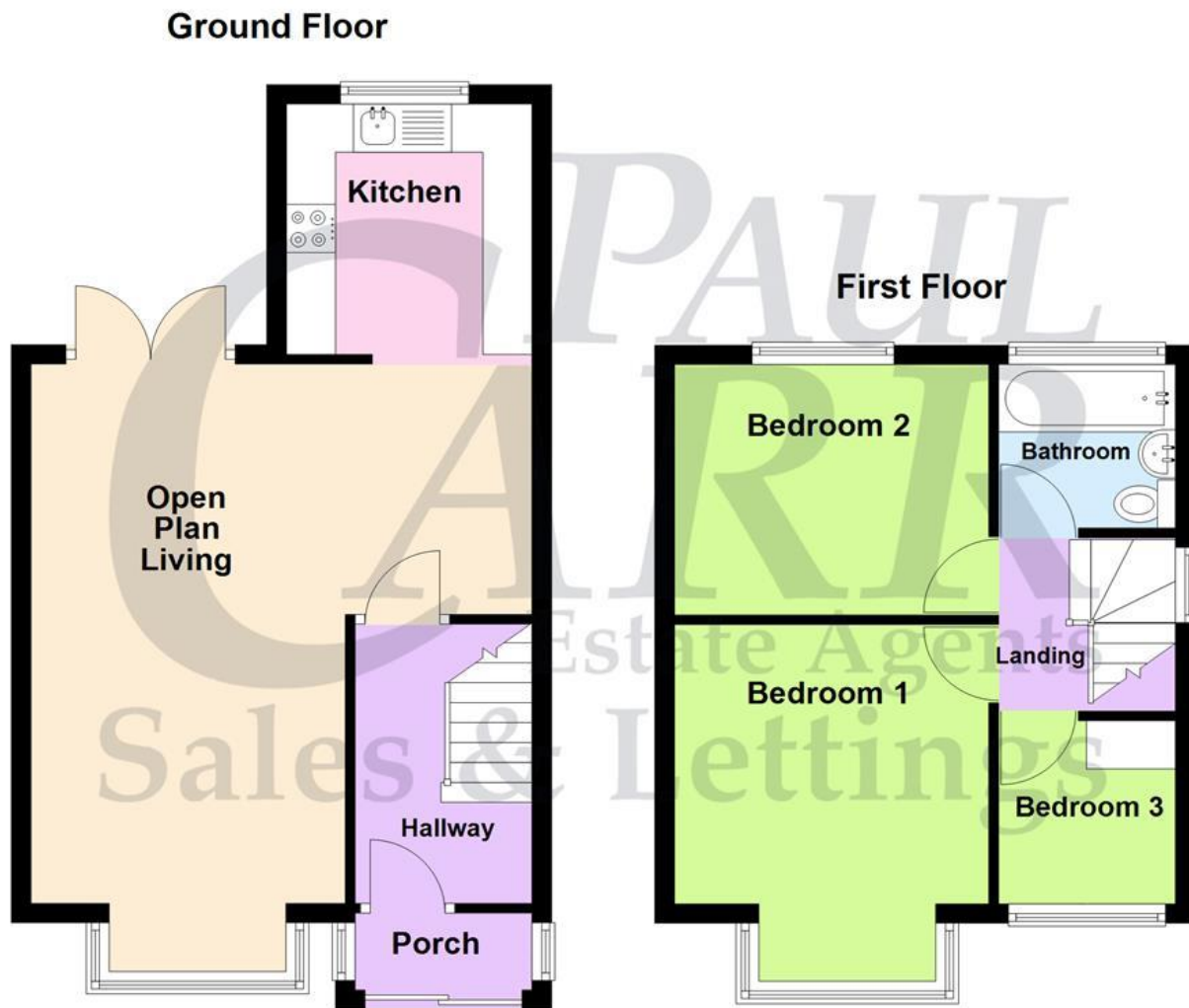
Services connected: Gas Electric Water Drainage

Council tax band: B

Tenure: Freehold

Floor Plan

This floor plan is not drawn to scale and is for illustration purposes only



Energy Efficiency Rating

Score	Energy rating	Current	Potential
92+	A		
81-91	B		85 B
69-80	C		
55-68	D	58 D	
39-54	E		
21-38	F		
1-20	G		

Map Location

