

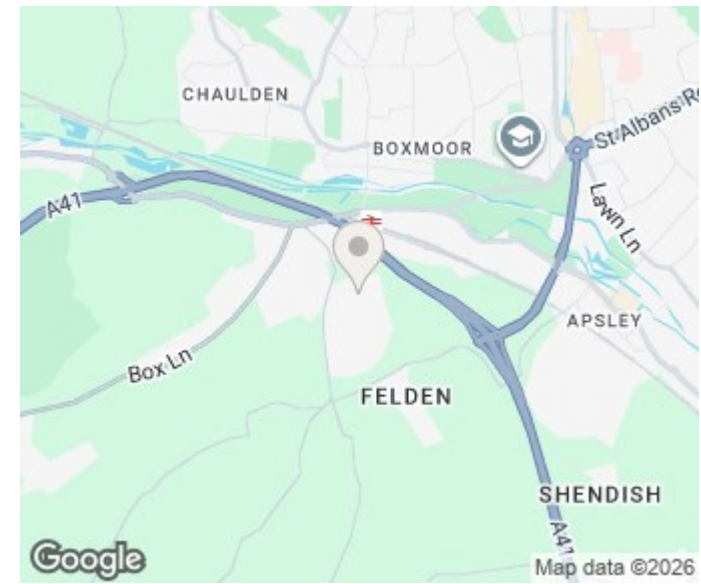
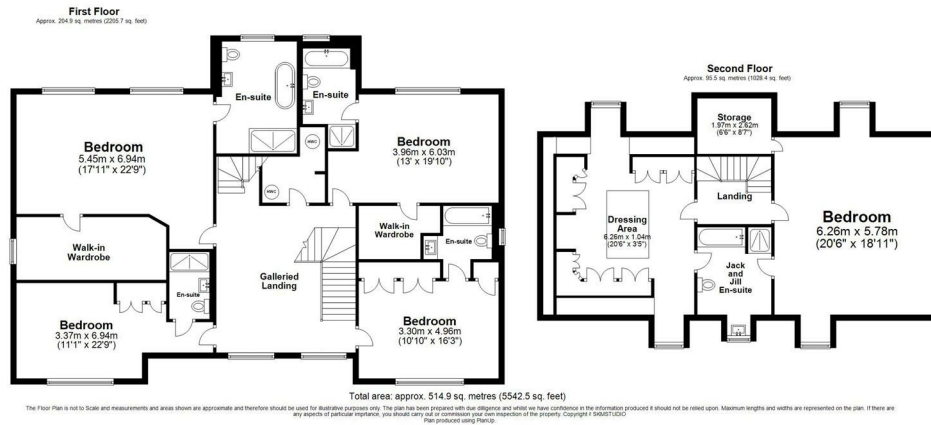
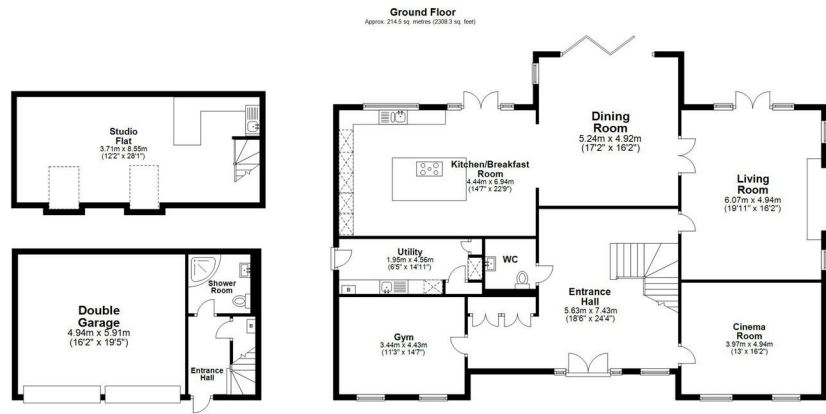


SHEETHANGER LANE HEMEL HEMPSTEAD, HP3 0BQ

£7,850 PCM

Lloyds Lettings are delighted to present this exceptional detached home, set in the highly desirable and private enclave of Felden. This rare rental opportunity offers a truly luxurious lifestyle, combining grandeur and comfort in one of the most sought-after locations.





Energy Efficiency Rating		Current	Potential
Very energy efficient - lower running costs			
(92 plus)	A		
(81-91)	B		
(69-80)	C		
(55-68)	D	76	80
(39-54)	E		
(21-38)	F		
(1-20)	G		
Not energy efficient - higher running costs			
England & Wales		EU Directive 2002/91/EC	

Agents Note: Whilst every care has been taken to prepare these particulars, they are for guidance purposes only. All measurements are approximate and are for general guidance purposes only and whilst every care has been taken to ensure their accuracy, they should not be relied upon and potential buyers/tenants are advised to recheck the measurements

Lloyds Lettings
5 Nash House Butterfly Crescent
Hemel Hempstead
HP3 9TF

01442 967146
info@lloydslettings.uk
<https://lloydslettings.uk/>

