

## Commercial Street, E1

£2,800 Per calendar month

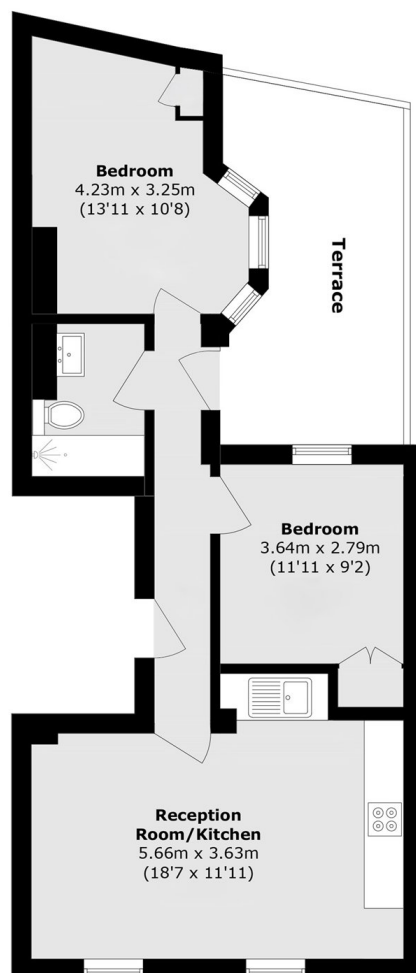
A very smart, never before rented, furnished, two double bedroom flat on Commercial Street. Ideal for a couple or two friends living together.

Commercial Street is really in the heart of the trendy and vibrant East End of London. Living between Spitalfields Market and Brick Lane the future tenant should never be bored.

### Features

- Two Double Bedrooms
- Open Plan
- Wood Flooring
- Furnished
- Spitalfeild Market
- Shoreditch

# Commercial Street, London, E1



Total area (approx.): 52.6 sq. m (566.1 sq. ft)

Terrace area (approx.): 14.3 sq. m (153.9 sq. ft)