



## **BEDFORDBURY, WC2N**

**£700,000**

A duplex apartment spanning approx. 655 sq ft, featuring a spacious principal bedroom and second double bedroom, both with air conditioning and integrated sound system. Recently renovated kitchen and bathroom complete this contemporary, high-spec home.

- Air conditioned
- Newly renovated
- Covent Garden 0.3 miles
- Quirky art gallery conversion
- Split level
- 655 sq ft



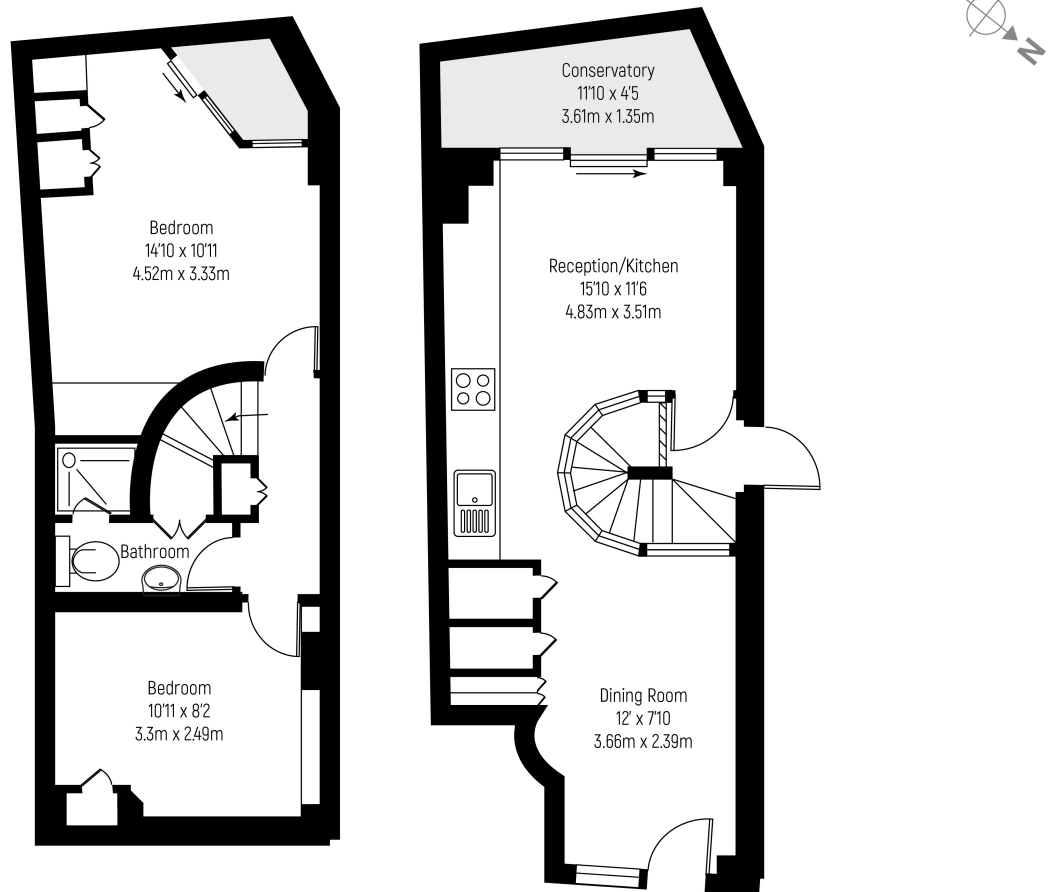
## ABOUT THE HOME

Superb transport links including the Piccadilly Line at Russell Square and national/international rail at King's Cross St Pancras. This apartment is perfect for professionals, students, or anyone seeking a stylish home in the heart of central London.





**2 bedroom duplex apartment**



**Approximate gross internal area: 655 sq ft / 60.85 sq m**

Whilst every attempt has been made to ensure the accuracy of the floorplan contained here, measurements of doors, windows, rooms and any other items are approximate. No responsibility is taken for any error, omission, or mis-statement. This plan is for illustrative purposes only and should be used as such by any prospective purchaser. The services, systems and appliances shown have not been tested and no guarantee as to their operability or efficiency can be given.  
© Copyright LiFE Residential 2021.

**LiFE RESIDENTIAL**

11 Flagstaff House, London,  
SW8 2LZ  
Sales: 020 7476 1408  
Lettings: 020 7582 7989

Energy Rating: D. We aim to make our particulars both accurate and reliable. However they are not guaranteed; nor do they form part of an offer or contract. If you require clarification on any points then please contact us, especially if you're traveling some distance to view. Please note that appliances and heating systems have not been tested and therefore no warranties can be given as to their good working order.