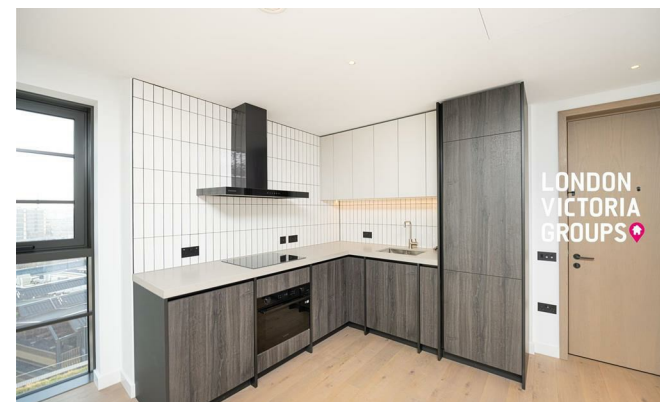
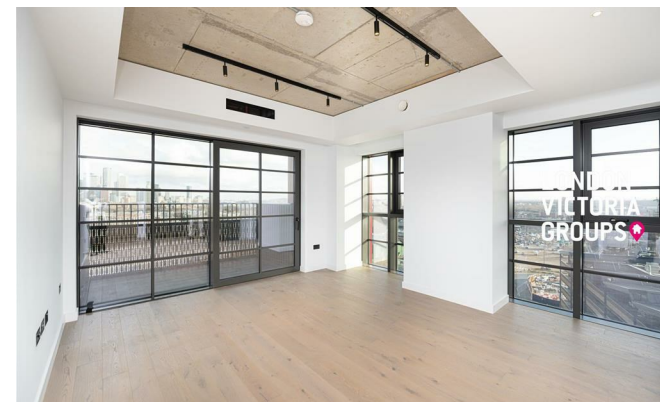


**LONDON
VICTORIA
GROUPS** 



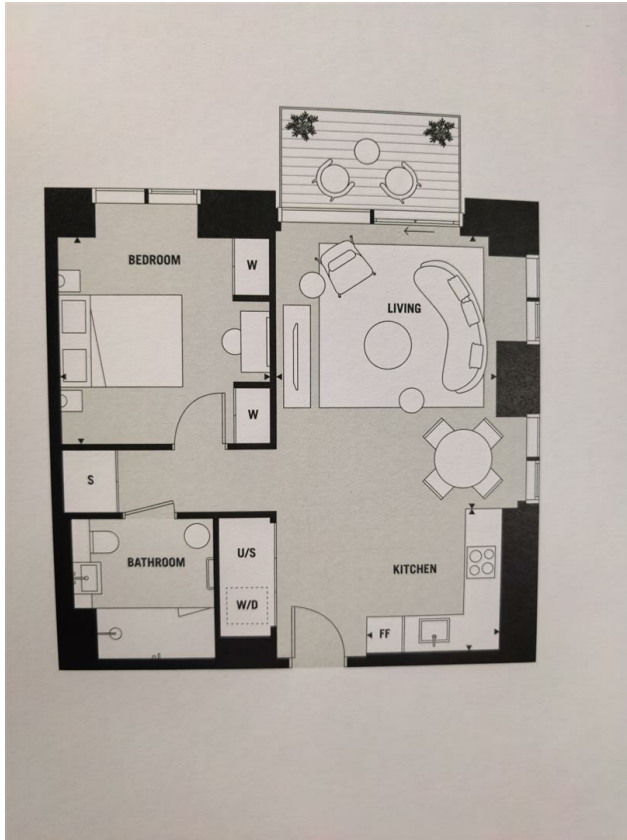
The Founding, 1 Deal Porters Way

, London SE16 2FN

- One-bedroom, one-bathroom apartment
 - 24-hour concierge service
- Secure entry system and lift access
- EPC-B
- Bright open-plan living, dining, and kitchen area
 - Residents' lounge and co-working spaces
- Moments from Canada Water Station (Jubilee Line & Overground)
 - CTB-D

£2,500 Per Month

Local Authority **Southwark**
Council Tax Band **D**
EPC Rating **B**



London Office Office
Spaces Victoria, 25 Wilton Road, Pimlico,
London, SW1V 1LW

Contact
020 3084 3094
XL@londonvictoriagroups.co.uk
www.londonvictoriagroups.co.uk

Agents Note: Whilst every care has been taken to prepare these particulars, they are for guidance purposes only. All measurements are approximate and for general guidance purposes only and whilst every care has been taken to ensure accuracy, they should not be relied upon and potential buyers/tenants are advised to recheck the measurements.

