

Buy. Sell. Rent. Let.



Humberstone Road, Grimsby



When it comes to
property it must be


lovelle



£80,000



A three bedroom mid-terraced house in Grimsby.

Key Features

- Terraced House
- Modernisation Required
- uPVC DG & GCH
- Spacious Accommodation
- Three Bedrooms
- Two Reception Rooms
- EPC rating C
- Tenure: Freehold





Lovelle offer to market this incredibly spacious three bedroom mid-terraced house, located in a popular residential area of Grimsby close to local amenities, schooling and nearby parks.

Whilst the property would benefit from modernisation, it has uPVC double glazed windows and gas central heating throughout.

Internally the accommodation comprises of an entrance hall, two reception rooms, kitchen, three bedrooms, landing and bathroom.

Externally there are gardens to both the front and rear. Viewings are highly recommended in order to appreciate the true potential on offer.

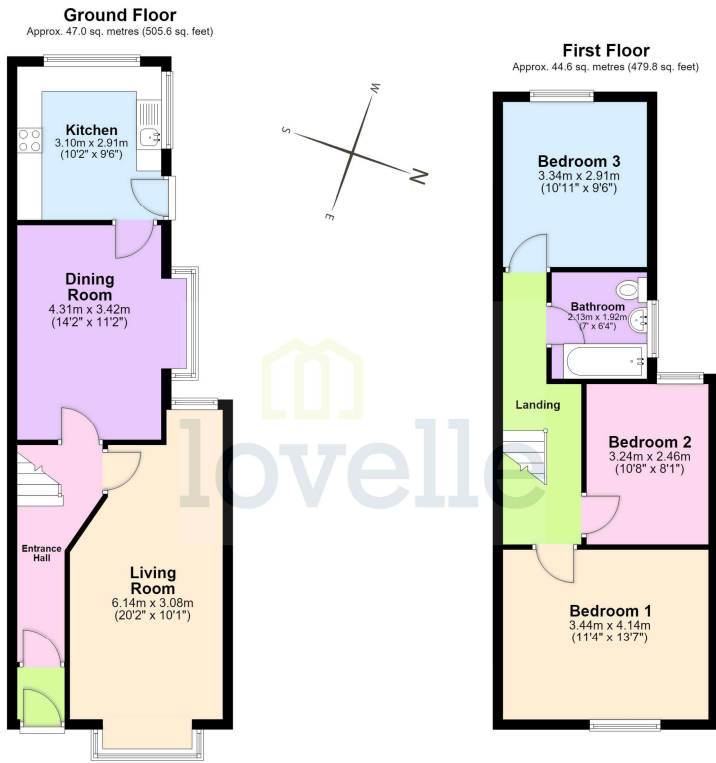
Mobile and broadband

It is advised that prospective purchasers visit [checker . ofcom . org . uk](http://checker.ofcom.org.uk) in order to review available wifi speeds and mobile connectivity at the property.

Disclaimer

We endeavour to make our sales particulars accurate and reliable, however, they do not constitute or form part of an offer or any contract and none is to be relied upon as statements of representation or fact. Any services, systems and appliances listed in this specification have not been tested by us and no guarantee as to their operating ability or efficiency is given. All measurements have been taken as a guide to prospective buyers only, and are not precise. If you require clarification or further information on any points, please contact us, especially if you are travelling some distance to view.





Total area: approx. 91.5 sq. metres (985.4 sq. feet)

The provided floor plan is intended for general informational purposes only and may not accurately represent the exact dimensions, layout, or features of the property. The floor plan should not be relied upon for making decisions about purchasing, renting, or modifying the property. Actual measurements and features may vary. It is recommended that interested parties conduct a physical inspection of the property to verify the accuracy of the floor plan and obtain specific information about the property's condition, amenities, and any other relevant details. Plan produced using PlanUp.

When it comes to **property**
it must be


lovelle

01472 251918

grimsby@lovelle.co.uk

