

2 Lily Close

Pinner • • HA5 3JT

Offers In Excess Of: £375,000



coopers
est 1986

2 Lily Close

Pinner • • HA5 3JT

A well-presented two-bedroom, two-bathroom second-floor apartment set within a modern development, conveniently located close to local shops, excellent transport links, and a number of highly regarded schools. The property benefits from well-kept communal grounds, allocated parking, and the added advantage of no onward chain. This home is perfect for investment purposes, first-time buyers, or families alike.

Pinner is close by, offering a wide selection of shops, restaurants, cafés and supermarkets. Commuters benefit from local bus routes and the Metropolitan Line at Pinner Station, providing regular connections into Central London. The area is also well served by highly rated primary and secondary schools, including Pinner Wood Primary School within walking distance, as well as nearby parks, playgrounds and leisure facilities.

Second Floor Flat

Open Plan Kitchen / Living

Two Bathroom

Allocated Parking

Two Double Bedrooms

No Onward Chain

Rental Estimate: £1,900 pcm

Private Balcony

Pinner Wood Primary Catchment

Approx Area: 807 sq ft

These particulars are intended as a guide and must not be relied upon as statements of fact. Your attention is drawn to the Important Notice on the last page.

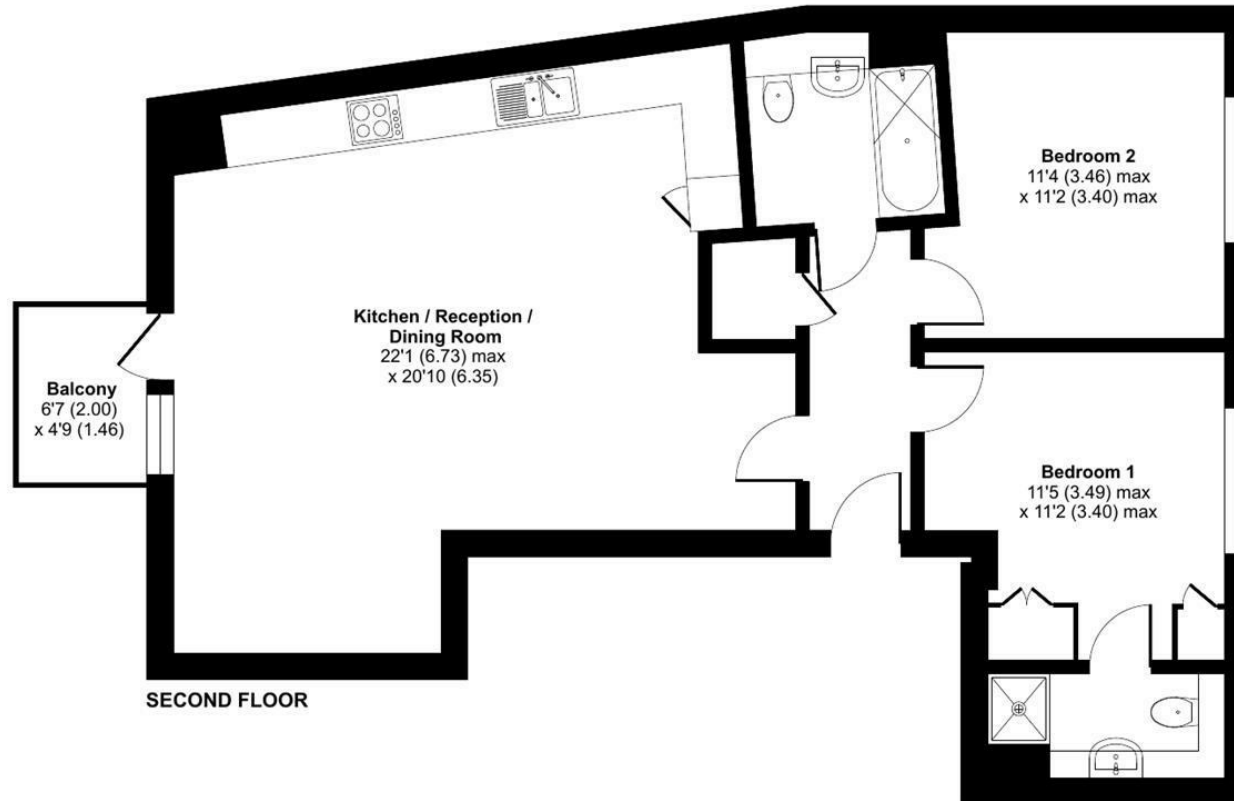




Lily Close, Pinner, HA5

Approximate Area = 807 sq ft / 74.9 sq m

For identification only - Not to scale



Floor plan produced in accordance with RICS Property Measurement 2nd Edition, Incorporating International Property Measurement Standards (IPMS2 Residential). © n/checom 2026. Produced for Coopers. REF: 1451920

coopers
est 1986

coopers
est 1986

**18 Bridge Street, Pinner,
Middlesex, HA5 3JF**
pinner@coopersresidential.co.uk

CoopersResidential.co.uk

Energy Efficiency Rating	
Current	Potential
Very energy efficient - lower running costs	
A	A
B	B
C	C
D	D
E	E
F	F
G	G
Not energy efficient - higher running costs	
England & Wales	
EPC Directive 2002/91/EC	

Important Notice: These particulars, whilst believed to be accurate are set out as a general outline only for guidance and do not constitute any part of an offer or contract. Intending purchasers should not rely on them as statements or representation of fact, but must satisfy themselves by inspection or otherwise has the authority to make or give any representation or warranty in respect of the property.