



2 Bartholomew Green

Markyate, AL3 8RX

A well presented end of terrace house, which was constructed in 2004 forming part of a private close. The property benefits from having a beautifully refitted kitchen, a main bedroom with en suite shower room and off street parking

Guide price £495,000

2 Bartholomew Green

Markyate, AL3 8RX



- A very appealing end of terrace house with a lovely interior
- Main bedroom with en suite shower room
- Double glazed windows and doors (some with plantation shutters)
- Boarded loft with ladder and light
- Bay fronted lounge/diner and cloakroom wc
- 2 further bedrooms and main bathroom
- The village offers a range of amenities such as local shops, Post Office, pub/restaurants, gym, Doctors Surgery & Pharmacy, as well as good schooling nearby.
- Tastefully fitted kitchen/diner which incorporates a dishwasher, oven and hob
- Off street parking for 2 cars
- Harpenden centre 6.6 miles, St Albans City Centre 8.7 miles, Luton Parkway Station 6.7 miles

GROUND FLOOR

Lobby

Cloakroom WC

Lounge/Diner

19'8 x 17'8 max (5.99m x 5.38m max)

Kitchen/Breakfast Room

15'2 x 9'7 (4.62m x 2.92m)

FIRST FLOOR

Landing

Main Bedroom

15'1 max x 11'4 (4.60m max x 3.45m)

En Suite Shower Room

Bedroom Two

11'4 x 8'7 (3.45m x 2.62m)

Bedroom Three

9' x 6'4 (2.74m x 1.93m)

Bathroom

EXTERNALLY

Frontage

Rear Garden

Off Street Parking (2 cars)

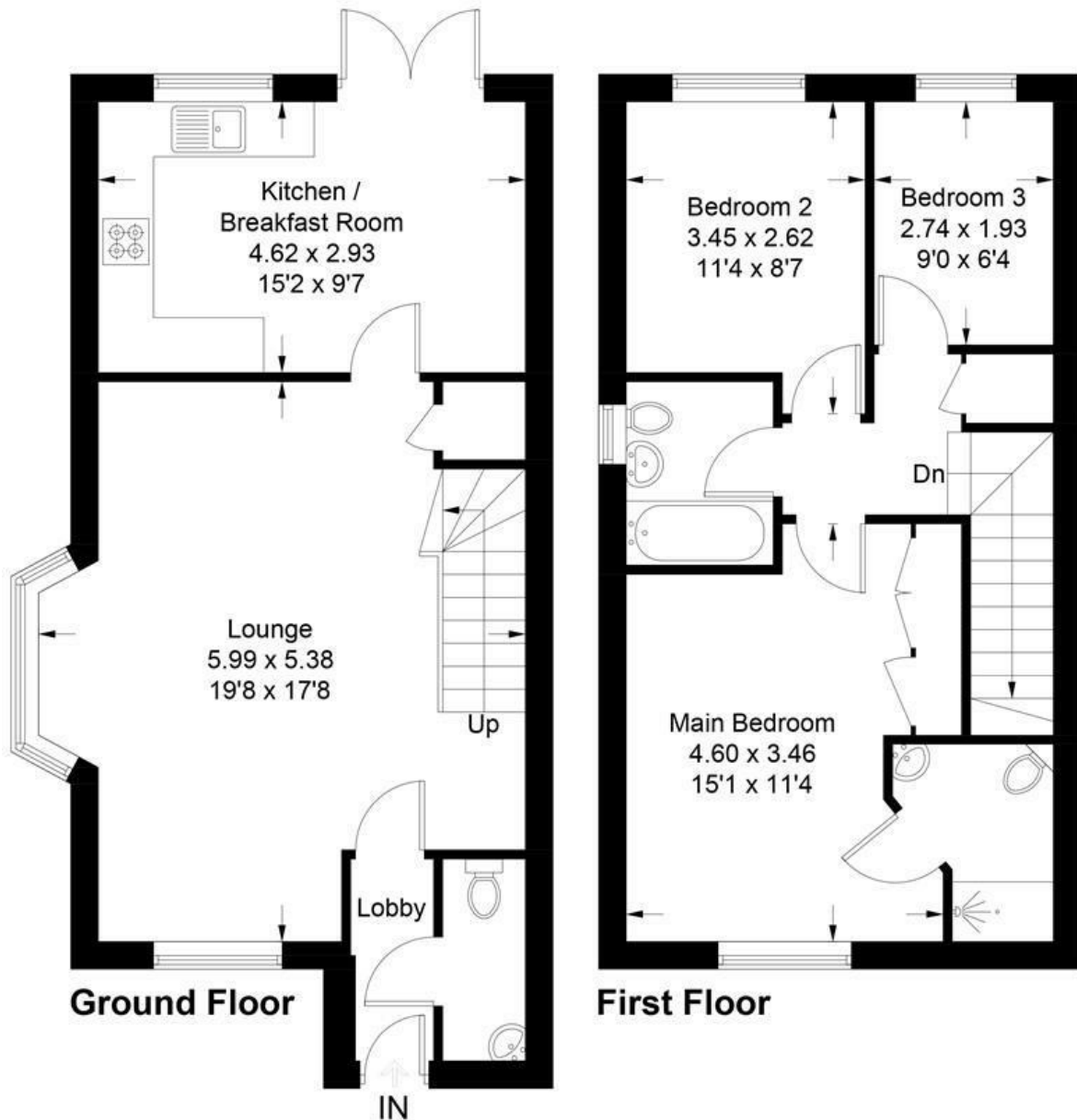


Directions



Bartholemew Green

Approximate Gross Internal Area = 86.0 sq m / 926 sq ft



This plan is for layout guidance only. Not drawn to scale unless stated. Windows and door openings are approximate. Whilst every care is taken in the preparation of this plan, please check all dimensions, shapes and compass bearings before making any decisions reliant upon them. (ID1300223)

These particulars, whilst believed to be accurate are set out as a general outline only for guidance and do not constitute any part of an offer or contract. Intending purchasers should not rely on them as statements of representation of fact, but must satisfy themselves by inspection or otherwise as to their accuracy. No person in this firm's employment has the authority to make or give any representation or warranty in respect of the property.

