



Chapman Avenue, Peterborough
Offers in Excess of **£350,000** **Freehold**

**Sharman
Quinney**

Key Features



- Four Well-proportioned Bedrooms
- Two Modern Bathrooms
- Two Spacious Reception Rooms
- Private Driveway
- Enclosed Rear Garden

Situated in a popular residential location, this well-presented four-bedroom townhouse offers spacious and versatile accommodation set over multiple floors, making it an ideal family home.

The ground floor features two generous reception rooms, providing flexible living and entertaining space, alongside a well-appointed kitchen with ample storage and worktop space. The layout is perfectly suited for both everyday family life and hosting guests.

Across the upper floors, the property boasts four well-proportioned bedrooms, including a principal bedroom served by a modern family bathroom. A second bathroom adds further convenience for growing families or visiting guests.



Externally, the home benefits from a private driveway offering off-road parking and a well-maintained rear garden, ideal for outdoor dining, relaxing, or children's play.

This attractive townhouse combines space, comfort, and practicality in a sought-after area, making it a fantastic opportunity for families and professionals alike.

Entrance Hall

W/C

Kitchen Diner

First Floor Landing

Living Room

Master Bedroom

En-Suite To Master Bedroom

Second Floor Landing

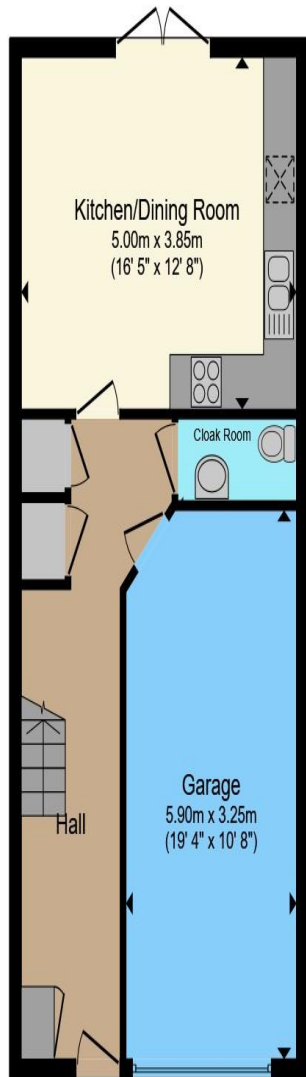
Bedroom Two

Bedroom Three

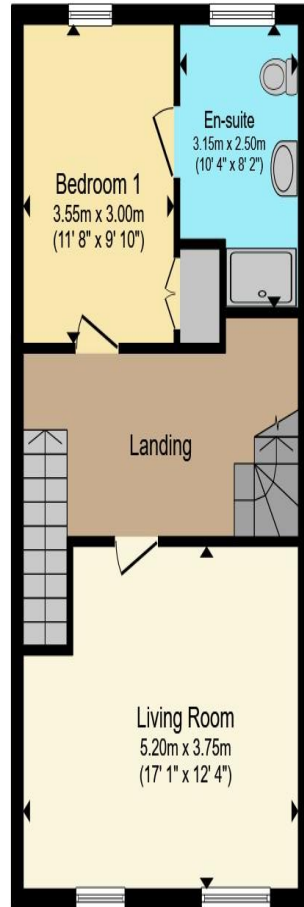
Bathroom

Bedroom Four

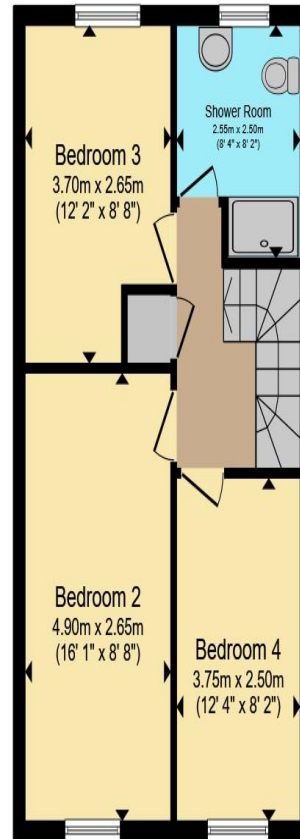




Ground Floor



First Floor



Second Floor

Total floor area 145.5 m² (1,566 sq.ft.) approx

This floor plan is for illustrative purposes only. It is not drawn to scale. Any measurements, floor areas (including any total floor area), openings and orientation are approximate. No details are guaranteed, they cannot be relied upon for any purpose and they do not form part of any agreement. No liability is taken for any error, omission or misstatement. A party must rely upon its own inspection(s). Powered by www.propertybox.io

**Sharman
Quinney**

Garage

To view this property call Sharman Quinney on:
01733 897896

Selling your property?

Contact us to arrange a **FREE** home valuation.

 01733 897896

 70 Albert Place, PETERBOROUGH,
Cambridgeshire, PE1 1DD

 peterborough@sharmanquinney.co.uk

 www.sharmanquinney.co.uk



 SCAN ME



Sharman Quinney Holdings Limited is registered in England and Wales under company number 4174227, Registered Office is Cumbria House, 16-20 Hockliffe Street, Leighton Buzzard, Bedfordshire, LU7 1GN. VAT Registration Number is 500 2481 05.

1: These particulars do not constitute part or all of an offer or contract. 2: The measurements indicated are supplied for guidance only and as such must be considered incorrect. 3: Potential buyers are advised to recheck the measurements before committing to any expense. 4: Sharman Quinney has not tested any apparatus, equipment, fixtures, fittings or services and it is the buyers interests to check the working condition of any appliances. 5: Sharman Quinney has not sought to verify the legal title of the property and buyers must obtain verification from their legal representative. 6: Intending purchasers will be asked to produce identification documentation at a later stage and we would ask your co-operation in order that there will be no delay in agreeing the sale. Ref: PTB207518 - 0006

