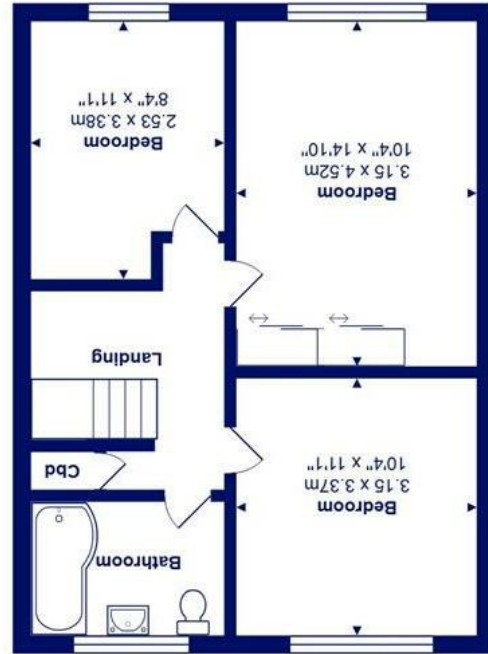




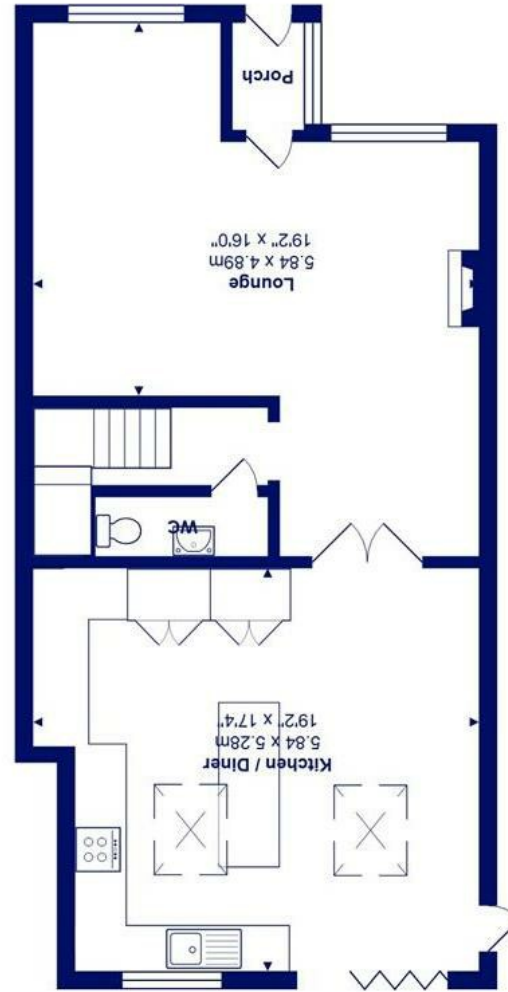
All measurements are approximate and for display purposes only.  
Total Area: 114.4 m<sup>2</sup> ... 1231 ft<sup>2</sup>



First Floor



Ground Floor



3 Lysander Close, Mudeford, BH23 4ST

£495,000

**Mitchells**  
1963 — TODAY

An extended three bedroom semi-detached family home that has fully modernised by the current vendors, featuring three good sized bedrooms, vaulted kitchen/family room with Velux windows flooding the room with light, separate large sitting room, ground floor wc and a good size west facing garden. Located just a mile away to the award winning beaches at Steamer Point.

- Three good sized bedrooms, master with fitted wardrobes
- Fully tiled re-fitted family bathroom
- Beautiful large vaulted rear extension creating an impressive kitchen/dining room with island breakfast bar, some integrated appliances and quality Quartz worktops
- Large sitting room with space for dining if required
- Ground floor wc & entrance porch
- Gas fired central heating and Upvc double glazed windows
- Off-road parking for three cars
- Generous west facing garden with area of patio ideal for entertaining, garden shed
- Situated in this superb location just a short stroll to the local sandy Blue Flag beaches at Steamer Point and Avon
- Highcliffe school catchment

EPC Rating Band: C  
Council Tax Band: D  
Freehold

Successful buyers will be required to complete online identity checks provided by Lifetime Legal. The cost of these checks is £45 inc. VAT per purchase which is paid in advance, directly to Lifetime Legal. This check verifies your identity in line with our obligations as stipulated by our regulatory body, HMRC

