



## Fulham Road, SW10

£2,600 Per week

A third floor flat within a modern development with portage, underground parking and a lift. This property is in good condition throughout with wooden floors in the open plan reception.

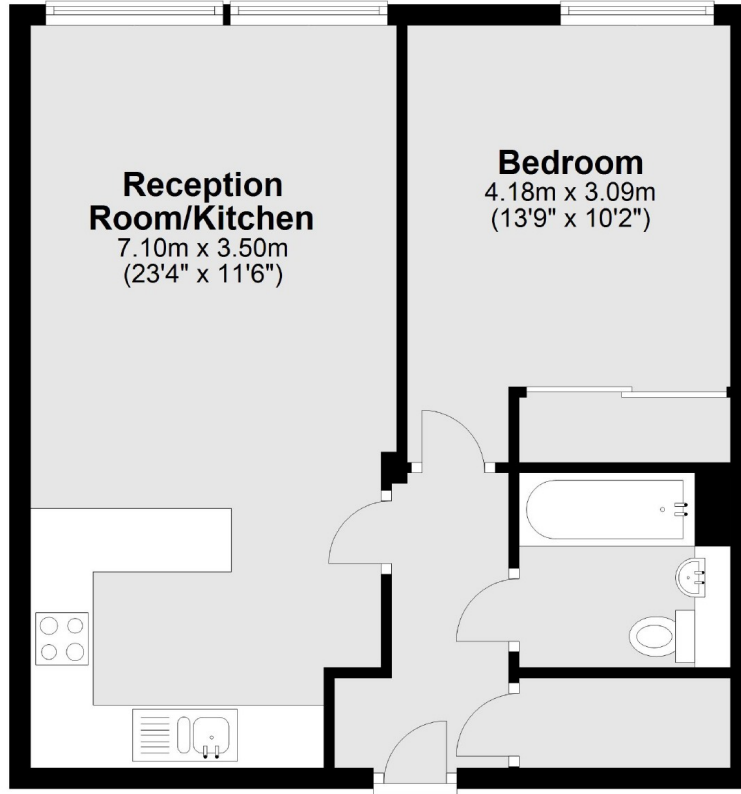
Ellesmere Court apartments are ideally positioned close to 'The Beach' and are within close proximity to plenty of local restaurants, shops and cafés.

### Features

- One Double Bedroom
- Open Plan Kitchen
- Third Floor With Lift
- Wood Floors
- Underground Parking Included
- Onsite Porter

**Fulham Road,  
London, SW10**

**Third Floor**



Total area: approx. 47.5 sq. metres (511.3 sq. feet)