



Cleland House

32 John Islip Street, Westminster, SW1P 4FF

Asking Price £2,280,000



3



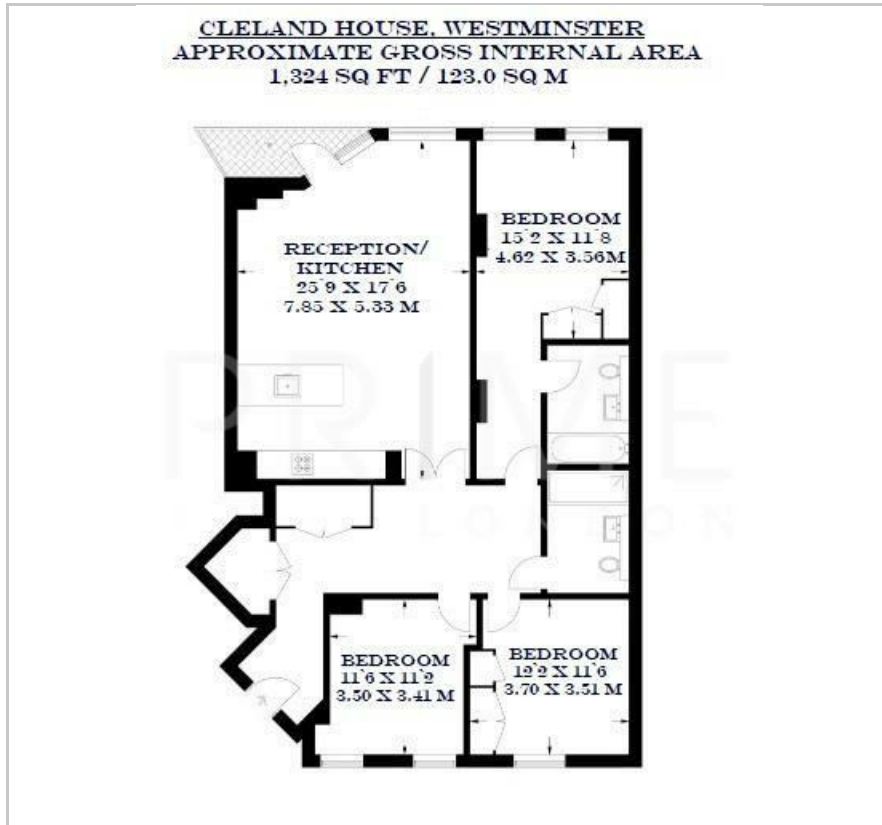
2



1



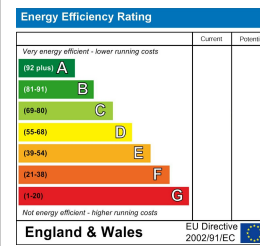
Floor Plan



Area Map



Energy Efficiency Graph



Viewing

By appointment. Contact us on 0207 052 1075 if you wish to arrange a viewing appointment for this property, or require further information.

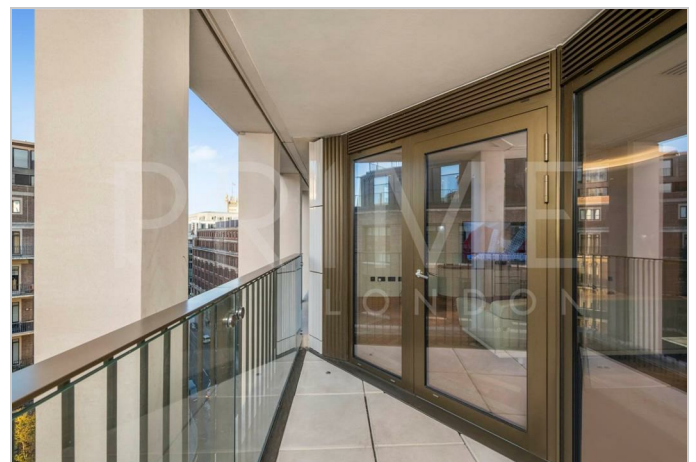
- Modern three bedroom ▪ 1,324 sq ft (123.0 sqm) apartment
- Secure Parking ▪ Walking distance to the Houses of Parliament
- Residents' leisure suite, ▪ 24 hour concierge including gym and pool

This amazing and modern three bedroom apartment in the fabulous Cleland House development, featuring 24 hour concierge, gym, swimming pool, landscaped gardens and meeting rooms, is available for chain free sale through Prime London. The property is also offered with a secure parking.

The spacious 1,324 sq ft (123.0 sqm) property comprises a large open plan reception, fully fitted kitchen, double bedroom with ample storage and en suite, two further double bedrooms, and beautifully finished bathroom. The property also benefits from comfort cooling and wooden flooring.

Close to the Division Bell area surrounding the Houses of Parliament, Cleland House has been conceived by award-winning architects, as a building to accentuate the grand surroundings of its remarkable Westminster location.

Positioned to the south of St James Park and east of Victoria, the area includes some of London's most iconic landmarks, yet retains a surprisingly village like atmosphere. The property is within reach of the many amenities, restaurants and shops of Victoria, Westminster and St James's.



These particulars, whilst believed to be accurate are set out as a general outline only for guidance and do not constitute any part of an offer or contract. Intending purchasers should not rely on them as statements of representation of fact, but must satisfy themselves by inspection or otherwise as to their accuracy. No person in this firm's employment has the authority to make or give any representation or warranty in respect of the property.