



Connells

Ords Howfield Lane
Chartham Hatch Canterbury



Property Description

Viewings are welcomed on this very well presented and very modern, two bedroom end of terrace home in a sought after village location on the edge of Canterbury.

The home allows for easy access to main road network leading to Canterbury and Ashford. The property would make an ideal first time buy, ready to move in to and comprises a light living room, open access to modern kitchen and a separate utility room.

To the first floor you will find two bedrooms and shower room with matching suite.

The property also benefits from a good size rear garden, mostly laid to lawn with fencing to both sides and easy on road parking to the road.

Lounge Kitchen Room

25' 5" Max x 12' Max (7.75m Max x 3.66m Max)

Utility Room

4' x 2' 9" (1.22m x 0.84m)

Bedroom One

12' x 9' 11" (3.66m x 3.02m)

Bedroom Two

12' x 7' (3.66m x 2.13m)

Shower Room

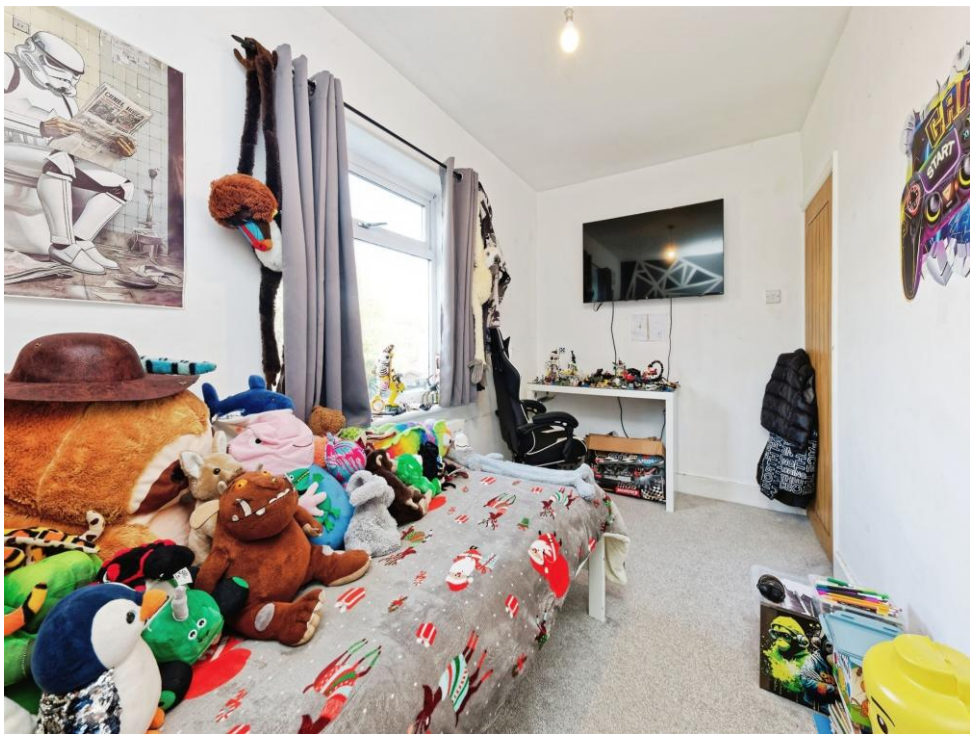
Shower cubicle, WC and wash hand basin.

Outside

Generous garden space, mostly laid to lawn with fenced borders



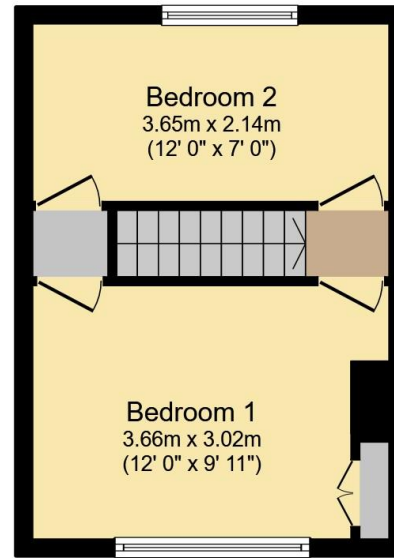








Ground Floor



First Floor

Total floor area 53.7 m² (578 sq.ft.) approx

This floor plan is for illustrative purposes only. It is not drawn to scale. Any measurements, floor areas (including any total floor area), openings and orientation are approximate. No details are guaranteed, they cannot be relied upon for any purpose and they do not form part of any agreement. No liability is taken for any error, omission or misstatement. A party must rely upon its own inspection(s). Powered by www.propertybox.io



To view this property please contact Connells on

T 01227 764 720
E canterbury@connells.co.uk

29-30 Watling Street
 CANTERBURY CT1 2UD

EPC Rating: D Council Tax Band: B

Tenure: Freehold

view this property online connells.co.uk/Property/CBY406831



1. MONEY LAUNDERING REGULATIONS Intending purchasers will be asked to produce identification documentation at a later stage and we would ask for your co-operation in order that there will be no delay in agreeing the sale. 2. These particulars do not constitute part or all of an offer or contract. 3. The measurements indicated are supplied for guidance only and as such must be considered incorrect. Potential buyers are advised to recheck measurements before committing to any expense. 4. We have not tested any apparatus, equipment, fixtures, fittings or services and it is in the buyers interest to check the working condition of any appliances.

Connells Residential is registered in England and Wales under company number 1489613, Registered Office is Cumbria House, 16-20 Hockliffe Street, Leighton Buzzard, Bedfordshire, LU7 1GN. VAT Registration Number is 500 2481 05.

See all our properties at www.connells.co.uk | www.rightmove.co.uk | www.zoopla.co.uk

Property Ref: CBY406831 - 0005