



7 Bramble Drive, Maidenhead SL6 3NX

welcome to

7 Bramble Drive, Maidenhead

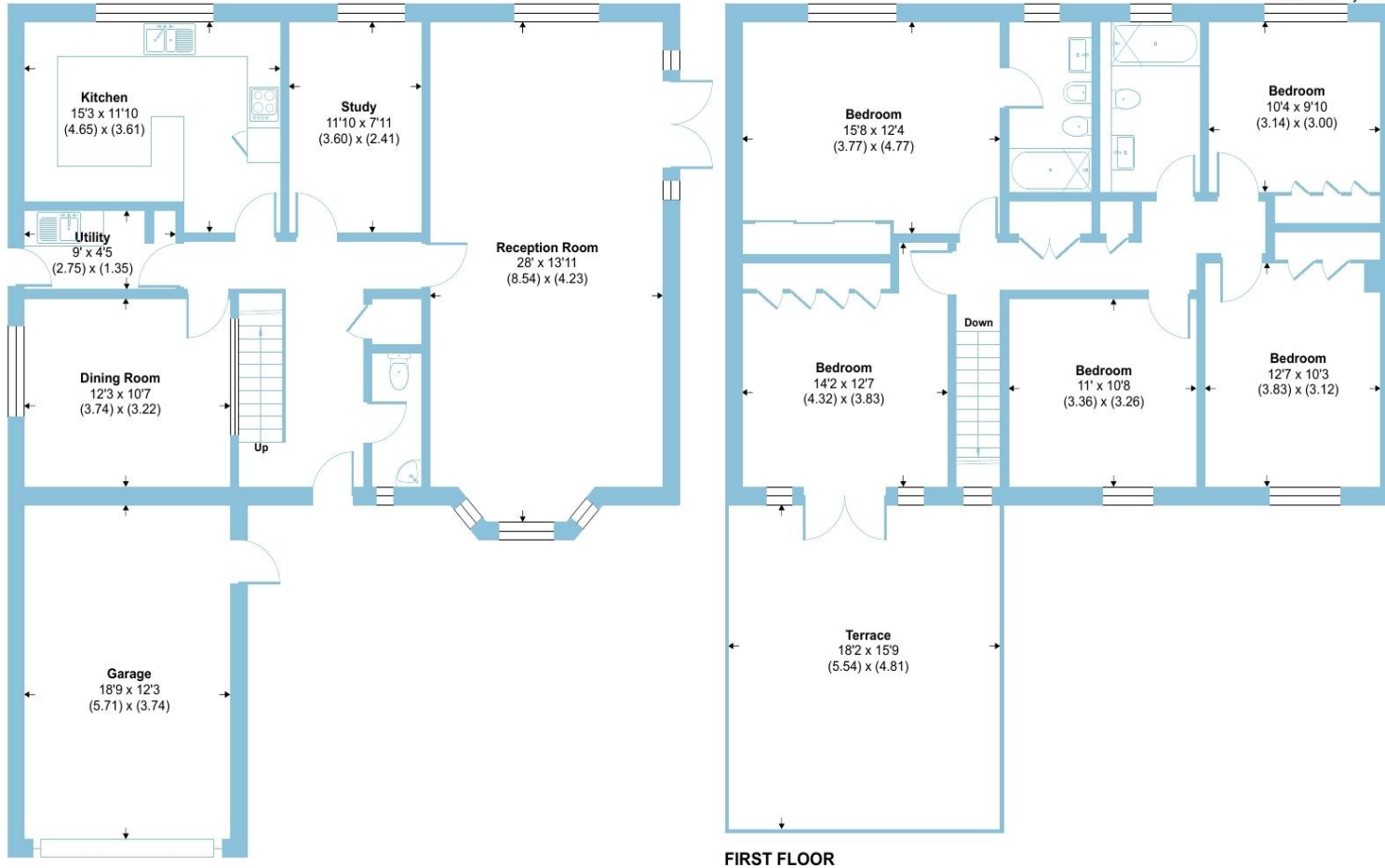
Sizeable five bedroom, two bathroom, three reception room detached house on a large plot in a popular cul-de-sac - updating required, ample potential, no chain.



Bramble Drive, Maidenhead, SL6

Approximate Area = 1994 sq ft / 185.2 sq m
 Garage = 230 sq ft / 21.3 sq m
 Total = 2224 sq ft / 206.5 sq m

For identification only - Not to scale



GROUND FLOOR

FIRST FLOOR

Floor plan produced in accordance with RICS Property Measurement 2nd Edition, incorporating International Property Measurement Standards (IPMS2 Residential). © nichecom 2026. Produced for Barnard Marcus. REF: 1447084



Set on a generous corner plot within this highly sought-after cul-de-sac, this spacious five-bedroom, two-bathroom detached family home offers well-balanced accommodation in excess of 2,200 sq ft and presents an excellent opportunity for buyers seeking space, privacy and future potential.

The ground floor is approached via a welcoming and spacious hallway, leading through to a superb 28' living room with direct access onto the rear garden, ideal for both family living and entertaining. Additional reception space is provided by a separate dining room and a third reception room, perfectly suited as a home office or playroom. Completing the ground floor is a cloakroom, a well-proportioned 15' kitchen/breakfast room and a separate utility room.

Upstairs, the principal bedroom is a generous 15' double featuring fitted wardrobes and a private en-suite bathroom. The remaining four bedrooms are all doubles, one of which enjoys access to a roof terrace, and are served by a family bathroom.

Externally, the vast rear garden offers a high degree of privacy and, thanks to the substantial plot size, provides significant scope for extension or the addition of an outbuilding (subject to the usual consents). The garden features a patio terrace, a large lawned area and a variety of established flower, shrub and tree borders. To the front, there is driveway parking leading to an 18' garage.

The property requires modernisation and is offered to the market with no onward chain.

welcome to

7 Bramble Drive, Maidenhead

- SPACIOUS DETACHED FAMILY HOME
- LARGE PLOT - POTENTIAL FOR EXTENSIONS (STP)
- OWN DRIVE TO LARGE GARAGE
- FIVE BEDROOMS
- TWO BATHROOMS
- EASY ACCESS TO TOWN CENTRE & STATION
- MODERNISATION REQUIRED
- NO ONWARD CHAIN

Tenure: Freehold EPC Rating: C

Council Tax Band: G

£1,200,000



Please note the marker reflects the postcode not the actual property

check out more properties at rogerplatt.co.uk



Property Ref:
MHD123726 - 0001

1. MONEY LAUNDERING REGULATIONS Intending purchasers will be asked to produce identification documentation at a later stage and we would ask for your co-operation in order that there is no delay in agreeing the sale. 2. These particulars do not constitute part or all of an offer or contract. 3. The measurements indicated are supplied for guidance only and as such must be considered incorrect. Potential buyers are advised to recheck measurements before committing to any expense. 4. We have not tested any apparatus, equipment, fixtures or services and it is in the buyers interest to check the working condition of any appliances. 5. Where an EPC, or a Home Report (Scotland only) is held for this property, it is available for inspection at the branch by appointment. If you require a printed version of a Home Report, you will need to pay a reasonable production charge reflecting printing and other costs. 6. We are not able to offer an opinion either written or verbal on the content of these reports and this must be obtained from your legal representative. 7. Whilst we take care in preparing these reports, a buyer should ensure that his/her legal representative confirms as soon as possible all matters relating to title including the extent and boundaries of the property and other important matters before exchange of contracts.

Roger Platt is a trading name of Sequence (UK) Limited which is registered in England and Wales under company number 4268443, Registered Office is Cumbria House, 16-20 Hockliffe Street, Leighton Buzzard, Bedfordshire, LU7 1GN. VAT Registration Number is 500 2481 05.


roger platt



01628 773333



Maidenhead@rogerplatt.co.uk



25-29 Queen Street, MAIDENHEAD, Berkshire,
SL6 1NB



rogerplatt.co.uk