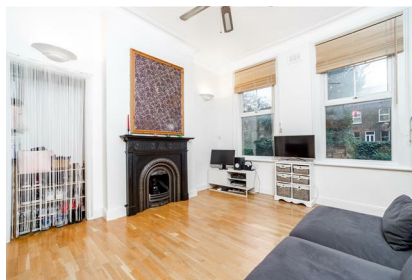


Parkheath

Sold on Service

Dennington Park Road NW6

£1,850 PCM (£427 per week) - Camden Band D



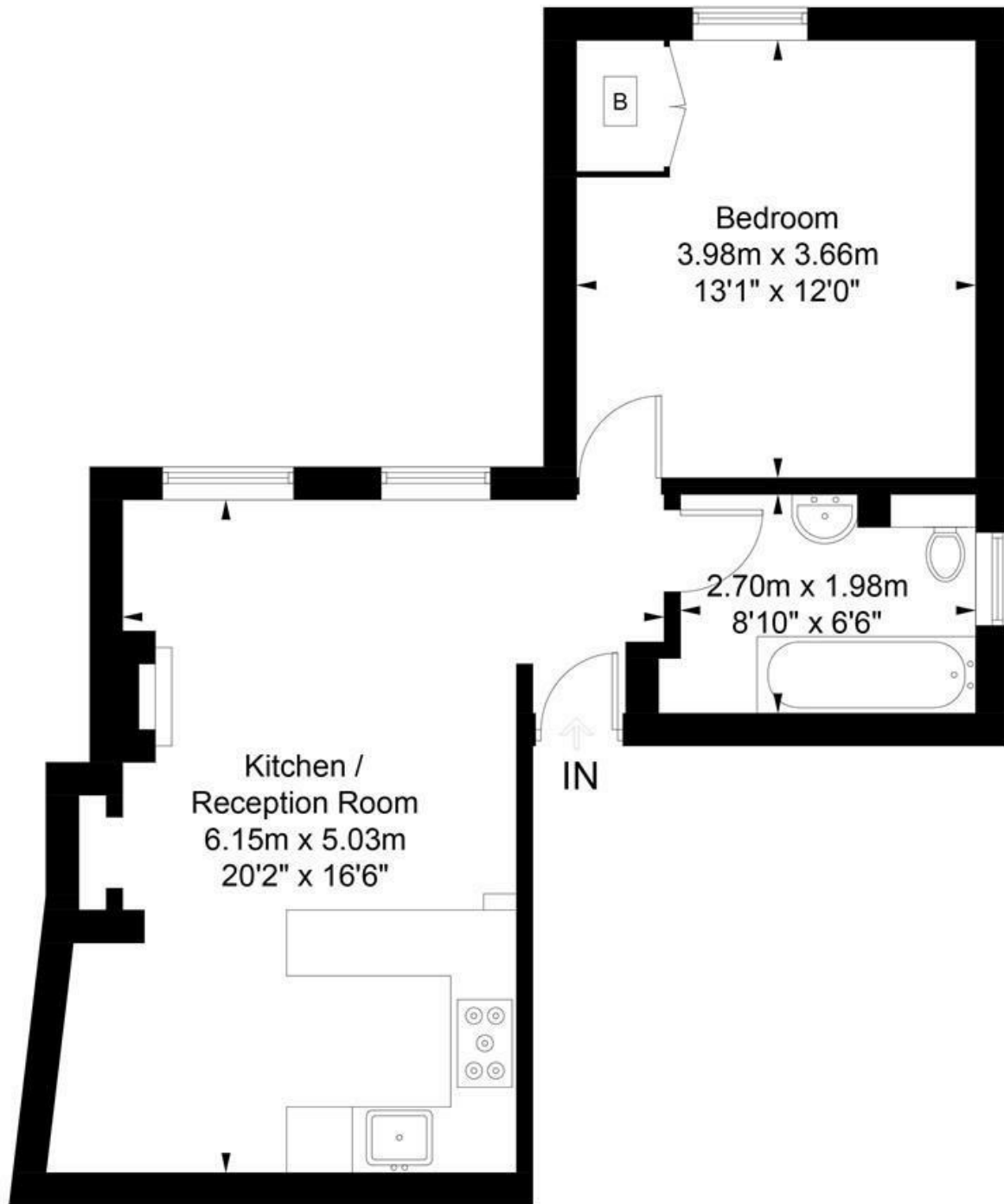
Central West Hampstead location
High ceilings and wood floors
Open plan kitchen/reception room
Double glazing

2 minute walk to West End Lane
1 bedroom raised ground converted flat
Double bedroom
EPC: Rating D, Council Tax: Camden band D

West Hampstead Office 020 7794 7111

Dennington Park Road

Approximate Gross Internal Area = 47.5 sq m / 511 sq ft



Raised Ground Floor

Illustration for identification purposes only, measurements are approximate,
not to scale. FloorplansUsketch.com © 2017 (ID399481)
ELLIE CLAIRE PHOTOGRAPHY LTD

The particulars do not constitute part of an offer or contract. The particulars, including text, photographs and plans, are for the guidance only of prospective purchasers/tenants and must not be relied upon as statements of fact. The descriptions provided therein represent the opinion of the author and whilst given in good faith should not be construed as statements of fact. Nothing in these particulars shall be deemed a statement that the property is in good condition or otherwise or that any services or facilities are in good working order. All measurements are approximate