



smarthomes

Sissinghurst Court, Main Street

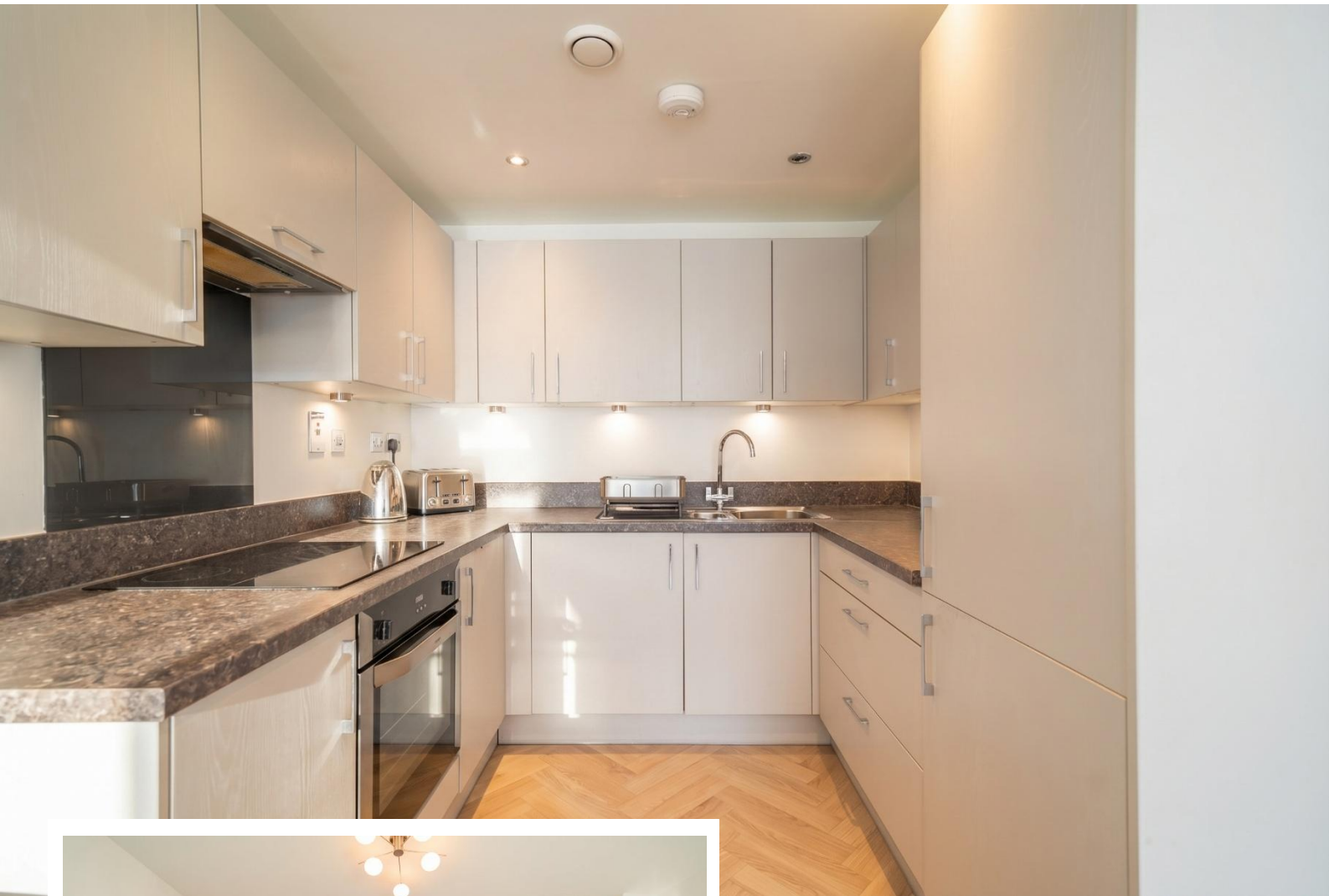
Dickens Heath, Solihull

- A Modern One Bedroom First Floor Apartment
- Open Plan Lounge/Dining Room & Kitchen
- Secure Allocated Parking Space
- NO UPWARD CHAIN

£160,000

Current EPC Rating 84 (B)
Current Council Tax Band B

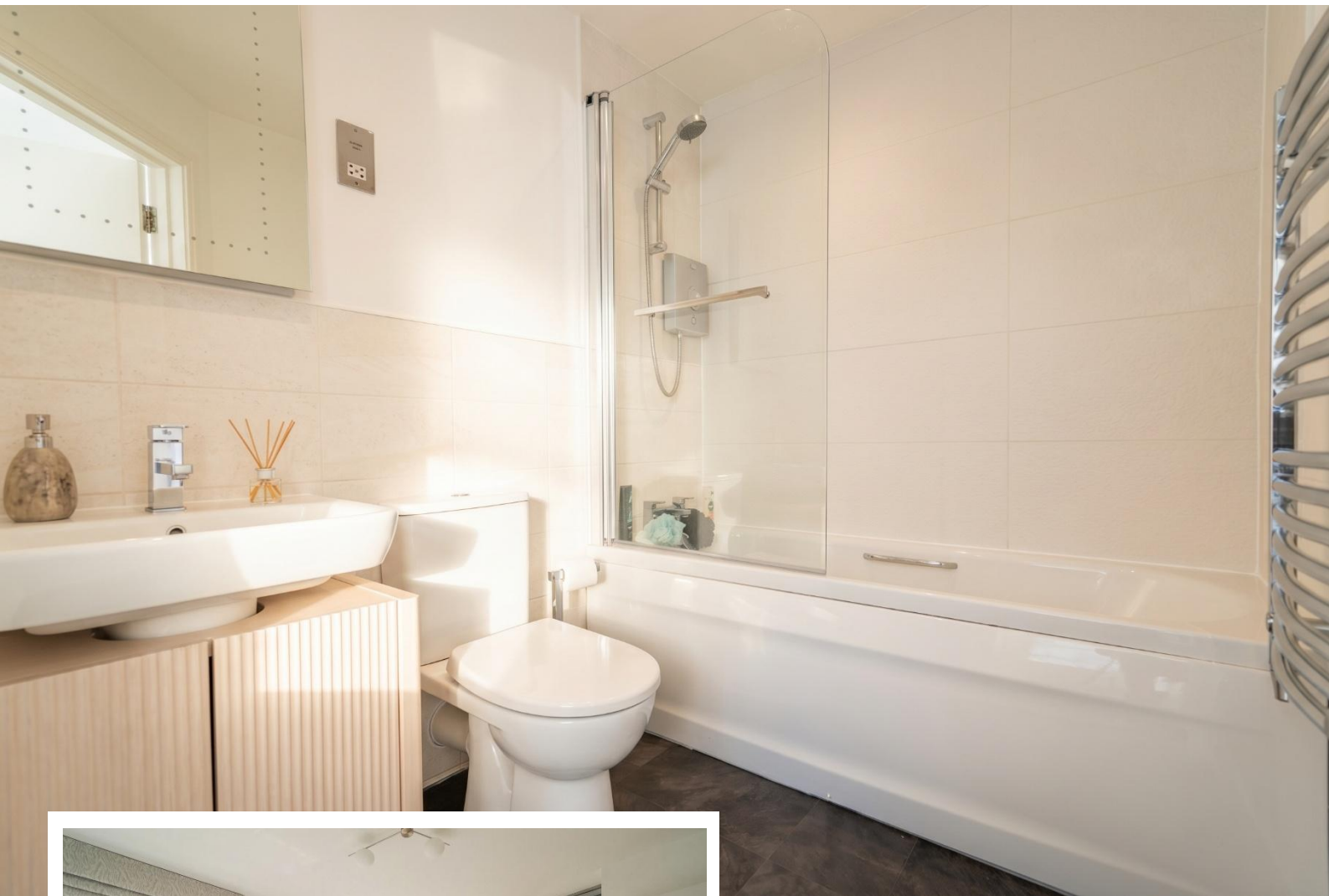




Property Description

A modern one bedroom first floor apartment benefiting from no upward chain and consisting of open plan lounge/dining room and kitchen, master bedroom with fitted wardrobes, modern bathroom, electric heating, double glazing, communal gardens and secure allocated parking space

Dickens Heath village offers a contemporary life style with a superb range of family homes and apartments, restaurants, offices, shops, medical surgeries as well as a local library, village hall and village green to provide that community lifestyle. Set within easy access to the M42 and train stations the village is ideal for families and commuters.



Rooms & Measurements

Private Entrance Hallway

Open Plan Lounge/Kitchen/Diner
6.3m x 3.6m (20'8" x 11'9")

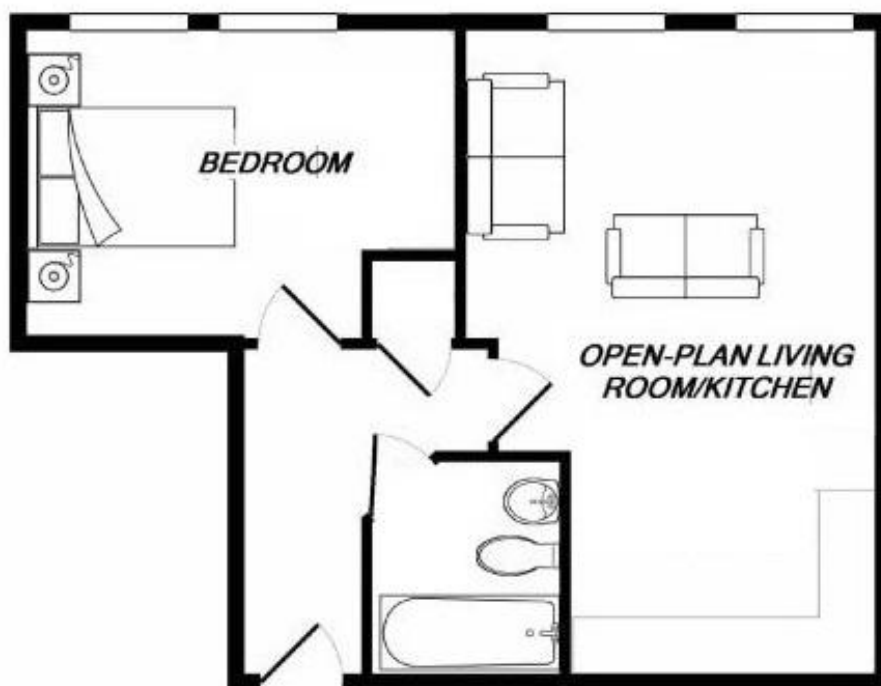
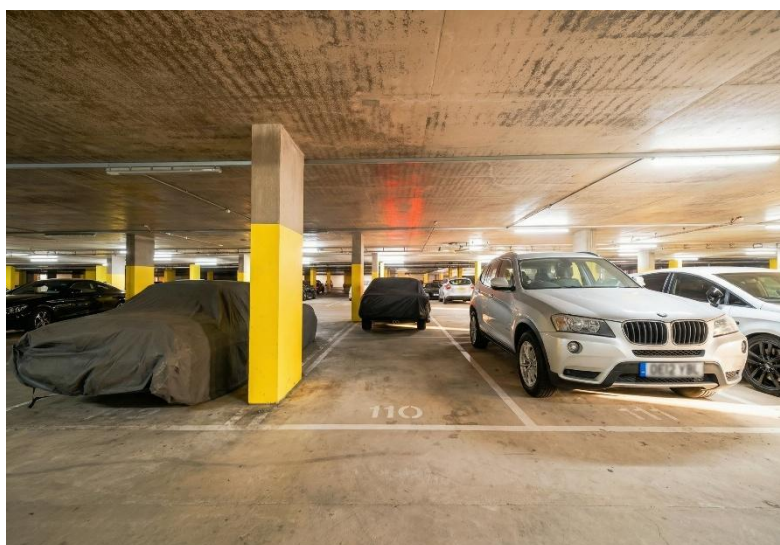
Spacious Double Bedroom
3.3m x 2.8m (10'9" x 9'2")

Modern Bathroom
2.2m x 1.6m (7'2" x 5'2")

Tenure

We are advised by the vendor that the property is leasehold with approx. 140 years remaining on the lease, a service charge of approx. £1630 per annum and a ground rent of approx. £250 per annum. We would advise all interested parties to obtain verification through their own solicitor or legal representative

EPC supplied by Vendor
Current council tax band – B



316 Stratford Road
Shirley
Solihull
B90 3DN

www.smart-homes.co.uk
0121 744 4144

Agents Note: Whilst every care has been taken to prepare these particulars, they are for guidance purposes only. We believe all information to be correct from the day of marketing however, we advise and recommend that your conveyancer and or surveyor verifies all information supplied. All measurements are approximate and are for general guidance purposes only and whilst every care has been taken to ensure their accuracy, they should not be relied upon and potential buyers are advised to recheck the measurements.