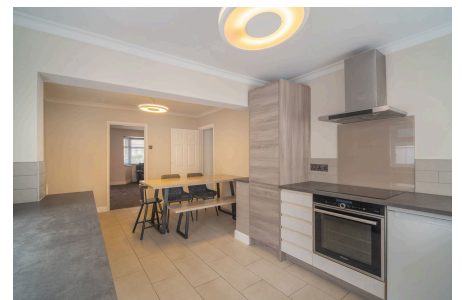


## Wold Walk, Birmingham, B13 0JS

Offers Over £250,000

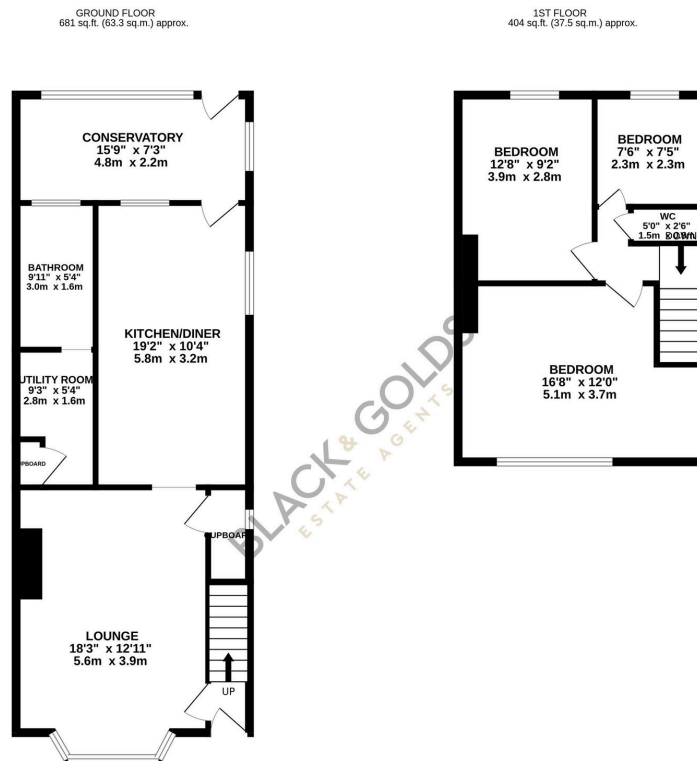
3 1 1



Extended Family Home with Further Potential in a Peaceful Residential Location – 20 Wold Walk, Birmingham, B13 0JS offered with NO UPWARD CHAIN.

## Key Features

- Spacious three-bedroom family home
- Large open-plan kitchen/diner perfect for family life
- Convenient utility room and ground floor bathroom
- Private rear garden with scope for landscaping or future enhancement
- Easy access to local amenities, schools, and transport links
- Bright and inviting bay-fronted lounge
- Additional conservatory providing further living space
- Three well-sized bedrooms with first-floor WC
- Quiet residential setting close to Moseley and Kings Heath
- Perfect home for families, upsizers, or long-term investors



TOTAL FLOOR AREA: 1085 sq.ft. (100.8 sq.m.) approx.

Whilst every effort has been made to ensure the accuracy of the description contained herein, measurements of doors, windows, rooms and any other items are approximate and no responsibility is taken for any error, omission or mis-statement. This plan is for illustrative purposes only and should be used as such for any prospective purchaser. The services, systems and appliances shown have not been tested and no guarantee as to their operability or efficiency can be given.  
Made with Metrepro 2025