



## Grove Park , Bury St. Edmunds, IP33 3BQ

Isaac Estates are delighted to market this 1 large Double room with en-suite. SINGLE PROFESSIONAL OCCUPANTS ONLY

Available 3rd/4th June (ROOM 1)

Are you a professional looking for a high end, double bedroom with en-suite? We have created bright, stylish double rooms available in a newly refurbished property. The room comes fully furnished with a comfortable double bed, a spacious private en-suite bathroom, and plenty of storage. 500MG WIFI to your room.

RENT GUARANTEE UNTIL 2028 - 2 years of fixed rent, Rent will not be reviewed until 2028!

£785 Per month

# Grove Park

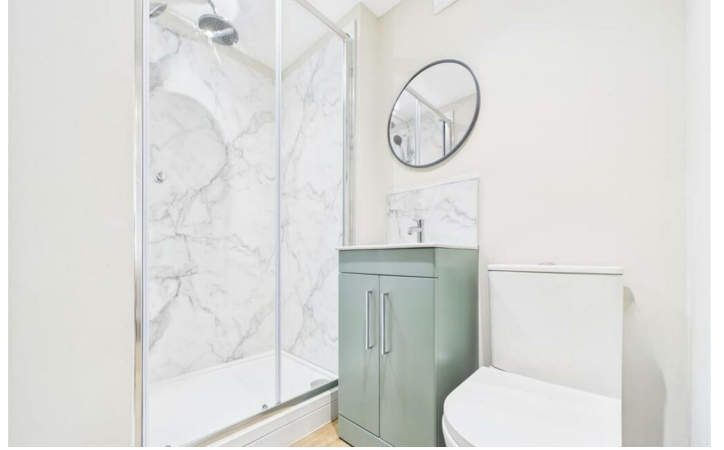
, Bury St. Edmunds, IP33 3BQ



- DOUBLE ROOM WITH EN-SUITE SHOWER ROOM
- ALL BILLS INCLUDED
- LOCATED CLOSE TO TOWN CENTRE
- CLEANED WEEKLY



[Directions](#)





# Floor Plan

These particulars, whilst believed to be accurate are set out as a general outline only for guidance and do not constitute any part of an offer or contract. Intending purchasers should not rely on them as statements of representation of fact, but must satisfy themselves by inspection or otherwise as to their accuracy. No person in this firm's employment has the authority to make or give any representation or warranty in respect of the property.

12 Langton Place, Hatter Street, Bury St Edmunds, Suffolk, IP33 1NE  
Tel: 01284 620011 Email: [ryan@isaacestates.co.uk](mailto:ryan@isaacestates.co.uk) [www.isaacestates.co.uk](http://www.isaacestates.co.uk)

