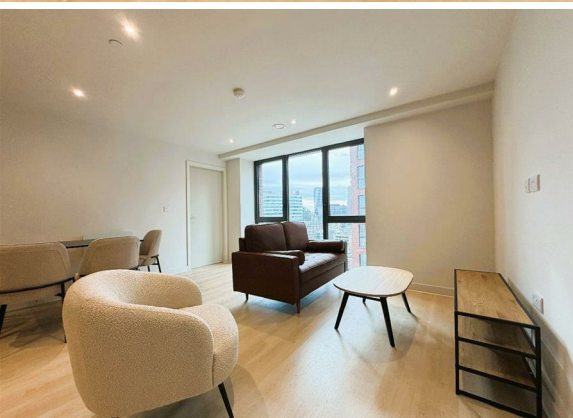




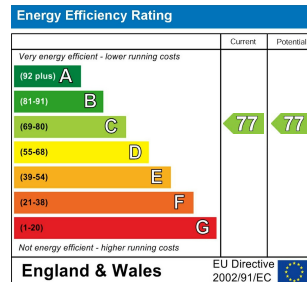
**2 Bed  
Apartment  
located in 1 Dutton  
Street**

**£1,650 PCM**



 **NPP  
RESIDENTIAL**

EPC Rating: C  
Council Tax Band: E



## DIRECTIONS

### CONTACT

22 Lloyd Street  
Manchester  
M2 5WA

E: [info@nppresidential.co.uk](mailto:info@nppresidential.co.uk)  
T: 0161 639 0059  
<https://nppresidential.co.uk/>

