



## Trafalgar Grove, SE10

£400,000

A charming one bedroom purpose built flat light and airy flat which has been finished to a great standard in a sought after location and benefits from a communal roof terrace with city views and a private garden. This property is offered to the market chain free.

Travers house is perfectly located on the corner Trafalgar Road and sits on the cusp of East and West Greenwich. The Royal Park with its Observatory is within a minutes walk. The town centre is also extremely close by, which offers a fantastic selection of shops and restaurants, along with mainline rail, DLR, riverboat service and Greenwich Market.

### Features

- Chain Free
- Ground Floor
- Modern Flat
- Private Garden
- Roof Terrace
- Sought After Location

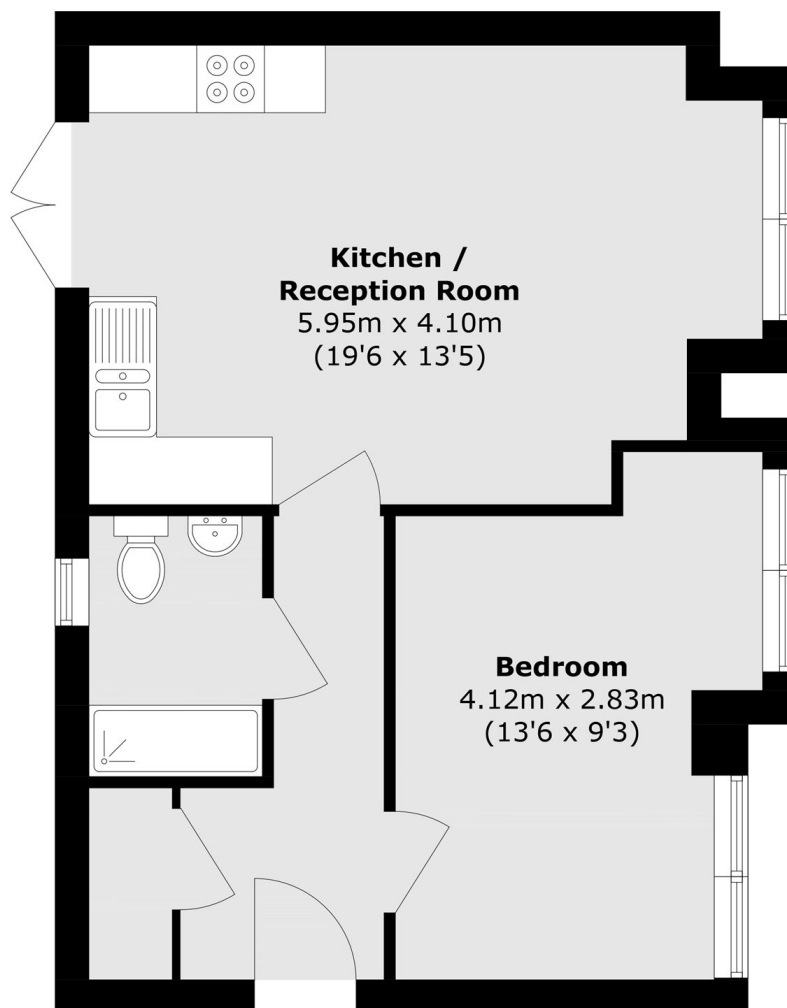


Trafalgar Grove, SE10





# Trafalgar Grove, London, SE10



Total area (approx.): 47.5 sq. m (511.2 sq. ft)