



# 284A Church Lane

Whitwick, Coalville, LE67 5DL

£435,000

Occupying a peaceful position with open countryside views to the rear, this immaculately presented five-bedroom detached residence offers approximately 1,539 sq. ft. of stylish and versatile living space. The home has been thoughtfully updated throughout, with a recently refitted kitchen and bathrooms, and enjoys a wonderful sense of privacy rarely found in similar homes locally. Early viewing is highly recommended to appreciate the space, setting, and standard of finish on offer.

Upon entering, you are welcomed by a bright and spacious entrance hall, providing access to the principal ground floor accommodation. This includes a generous living room featuring a characterful fireplace with inset log burner, a conservatory overlooking the rear garden, a practical utility room, guest cloakroom, and a superb open-plan kitchen and dining space. The kitchen has been beautifully refitted with modern cabinetry, integrated appliances, and ample space for entertaining and family life.

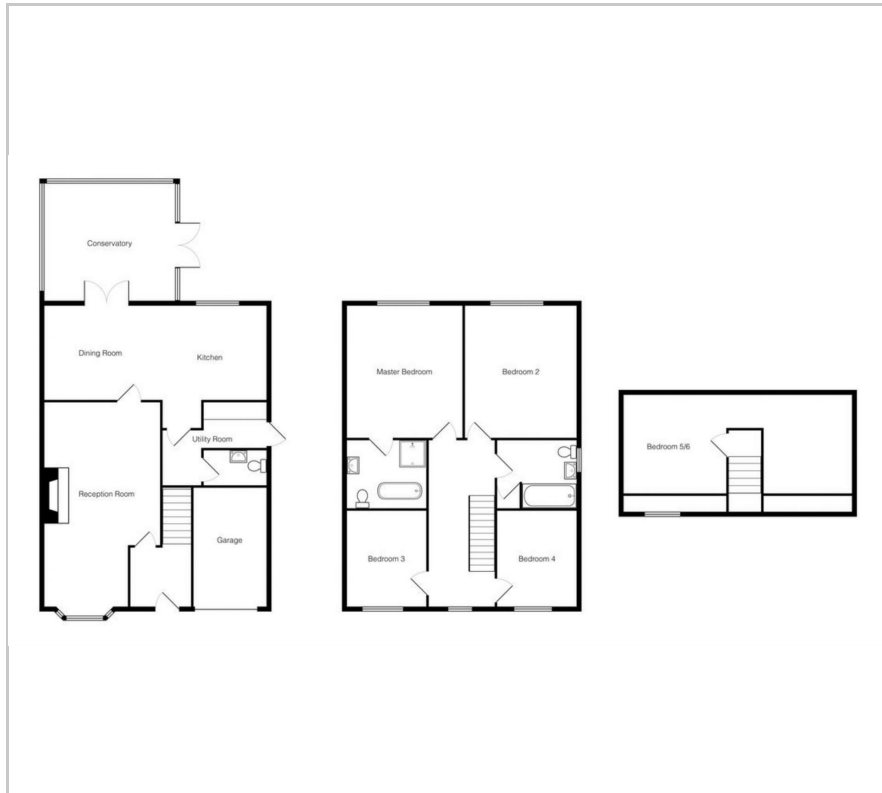
To the first floor, the impressive master suite is positioned to the rear elevation, benefitting from a luxurious en suite bathroom with freestanding bath and separate shower. Three further double bedrooms are served by a contemporary family bathroom, also recently refitted to a high

### Viewing

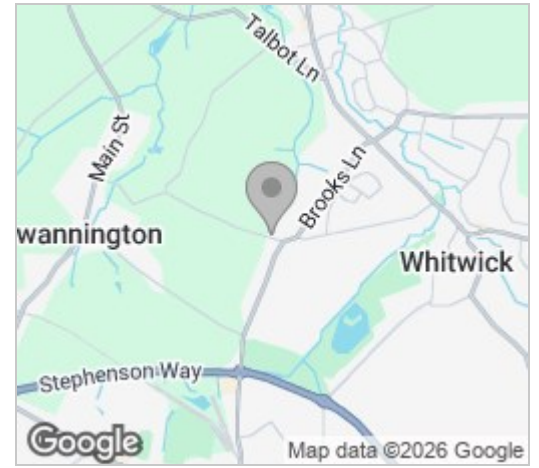
Please contact our Berkley Leicester Office on 0116 2544755 if you wish to arrange a viewing appointment for this property or require further information.



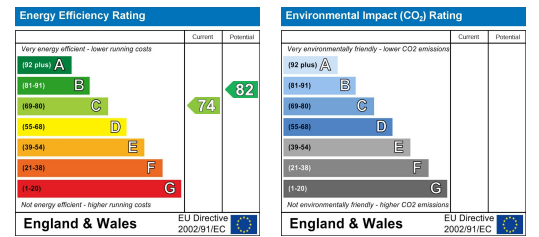
# Floor Plan



# Area Map



# Energy Efficiency Graph



These particulars, whilst believed to be accurate are set out as a general outline only for guidance and do not constitute any part of an offer or contract. Intending purchasers should not rely on them as statements of representation of fact, but must satisfy themselves by inspection or otherwise as to their accuracy. No person in this firm's employment has the authority to make or give any representation or warranty in respect of the property.