



  
SHORTLAND  
HORNE

Trusted  
Property Experts

  
SHORTLAND  
HORNE

Maidavale Crescent  
CV3 6GB

# Maidavale Crescent

## CV3 6GB

Nestled in the highly sought-after Maidavale Crescent in Styvechale, Coventry, this superior extended semi-detached family home offers an exceptional living experience. Spanning an impressive 1,550 square feet, this beautifully presented property has been tastefully decorated and thoughtfully improved to cater to modern family needs.

Upon entering, you are greeted by two spacious reception rooms, including a front lounge that provides a warm and inviting atmosphere. The heart of the home is undoubtedly the superbly extended kitchen/diner, which boasts fully fitted breakfast kitchen with integrated appliances, perfect for family gatherings and entertaining. The extended dining room features bi-fold doors that seamlessly connect the indoor space to the impressive landscaped rear garden, creating a delightful setting for outdoor enjoyment.

This home comprises four generously sized double bedrooms, ensuring ample space for family members or guests. The first floor also features a luxury family bathroom, while the ground floor includes a convenient shower room and a useful utility area, enhancing the practicality of daily living. Additionally, the property benefits from gas-fired central heating and double glazing throughout.

Externally, the property is complemented by a block-paved driveway that provides parking for several vehicles, along with access to an integral garage. The rear garden is a standout feature, being larger than average and fully enclosed, offering a mature and tranquil space with patio areas ideal for entertaining friends and family.

Situated close to the train station, War Memorial Park, and within the catchment area of the highly regarded Finham Park School, this home is perfectly positioned for families seeking both convenience and quality of life. This remarkable property truly represents a wonderful opportunity for those looking to settle in one of Coventry's most desirable locations.



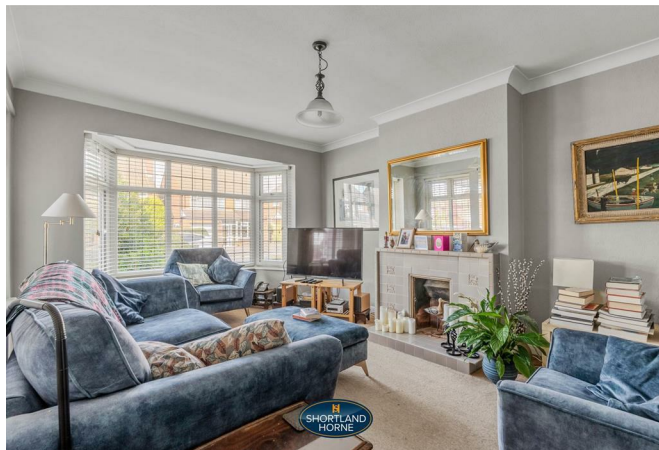
selling quality  
property since 1995







  
SHORTLAND  
HORNE



## Dimensions

### GROUND FLOOR

Entrance Hallway

Lounge

4.37m x 3.48m

Snug/Dining Room

6.91m x 3.15m

Kitchen/Breakfast Room

5.92m x 2.67m

Utility Room

Garage

5.41m x 2.24m

### FIRST FLOOR

Bedroom One

4.37m x 3.48m

Bedroom Two

3.91m x 3.51m

Bedroom Three

3.51m x 2.36m

Bedroom Four

3.20m x 2.36m

Bathroom

