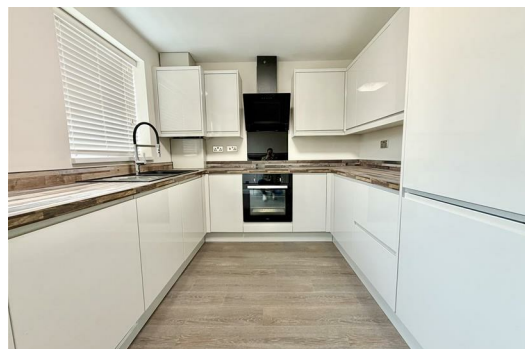
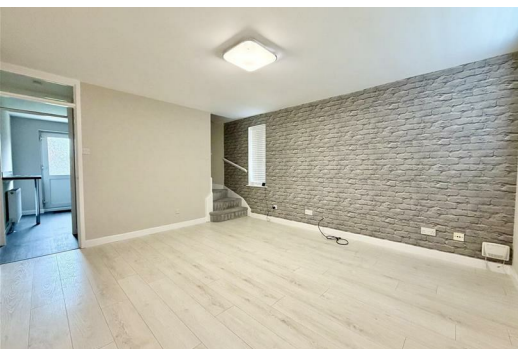




SYMONDS + GREENHAM

Estate and Letting Agents



22 Coronet Close, Hull, Yorkshire HU6 9UD

£750

Welcome to this charming two-bedroom semi-detached house located on the peaceful Coronet Close in Hull. This delightful property is now available for viewing and offers a wonderful opportunity for those seeking a comfortable home in a convenient location.

As you enter, you will find a spacious lounge that provides a warm and inviting atmosphere, perfect for relaxation or entertaining guests. The kitchen is equipped with integrated appliances, making it both functional and stylish for your culinary adventures.

Upstairs, the property boasts two generously sized double bedrooms, ensuring ample space for rest and personalisation. The well-appointed bathroom completes the first floor, providing all the necessary amenities for your daily routine.

One of the standout features of this home is the well-maintained garden at the rear, which includes a lovely paved area, ideal for outdoor dining or simply enjoying the fresh air. Additionally, the front of the property offers a convenient driveway, providing off-street parking for your vehicle.

Situated in a quiet neighbourhood, this property is close to a variety of amenities, including a supermarket and schools, making it an excellent choice for families. Furthermore, Hull University is nearby, and there are excellent transport links to Hull city centre and Kingswood, easily accessible by both bus and car.

This semi-detached house is a fantastic opportunity for anyone looking to settle in a friendly community while enjoying the comforts of modern living. Do not miss out on the chance to make this lovely property your new home. Call now to arrange a viewing!

CENTRAL HEATING

The property has the benefit of gas central heating (not tested).

DOUBLE GLAZING

The property has the benefit of double glazing.

COUNCIL TAX BAND

Symonds + Greenham have been informed that this property is in Council Tax Band B.

VIEWINGS

Please contact Symonds + Greenham on 01482 444200 to arrange a viewing on this property.

EPC

The EPC rating is a C.

