



**15 Ash Grove, Radlett
WD7 9FE
Offers Over £350,000**

Shenley Estates are delighted to offer for sale, this second floor, two double bedroom apartment located within the ever popular "Harperbury Park" Development. These apartments are sought after as they offer generous living space in a lovely setting.

Built by "Bloor Homes" in 2020, this spacious flat benefits from an open plan living/dining/kitchen area, two sizeable double bedrooms and a bathroom. The property also benefits from being well maintained, has ample storage and access to a communal garden to the rear as well as an allocated parking bay and bike shed.

This bright, airy apartment would suit first time buyers and downsizers alike. Immediate viewing is highly recommended.

Additional monthly costs
Service Charge: £106.28
Insurance Charge: £12
Management Fee: £23.33



Entrance Hall

Lounge Diner

19'4 x 10'3 (5.89m x 3.12m)

Kitchen

8'2 x 7'5 (2.49m x 2.26m)

Bedroom One

10'8 x 11'3 (3.25m x 3.43m)

Bedroom Two

10'1 x 9'1 (3.07m x 2.77m)

Bathroom

Communal Garden

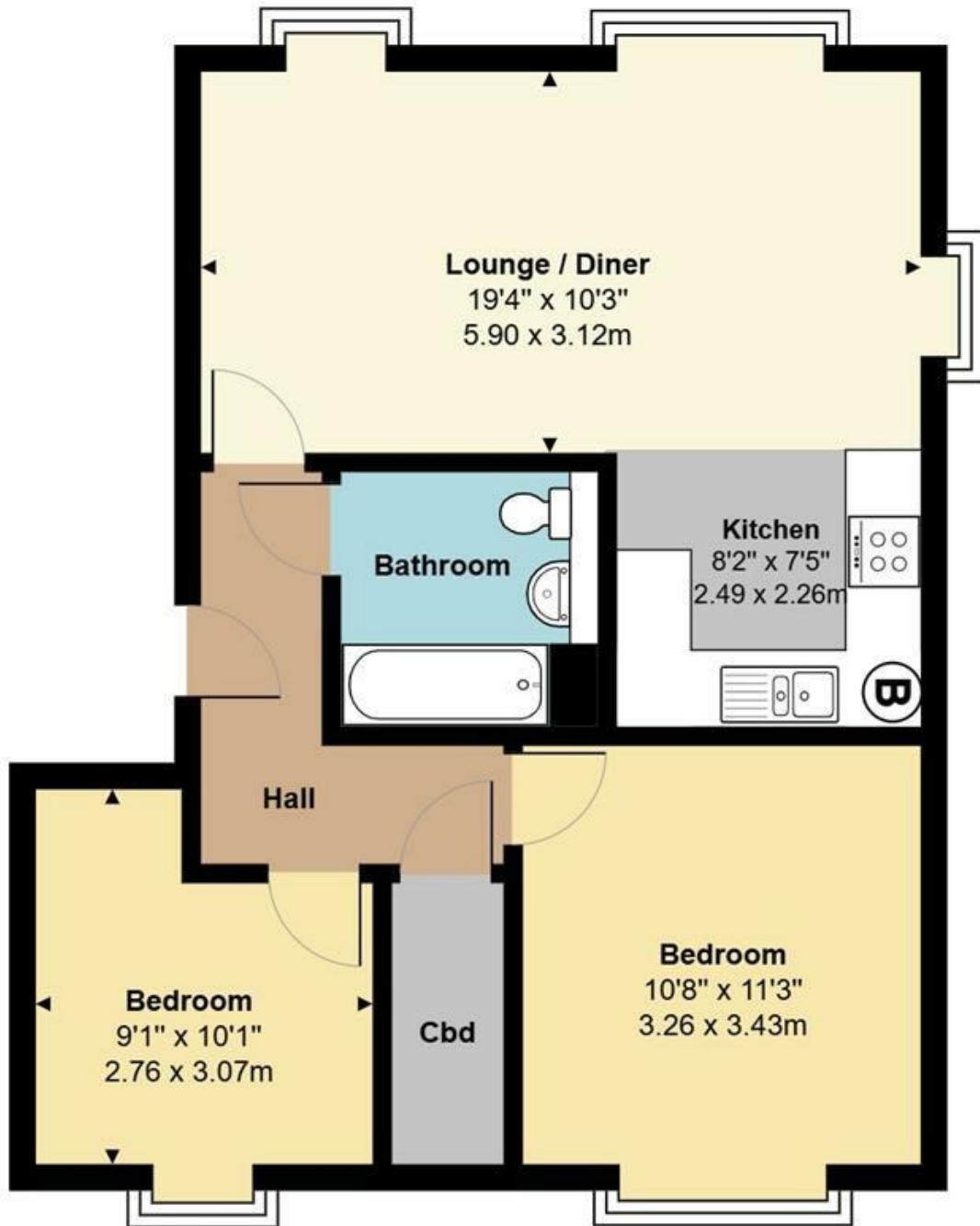
Parking

One allocated bay in the communal car park

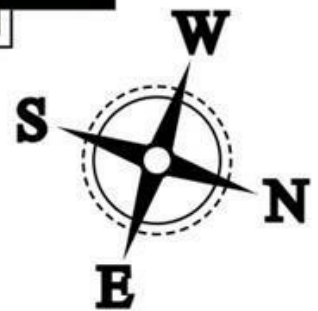
Energy Efficiency Rating		
	Current	Potential
Very energy efficient - lower running costs		
(92 plus) A		
(81-91) B		
(69-80) C		
(55-68) D		
(39-54) E		
(21-38) F		
(1-20) G		
Not energy efficient - higher running costs		
	83	83
England & Wales	EU Directive 2002/91/EC	

Environmental Impact (CO ₂) Rating		
	Current	Potential
Very environmentally friendly - lower CO ₂ emissions		
(92 plus) A		
(81-91) B		
(69-80) C		
(55-68) D		
(39-54) E		
(21-38) F		
(1-20) G		
Not environmentally friendly - higher CO ₂ emissions		
England & Wales	EU Directive 2002/91/EC	





Second Floor
 Area: 633 ft² ... 58.8 m²



20 Andrew Close, Shenley | Herts WD7 9LP
 Tel: 01923 856464 | Email: info@shenleyestates.com

