



*jordan fishwick*

Storey Road Disley Stockport

# Storey Road Disley Stockport SK12 2AU

£375,000



## The Property

Tucked away in a private position, within an established and popular modern development in Disley, a three double bedroom detached family home. Convenient for all local amenities and the Peak Forest Canal. Superbly presented throughout and comprising: entrance hall, living room, inner hall, wc, dining kitchen, conservatory, first floor master bedroom with en-suite shower, two further bedrooms with fitted wardrobes and a family bathroom. Integral garage, driveway, extra parking to the front and low maintenance private gardens. Pvc double glazing and gas central heating. Viewing highly recommended.




- Superbly Presented Throughout
- Three Generous Bedrooms
- Private Position
- Part of a Small Modern Development
- Detached Family Home
- Low Maintenance Garden
- Driveway, Extra Parking and Integral Garage
- Additional Conservatory
- Convenient For Disley Village
- Close to The Peak Forest Canal

**Postcode** SK12 2AU

**EPC Rating**

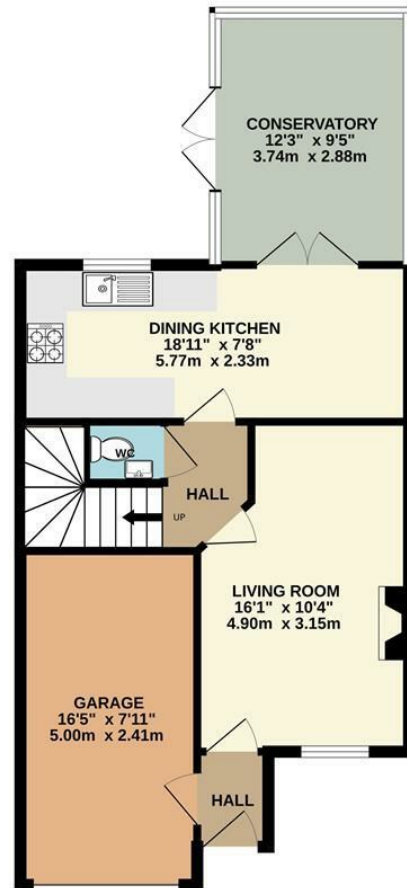
**Local Authority** Cheshire East

**Council Tax** D

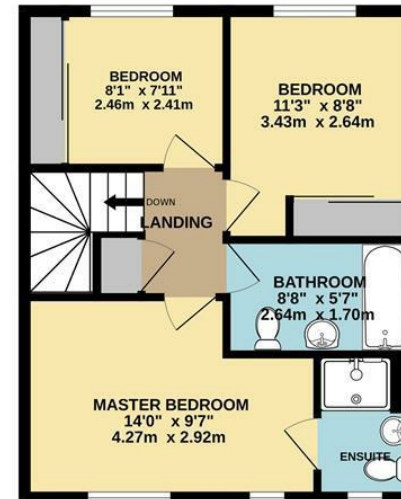
Energy Efficiency Rating		
	Current	Potential
Very energy efficient - lower running costs		
(92 plus) <b>A</b>		
(81-91) <b>B</b>		
(69-80) <b>C</b>		
(55-68) <b>D</b>		
(39-54) <b>E</b>		
(21-38) <b>F</b>		
(1-20) <b>G</b>		
Not energy efficient - higher running costs		
<b>England &amp; Wales</b>	EU Directive 2002/91/EC 	



GROUND FLOOR



1ST FLOOR



Whilst every attempt has been made to ensure the accuracy of the floorplan contained here, measurements of floors, windows, rooms and any other items are approximate and no responsibility is taken for any error, omission or mis-statement. This plan is for illustrative purposes only and should be used as such by any prospective purchaser. The services, systems and appliances shown have not been tested and no guarantee as to their operability or efficiency can be given.  
Made with Metropix ©2025



These particulars are believed to be accurate but they are not guaranteed and do not form a contract. Neither Jordan Fishwick nor the vendor or lessor accept any responsibility in respect of these particulars, which are not intended to be statements or representations of fact and any intending purchaser or lessee must satisfy himself by inspection or otherwise as to the correctness of each of the statements contained in these particulars. Any floorplans on this brochure are for illustrative purposes only and are not necessarily to scale.

Offices at: Chorlton, Didsbury, Disley, Hale, Glossop, Macclesfield, Manchester Deansgate, Manchester Whitworth Street, New Mills, Sale, Wilmslow and Withington

14 Market St, Disley, Cheshire, Stockport SK12 2AA

01663 767878

disley@jordanfishwick.co.uk

www.jordanfishwick.co.uk