

# Rolfe East



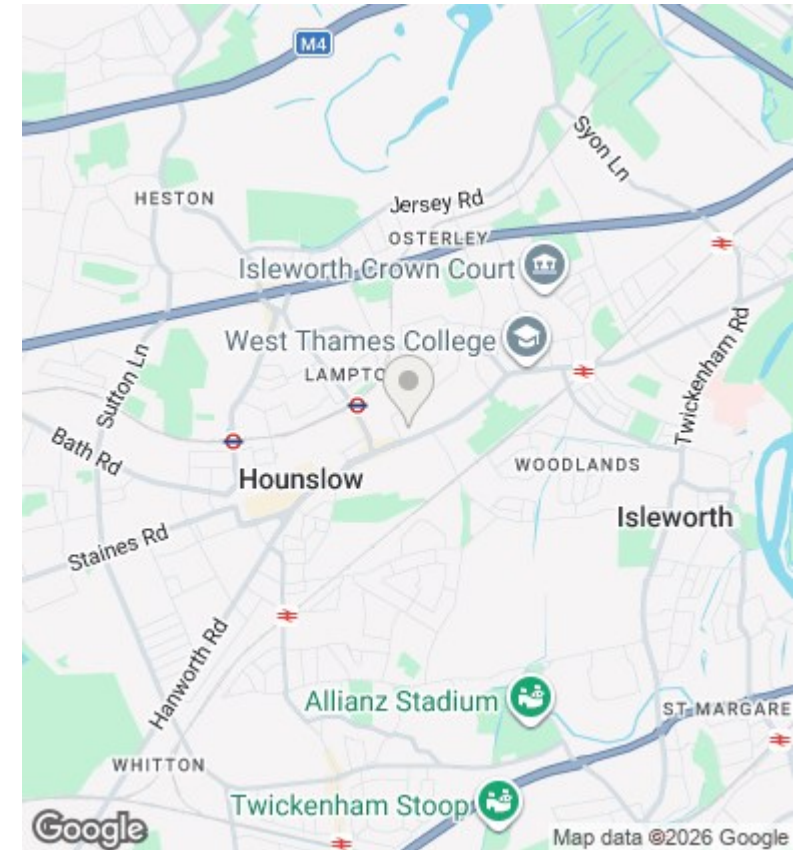
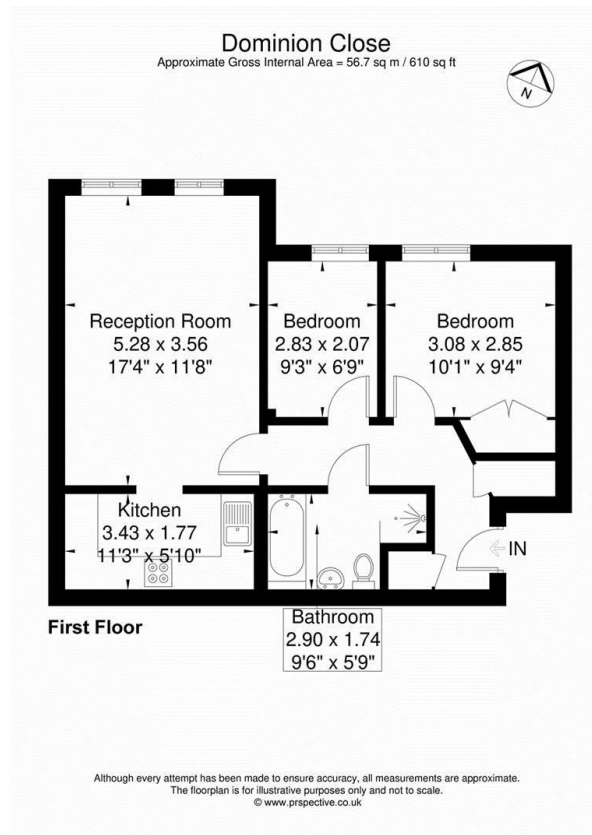
## Dominion Close, Hounslow, TW3 1PJ

£1,650 Per Month

- Two bedroom flat
- Allocated gated parking
- Redecorated
- Double glazed throughout
- Ready to move into in May
- Convenient for Piccadilly line
- Unfurnished

289 Northfield Avenue, Ealing, W5 4XB  
020 8579 1111

northfieldslettings@rolfe-east.com  
<https://www.rolfe-east.com/>



## Directions

## Viewings

Viewings by arrangement only. Call 020 8579 1111 to make an appointment.

## Council Tax Band

C

## EPC Rating:

Energy Efficiency Rating		
	Current	Potential
<i>Very energy efficient - lower running costs</i>		
(92 plus) <b>A</b>		
(81-91) <b>B</b>		
(69-80) <b>C</b>		
(55-68) <b>D</b>		
(39-54) <b>E</b>		
(21-38) <b>F</b>		
(1-20) <b>G</b>		
<i>Not energy efficient - higher running costs</i>		
<b>England &amp; Wales</b>	EU Directive 2002/91/EC	