



## Argyle Road, W13

### £420,000

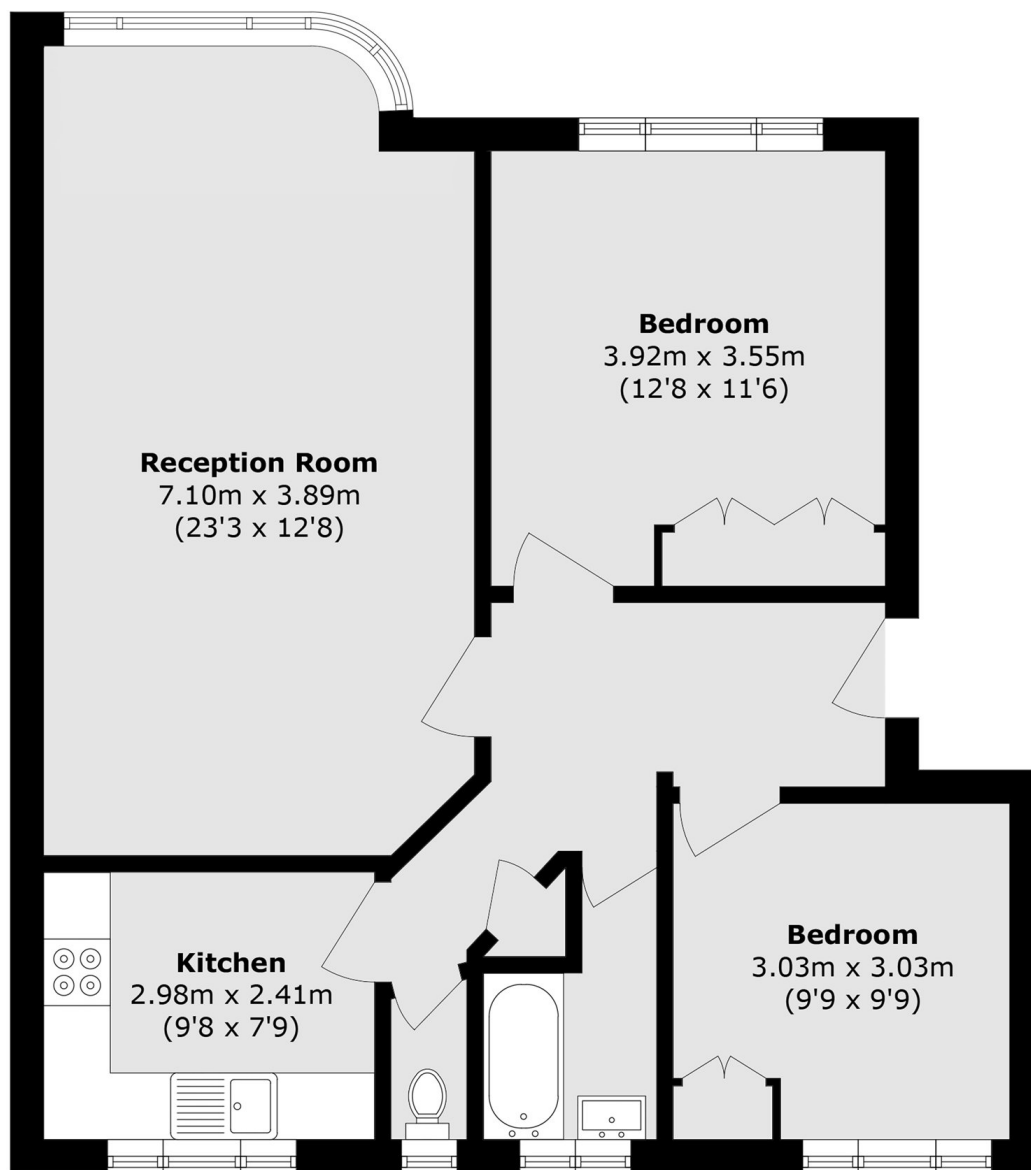
A wonderful first-floor two bedroom purpose-built apartment enjoying wonderful views over Cleveland Park from both the living room and principal bedroom. Well presented throughout, the property features a spacious living room, a separate kitchen, and a bathroom, creating a bright and comfortable home.

Located on Cleveland Road, directly opposite Cleveland Park, this property is ideally positioned approximately half a mile from West Ealing station, providing convenient access via the Elizabeth line. The popular shops, cafés and restaurants of Pitshanger Lane are also within half a mile, offering an excellent range of local amenities.

### Features

- Two Bedrooms
- First Floor
- No Onward Chain
- Garage
- Communal Gardens
- Views Over Cleveland Park

# Argyle Road, London, W13



Total area (approx.): 72.9 sq. m (784.7 sq. ft)