



Gloucester Place, NW1

£500,000

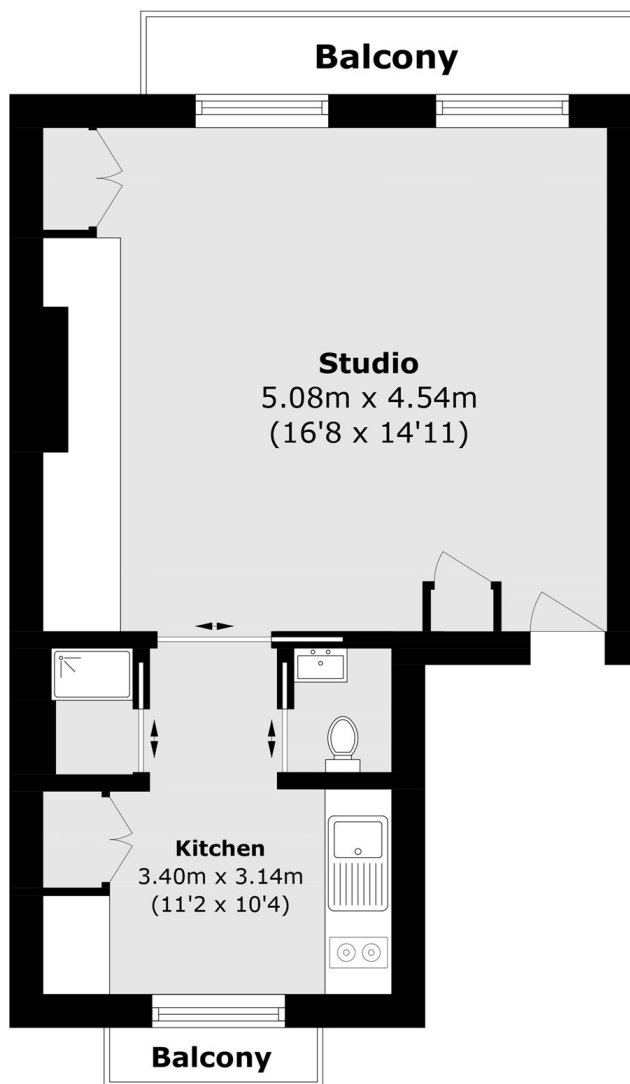
A bright and well presented first-floor studio apartment set within a charming Georgian building, conveniently located moments from Regent's Park. Long lease with a share of freehold.

Located conveniently for London Business School, Regents University and Marylebone High Street. Local stations are London Marylebone and Baker Street.

Features

- 999 Year Lease From 1981
- Share Of Freehold
- Annual Service Charge £900
- First Floor
- Close To Regents Park
- Built-In Storage

Gloucester Place, London, NW1



Total area (approx.): 33.3 sq. m (358.4 sq. ft)

Balcony area (approx.): 3.9 sq. m (41.9 sq. ft)