



KINGSTON ROAD

LEATHERHEAD, KT22 7BW

**An Extended & Recently Modernised
Character Semi Detached House
Spacious & Flexible Accommodation
Within Walking Distance Town Centre &
Station**

**No Ongoing Chain • Four Double Bedrooms
Luxury 4 Piece First Floor Bathroom
Entrance Hall • Lounge with Fireplace
Luxury Shower Room • Utility Room
Newly Fitted Kitchen/Dining/Family Room
Sealed Unit Double Glazed Windows
Integral Garage
Ample Off Street Parking
Gas Central Heating To Radiators
Landscaped Rear Garden
Potential To Enlarge, if desired**



AN EXTENDED & RECENTLY MODERNISED CHARACTER semi detached house offering particularly spacious & flexible accommodation situated within a few minutes' walk of the town centre and main line station. The house provides 4 double bedrooms, luxury 4 piece modern bathroom suite and modern shower room. On the ground floor the kitchen/breakfast room opens into the dining room and family room with bi fold doors overlooking the garden. The kitchen features a range of modern units, composite stone worktops, Quooker boiling water tap, Leisure Cuisinmaster Range Cooker, eye level microwave and integrated dishwasher. The house benefits further from gas central heating with a newly fitted boiler, new double glazed windows and secluded garden with a full width paved patio, covered entertaining area with bar, raised timber deck and seating. At the front of the property there is ample parking with a turning area and electric car charging point.

GROUND FLOOR

ENTRANCE HALL

part glazed front door, recessed ceiling lights, tiled floor, door to garage, opening to:

INNER HALL 14' × 6'1" (4.27m × 1.85m)

max, radiator, coved ceiling, door to:

LUXURY CLOAKROOM/SHOWER ROOM

modern white suite comprising full width low profile shower tray, thermostatic shower, fixed head rainfall shower plus hand held shower, fixed glazed shower screen, tiled recess, low level w.c., vanity unit, inset wash hand basin, mixer tap, cupboard under, chrome towel rail, extractor fan, fully tiled walls, ceramic tiled walls, recessed ceiling lights.

BEDROOM 4 9'5" × 7'5" (2.87m × 2.26m)

feature radiator, sealed unit double glazed window, front aspect.

LOUNGE 15'1" × 10'7" (4.60m × 3.23m)

attractive Adam style central stone fireplace, stone mantel & hearth, radiator, sealed unit double glazed window.

KITCHEN/DINING/FAMILY ROOM 24'10" × 18'4" (7.57m × 5.59m)

Overall. A superb L shaped room with the dining room leading into the family room and full height bi fold doors from the kitchen overlooking the garden. The kitchen/breakfast room is fitted with a range of contemporary fronted units and drawers including a substantial peninsula with breakfast bar featuring a handleless design and complemented with Quartz worktops. Feature Quooker filter and boiling water tap, under slung stainless sink, Cuisinmaster Leisure Rangemaster with 3 ovens and ceramic hob, extractor hood, eye level stainless steel microwave, integrated dishwasher, ceramic tiled floor, part tiled walls, concealed lighting, recessed ceiling lights, feature radiator. Dining area opening to family room, sealed unit double glazed window, fitted shelves, fitted cupboards, recessed ceiling lights, ceramic tiled floor, feature radiator, understairs cupboard, consumer unit.

UTILITY ROOM 8'5" × 8'1" (2.57m × 2.46m)

Fitted shelves, double base unit, inset single drainer stainless steel sink unit, mixer tap, work surface, plumbing and space for washing machine, vent for dryer, wall mounted Glow Worm combination gas fired boiler for central heating and domestic hot water, light grey effect floor, radiator, sealed unit double glazed window.

FIRST FLOOR

FIRST FLOOR LANDING

access to partly boarded loft with light via sliding ladder, built in linen cupboard with slatted shelves.

BEDROOM 1 15'2" × 12'2" (4.62m × 3.71m)

max, built in shelved wardrobe plus three double built in wardrobes, feature radiator, sealed unit double glazed window, front aspect.

BEDROOM 2 13'10" × 12'4" (4.22m × 3.76m)

access to eaves storage area, sealed unit double glazed window, rear aspect, radiator.

BEDROOM 3 12'3" × 9'3" (3.73m × 2.82m)

fitted wardrobes, bed recess, cupboards above, sealed unit double glazed window, rear aspect, radiator.

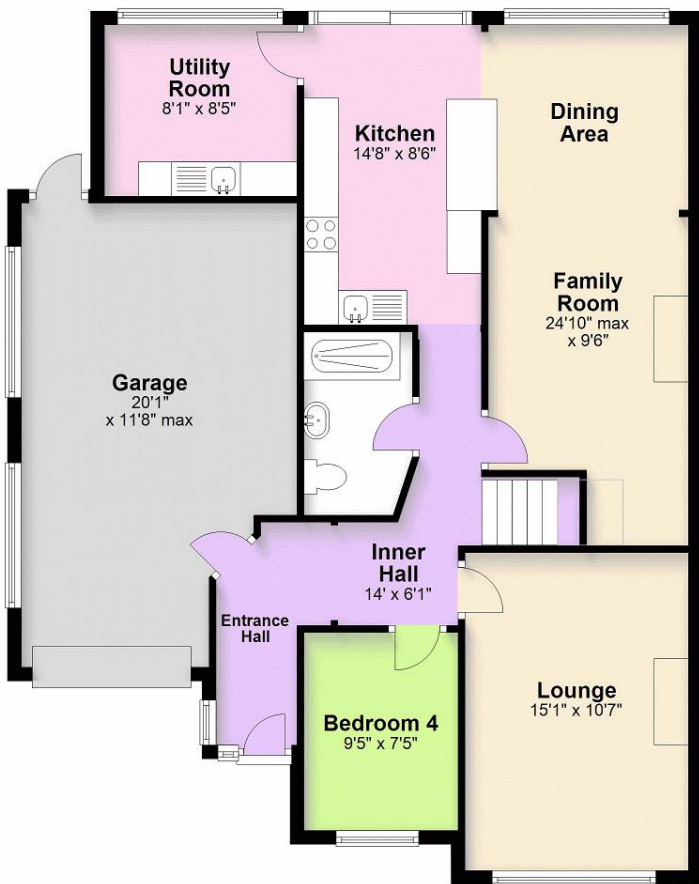
LUXURY BATHROOM

modern white suite comprising roll top free standing bath, mixer tap and shower attachment, low level w.c., pedestal wash hand basin, fully tiled shower cubicle, independent Triton shower unit, glazed screen and door, extractor fan, part tiled walls, chrome heated towel rail, ceramic tiled floor, obscure double glazed window.



Ground Floor

Approx. 1115.1 sq. feet



First Floor

Approx. 657.3 sq. feet



Total area: approx. 1772.4 sq. feet

OUTSIDE

GARAGE 20'1" x 11'8" (6.12m x 3.56m)

light, swing front doors, door to rear.

FRONT GARDEN

To the front of the property there is a blocked paved driveway and gravel turning area allowing ample parking, electric charging point, flower borders with shrubs and plants, partly enclosed by panel fencing with mature evergreen hedge marking the boundary.

REAR GARDEN

The garden is mainly laid to lawn with raised flower borders, variety of shrubs and plants, full width paved patio, courtesy lights, outside cold water tap, paved footpaths, covered entertaining area with bar, raised timber deck and fixed seating. The garden enjoys a secluded south east facing aspect and is partly enclosed by panel fencing.

Note 1 - Please note domestic and electrical appliances have not been tested.

Note 2 - Mains gas, electricity, water and drainage are all connected to the property.

Note 3 - Council Tax Band E - Mole Valley Council.

**VIEWING STRICTLY BY APPOINTMENT ONLY
THROUGH THE VENDORS AGENTS HUGGINS
EDWARDS & SHARP**

BOOKHAM SALES OFFICE

11 HIGH STREET, BOOKHAM, KT23 4AA

01372 457011

sales@hes-bookham.co.uk

Energy Performance Certificate

Energy Rating
E

Score	Energy Rating	Current	Potential
92+	A		
81-91	B		
69-80	C		79
55-68	D		
39-54	E	51	
21-38	F		
1-20	G		

HUGGINS EDWARDS & SHARP IS A TRADING NAME OF C & C ESTATES SOUTHERN LTD, A LIMITED COMPANY REGISTERED IN ENGLAND & WALES. COMPANY NUMBER 15446105. REGISTERED OFFICE: 4 BETCHWORTH PLACE, DORKING, RH4 1BF. C & C ESTATES SOUTHERN LTD FOR THEMSELVES AND FOR VENDORS OR LESSORS OF THIS PROPERTY WHOSE AGENTS THEY ARE GIVE NOTICE THAT THE PARTICULARS CONTAINED HERE ARE SET OUT AS GENERAL OUTLINE ONLY FOR THE GUIDANCE OF INTENDED PURCHASERS OR LESSEES, AND DO NOT FORM PART OF ANY OFFER OR CONTRACT. ALL DESCRIPTIONS, DIMENSIONS, REFERENCE TO CONDITION AND NECESSARY PERMISSIONS FOR USE AND OCCUPATION, AND OTHER DETAILS ARE GIVEN WITHOUT RESPONSIBILITY AND ANY INTENDING PURCHASERS OR LESSEES SHOULD NOT RELY ON THEM AS STATEMENTS OR REPRESENTATIONS OF FACT BUT MUST SATISFY THEMSELVES BY INSPECTION OR OTHERWISE AS TO THE CORRECTNESS OF EACH OF THEM.



www.hugginsedwards.co.uk

