



**Brixton Road, Brixton, SW9**

2 bedroom flat - purpose built for sale

**£530,000**

Leasehold

## Property Details

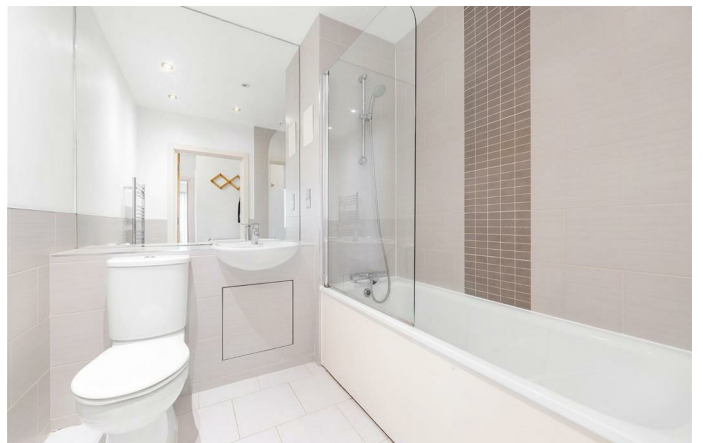
A spectacular two bedroom penthouse apartment with a private wrap-around terrace offering striking City and Sunset views, set within a secure modern development. Occupying the top floor, the home enjoys a bright, peaceful, and private position. The exceptional terrace captures panoramic views across London, with the City to the north, sunshine throughout the day, and stunning westerly sunsets. Perfect for entertaining or relaxing, it creates seamless indoor-outdoor living against a dramatic skyline backdrop. The open-plan reception room is flooded with natural light from double-aspect windows and two sets of doors to the balcony. The contemporary kitchen features cream cabinetry, grey worktops, subway-tiled splashbacks, generous storage, and integrated appliances. Both double bedrooms are positioned to the rear. The principal bedroom benefits from floor-to-ceiling glazing and built-in wardrobes, while the second bedroom offers flexible space for guests or home working. A modern bathroom completes the accommodation. Residents also enjoy an additional roof terrace, garden, bike storage, and lift access.

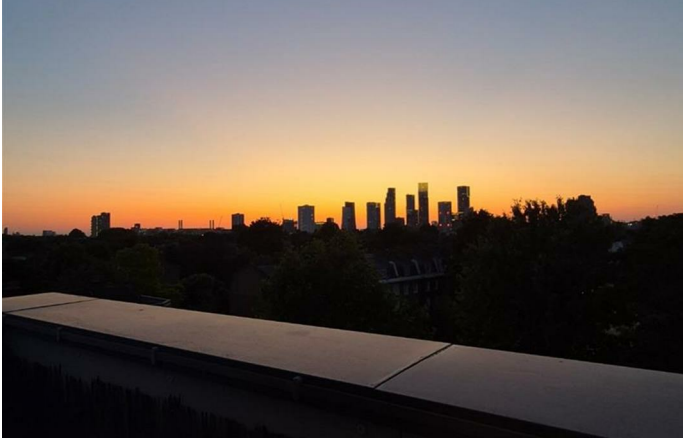
Council tax band D

EPC rating B (82)

## Features

- Penthouse apartment
- Wrap-around terrace with City and Sunset views
- Two double bedrooms
- Secure modern development
- Bright and private position
- Additional residents' terrace and garden
- Lift access and bike storage
- Central Brixton location
- Clapham High Street within walking distance
- Victoria and Northern Lines

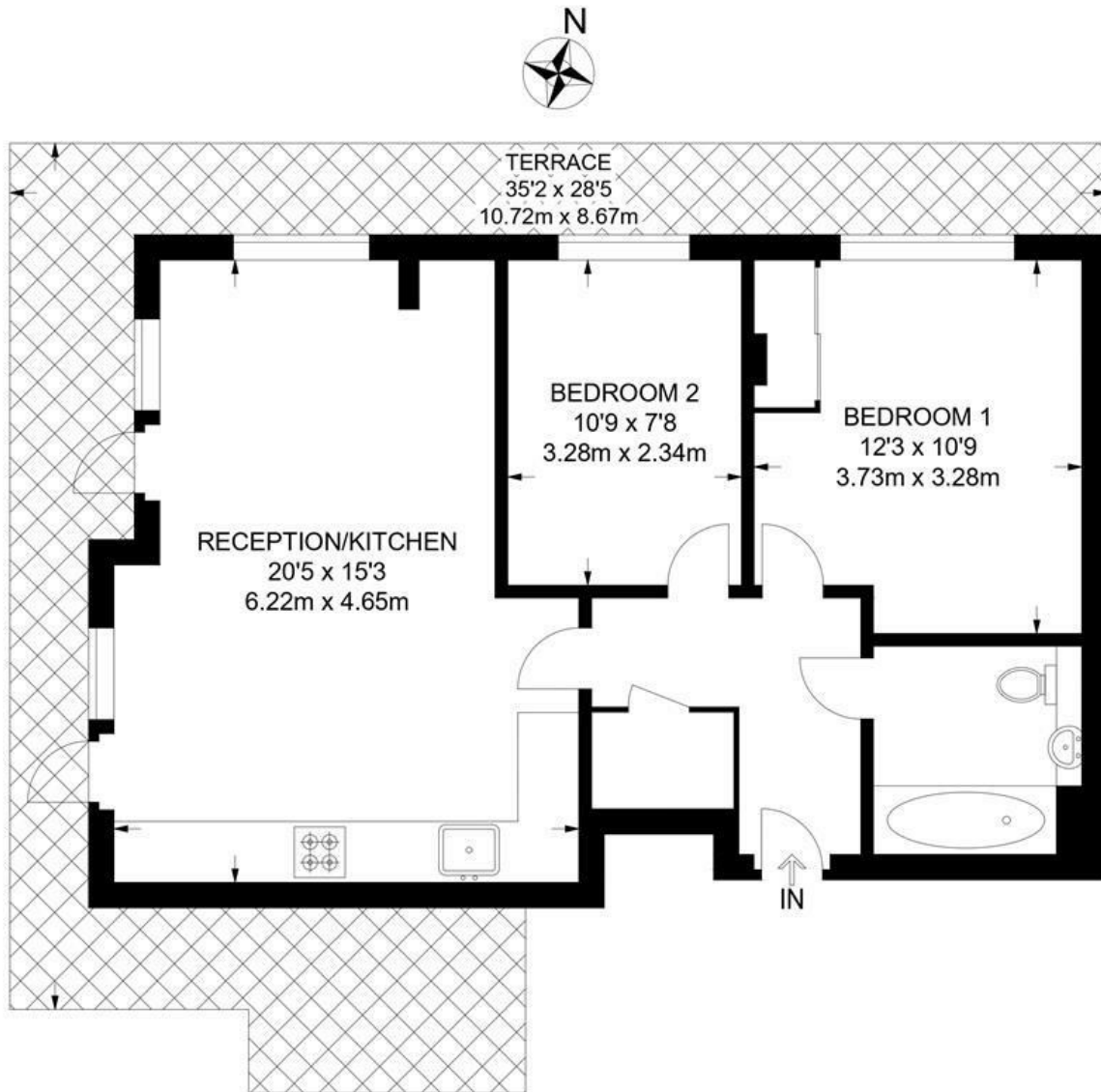




Brixton Road, Brixton, SW9

**Brixton Road, SW9**  
**2 Bedroom Flat**

APPROXIMATE GROSS INTERNAL AREA: **610 SQ FT / 56.7 SQ M**



**FIFTH FLOOR**



While we try our very best, floor plans are produced as a guide only and we take no responsibility for the precise accuracy with which any property is represented.

Brixton Road, Brixton, SW9

