



Beaconsfield Road, TW1

£1,550,000

This well presented and generously proportioned family home is situated on the highly desirable Beaconsfield Road, offering spacious and flexible accommodation ideally suited to modern family living.

Beaconsfield Road is located in the sought-after residential area of St Margarets village. It is within easy reach of local schools, transport links and amenities. This is a rare chance to add value in a desirable location ideal for families and end-users looking for a project. Moor Mead Park and Marble Hill Park are also close by.

Features

- Semi-Detached
- Victorian Family Home
- Central Location
- Five Bedrooms
- Two Reception Rooms
- Beautiful Original Features



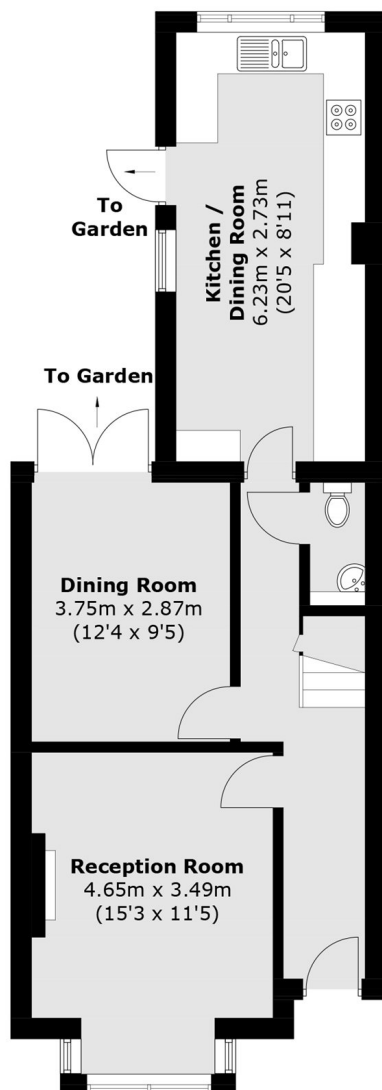
Beaconsfield Road, TW1

Arranged over three floors, the property provides well balanced and versatile space throughout. The ground floor features a welcoming entrance hallway leading to spacious reception areas, ideal for both everyday living and entertaining. The galley style kitchen is neatly arranged with ample storage and worktop space and opens onto a pleasant patio area to the side; creating a practical and attractive space for outdoor dining or relaxing. As well as providing access to the rear garden.

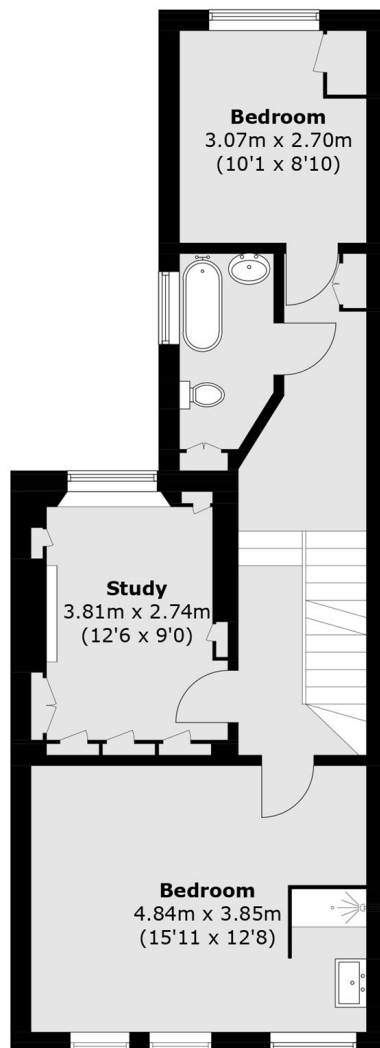
The first floor hosts the principal bedroom, which benefits from its own en suite bathroom, along with two additional well proportioned bedrooms. A modern family bathroom serves the remaining rooms on this level. The loft has been converted to provide further flexible accommodation, comprising an additional bedroom with a private en suite shower room. As well as a separate office ideal for home working, study or occasional guest use.



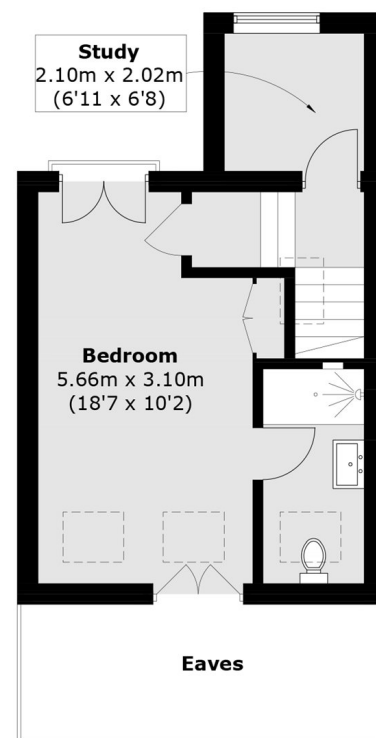
Beaconsfield Road, Twickenham, TW1



Ground Floor



First Floor



Second Floor

Total area (approx.): 143.7 sq. m (1546.8 sq. ft)
(Excluding Eaves)