



## Western Gardens, W5

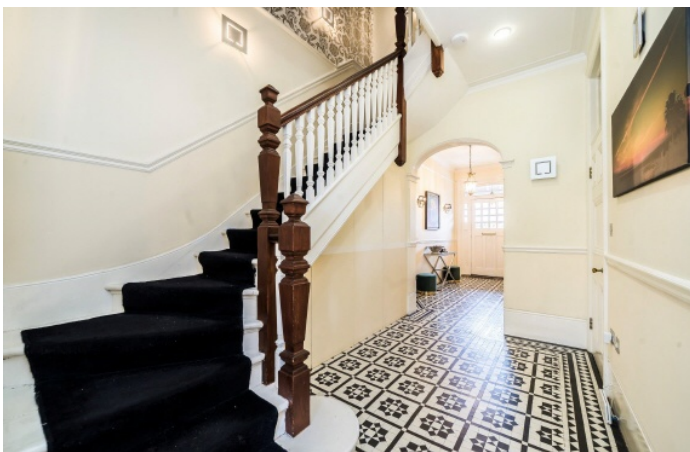
£2,250,000

This impressive period home blends elegant original character with beautifully designed family living space. Arranged over three floors, the house offers generous proportions, with charming period detailing including feature fireplaces and ornate ceiling plasterwork adding warmth and character to the contemporary finish.

Ideally positioned close to the amenities of Ealing Common and West Acton, with excellent transport connections including the Piccadilly Line, Central and District lines. The area is also well known for its excellent schools, green open spaces and strong sense of community.

### Features

- Semi Detached
- Five Bedrooms
- Three Bathrooms
- Two Reception Rooms
- Off Street Parking
- Private Garden



## Western Gardens, W5

The ground floor has been thoughtfully arranged for modern living, with a welcoming front reception providing a cosy retreat, while to the rear a substantial extended kitchen, dining/living space forms the heart of the home. A convenient downstairs WC completes the accommodation on this level.

On the first floor, the principal suite offers a luxurious private sanctuary, complete with a dressing area and a spacious bathroom featuring both a bath and separate shower. In addition on the first and second floors there are four further double bedrooms and two additional bathrooms, providing flexible accommodation for families, guests or working from home.

The landscaped rear garden has been designed for both relaxation and entertaining, with the added benefit of a substantial garden studio ideal as a home office, gym or creative workspace. To the front, the property further benefits from off-street parking, a highly desirable feature for this location.



# Western Gardens, London, W5



Total area (approx.): 230.0 sq. m (2,475.5 sq. ft)  
 Outbuild area (approx.): 13.7 sq. m (147.4 sq. ft)  
 (Excluding Eaves)