



Briscoe Road, SW19

£565,000

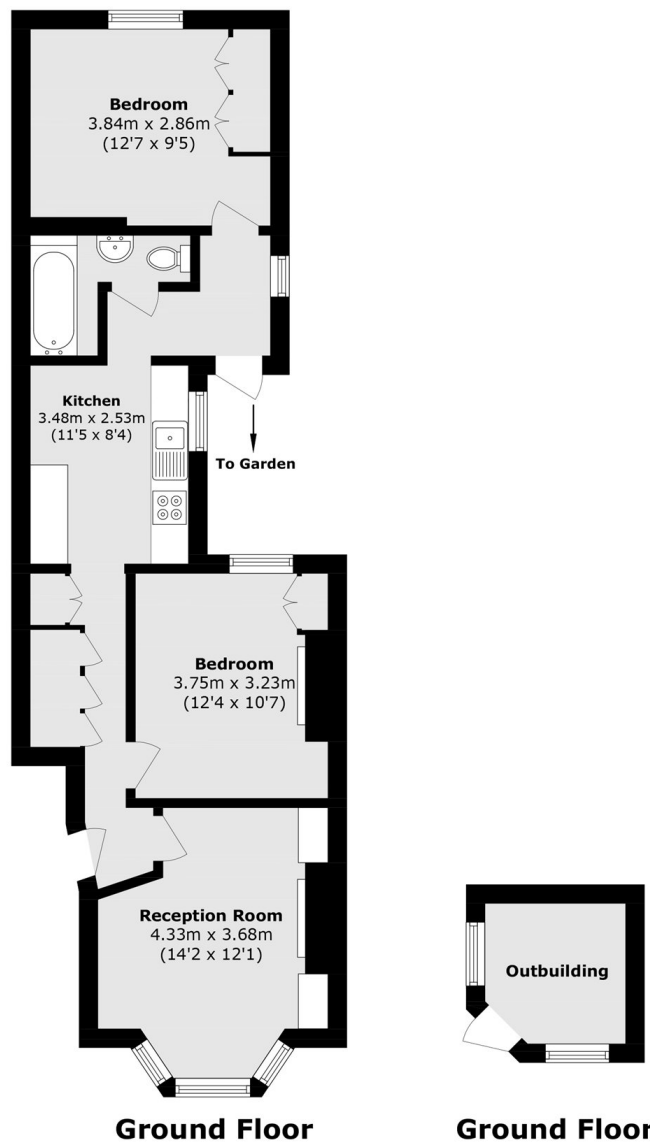
A beautiful ground floor apartment with an immaculate interior comprised of two double bedrooms, a stunning front reception room, a large eat-in kitchen and a three piece bathroom with a private garden. The property also benefits from an outbuilding and planning permission to extend (23/P1590).

Briscoe Road is nestled away in the heart of Colliers Wood and borders Wandsworth with the many shops and amenities of Tooting, Wimbeldon & Earsfield town centres on the doorstep. The wide green open spaces of Wandle Park and excellent transport links of Colliers Wood & Tooting Broadway Underground stations are also a stones throw away.

Features

- Two Double Bedrooms
- Stunning Interior
- Mature Garden
- Period Features
- Planning Permission Granted
- Garden Office

Briscoe Road, London, SW19



Total area (approx.): 62.8 sq. m (675.9 sq. ft)
Outbuilding area (approx.): 4.8 sq. m (51.6 sq. ft)