





## Bury Green Road, West Cheshunt, EN7 5AH

A rare corner-plot SEMI-DETACHED TWO BEDROOM home offering exceptional scope to extend or develop (STPP). The property features an open-plan entrance, spacious lounge/diner, kitchen, office, two generous sized bedrooms and a shower room. Externally, it boasts off-street parking with further potential (STPP), a substantial side plot and an impressive rear garden ideal for entertaining or growing. Additional benefits include an integral garage and privately owned solar panels generating an attractive income. Perfectly positioned in sought-after West Cheshunt, close to

### Key features

- Two Spacious Bedrooms
- Corner Plot With Potential to Extend (STPP)
- Generous-Sized Kitchen
- Owned Solar Panels Generating Income
- Semi-Detached
- Open Plan Lounge/Diner
- Off-Street Parking & Garage
- Close to Excellent Schools

### Property Information

Tenure  
Freehold

Council Tax  
D

EPC Rating  
B

Local Authority  
Broxbourne Borough Council



**Paul Wallace Estate Agents**  
Brookfield Centre  
Cheshunt  
Hertfordshire  
EN8 0NN



01992 781100



cheshunt@paulwallace.co.uk



www.paulwallace.co.uk



#### Opening Times

Mon - Fri	9 am to 6:30 pm
Sat	9 am to 5:30 pm
Sun	Closed
Bank Hols	Closed



Cheshunts leading estate agent.  
Please get in touch for your free  
property valuation.



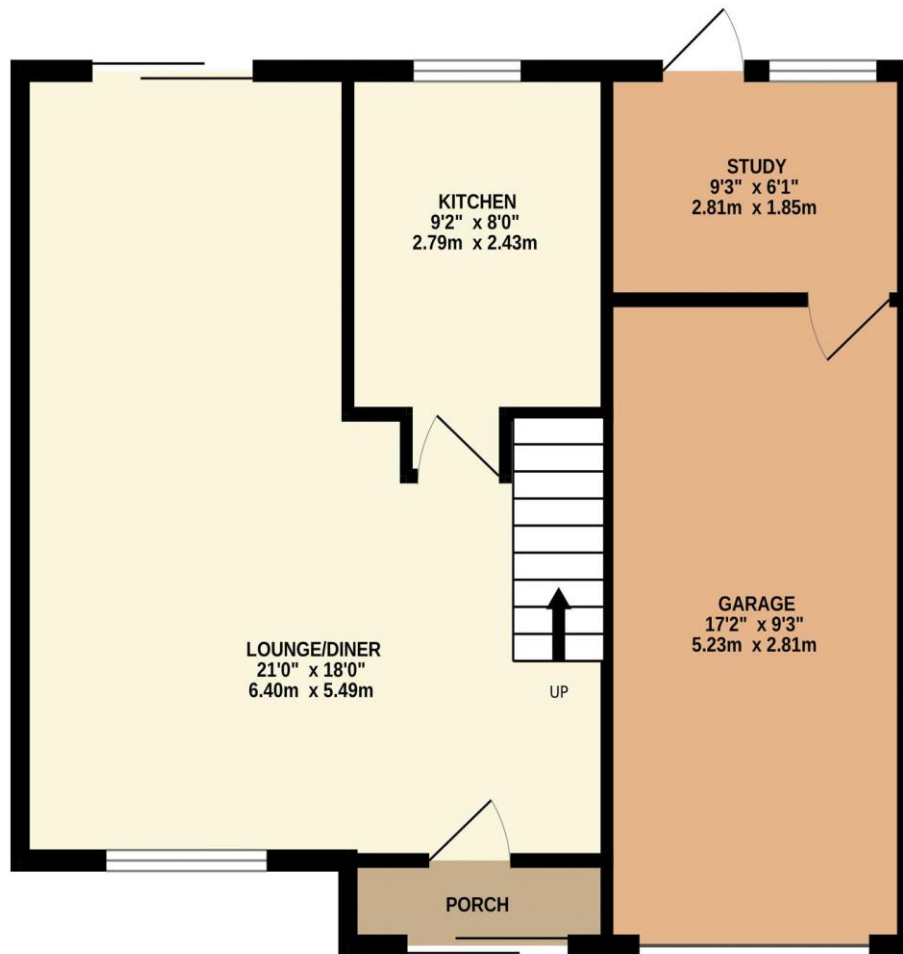




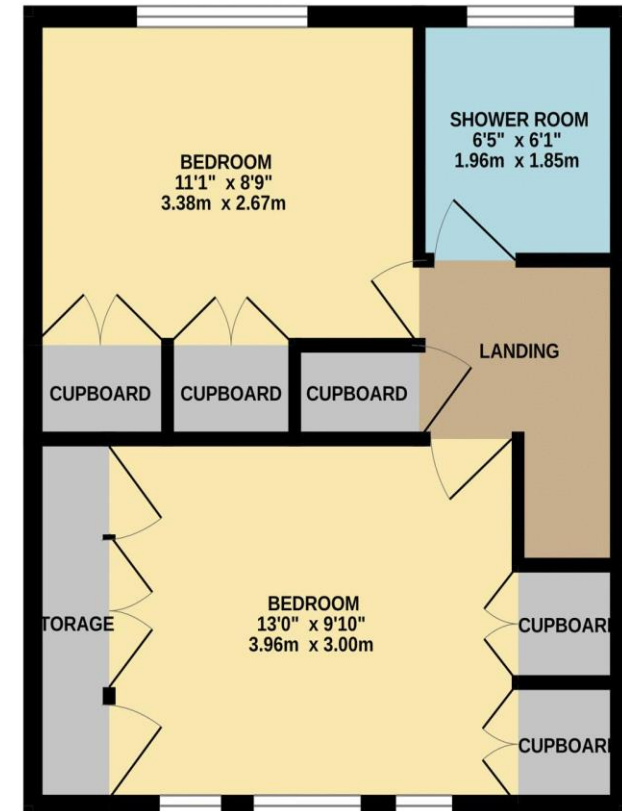




GROUND FLOOR  
611 sq.ft. (56.7 sq.m.) approx.



1ST FLOOR  
379 sq.ft. (35.2 sq.m.) approx.



TOTAL FLOOR AREA : 989 sq.ft. (91.9 sq.m.) approx.

Whilst every attempt has been made to ensure the accuracy of the floorplan contained here, measurements of doors, windows, rooms and any other items are approximate and no responsibility is taken for any error, omission or mis-statement. This plan is for illustrative purposes only and should be used as such by any prospective purchaser. The services, systems and appliances shown have not been tested and no guarantee as to their operability or efficiency can be given.

Made with Metropix ©2026













Registered Address: Unit 3 The Brookfield Centre, Cheshunt, Herts, EN8 0NN Company Registration Number: OC414280 | VAT Number: 276958046 ©2022 Paul Wallace Group LLP trading as Paul Wallace Estate Agents



**Paul Wallace Estate Agents**  
 Brookfield Centre  
 Cheshunt  
 Hertfordshire  
 EN8 0NN



01992 781100



cheshunt@paulwallace.co.uk



www.paulwallace.co.uk



**Opening Times**

Mon - Fri	9 am to 6:30 pm
Sat	9 am to 5:30 pm
Sun	Closed
Bank Hols	Closed



Agents note: Whilst every care has been taken to prepare these sales particulars, they are for guidance purposes only. All measurements are approximate and are for general guidance purposes only and whilst every care has been taken to ensure their accuracy, they should not be relied upon. Potential buyers are advised to recheck measurements.