



Reflection Apartments, White City Living, W12

£2,900 pcm

- Available 20th July 2026
- Eleventh floor apartment
- 1-bedroom
- 1 bathroom
- Private balcony
- 474 sq ft
- Open-plan living space
- Private balcony
- Contemporary kitchen
- 24-hour concierge
- Luxury Residents facilities
- 24 hr concierge servie
- Great transport links

Located on the 11th floor of Reflection Apartments within White City Living, this new, modern property offers an exceptional urban lifestyle.

One-London is delighted to present this stylish home, featuring a bright, open-plan kitchen and living area that leads directly to a private balcony. The modern kitchen comes fully equipped with integrated Miele appliances, complemented perfectly by a well-appointed reception room and a chic bathroom with contemporary finishes.

Residents enjoy exclusive access to world-class amenities. These luxury facilities include a state-of-the-art gym, swimming pool, hydrotherapy spa, sauna, steam room, private cinema, games room, club lounge, co-working spaces, and a 24-hour concierge service. Outside, beautifully landscaped gardens and tranquil water features provide a truly serene escape.

Positioned perfectly for ultimate convenience, the building sits right on the doorstep of Westfield shopping center, boasting over 500 premium shops and restaurants. Excellent transport links are provided by two local tube stations, Wood Lane and White City, both located within 200 meters. Available now, this property is ideal for professional individuals or couples seeking luxury city living.





ONE LONDON

PROPERTY

Reflection Apartments,
White City Living W12

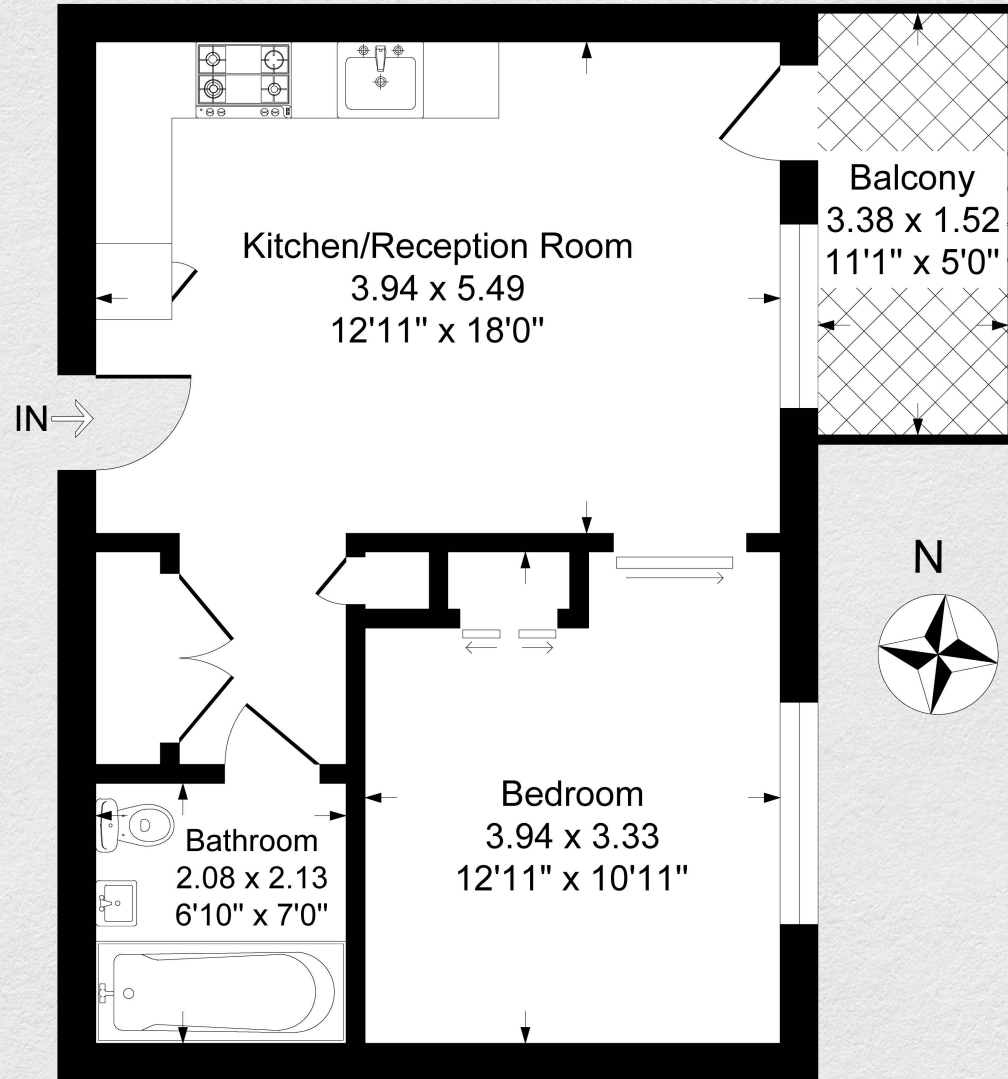
SIZE

474 sq ft

One bedroom | One bathroom

CONTACT

0207 856 0396
info@one-london.uk
www.one-london.uk



Eleventh Floor

** For illustration purposes only. Could not be to scale.
One-London aims to ensure accuracy but is not liable
for any discrepancies.