

Knighton Road, Knighton

£450,000 Freehold

A spacious four-bedroom Victorian terrace offering over 2,100 sq ft of accommodation, period features, a split-level kitchen diner, principal bedroom with en-suite, and an established rear garden.



0116 274 5544





Entrance Hall

Stairs to the first floor with an understairs storage cupboard, tiled flooring, cloak hooks, and a radiator.



Reception Room One

16' 8" x 11' 8" (5.08m x 3.56m)

(Measured into bay and into recess). Features a bay window to the front elevation, picture rail, built-in cupboards and bookshelving, and a fireplace with log burner and radiator.

Reception Room Two

15' 4" x 10' 4" (4.68m x 3.15m)

Original style door to rear garden, picture rail, dado rail, and a period style fireplace with a living flame effect gas fire and tiled hearth.



Kitchen Diner

27' 0" x 7' 1" (8.24m x 2.15m)

Split-level with picture rail and walk-in pantry (housing wall-mounted boiler and window to rear). Kitchen includes double-glazed window and door to side elevation, one and a half bowl stainless steel sink and drainer, range of wall/base units with work surfaces, built-in oven and gas hob with extractor, plumbing for dishwasher, part wood-panelled wall, underfloor heating, and a radiator.



Utility / WC

6' 3" x 5' 3" (1.90m x 1.60m)

Window to side elevation, low-level WC, wash hand basin, and plumbing for washing machine.

First Floor Landing

Bedroom One

12' 10" x 11' 8" (3.91m x 3.55m)

(Measured into recess). Two double-glazed sash windows to the front elevation, a period-style fireplace with a fire surround and tiled hearth, and a radiator.

En-Suite

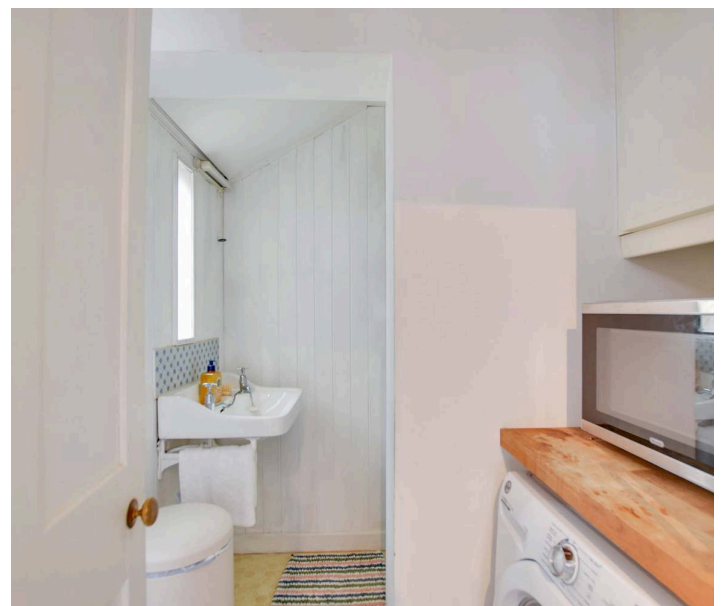
8' 9" x 4' 7" (2.66m x 1.40m)

Double-glazed sash window to front and side elevations, walk-in tiled shower cubicle with rainfall and handheld shower heads, pedestal wash hand basin, low-level WC, extractor fan, and heated chrome towel rail.

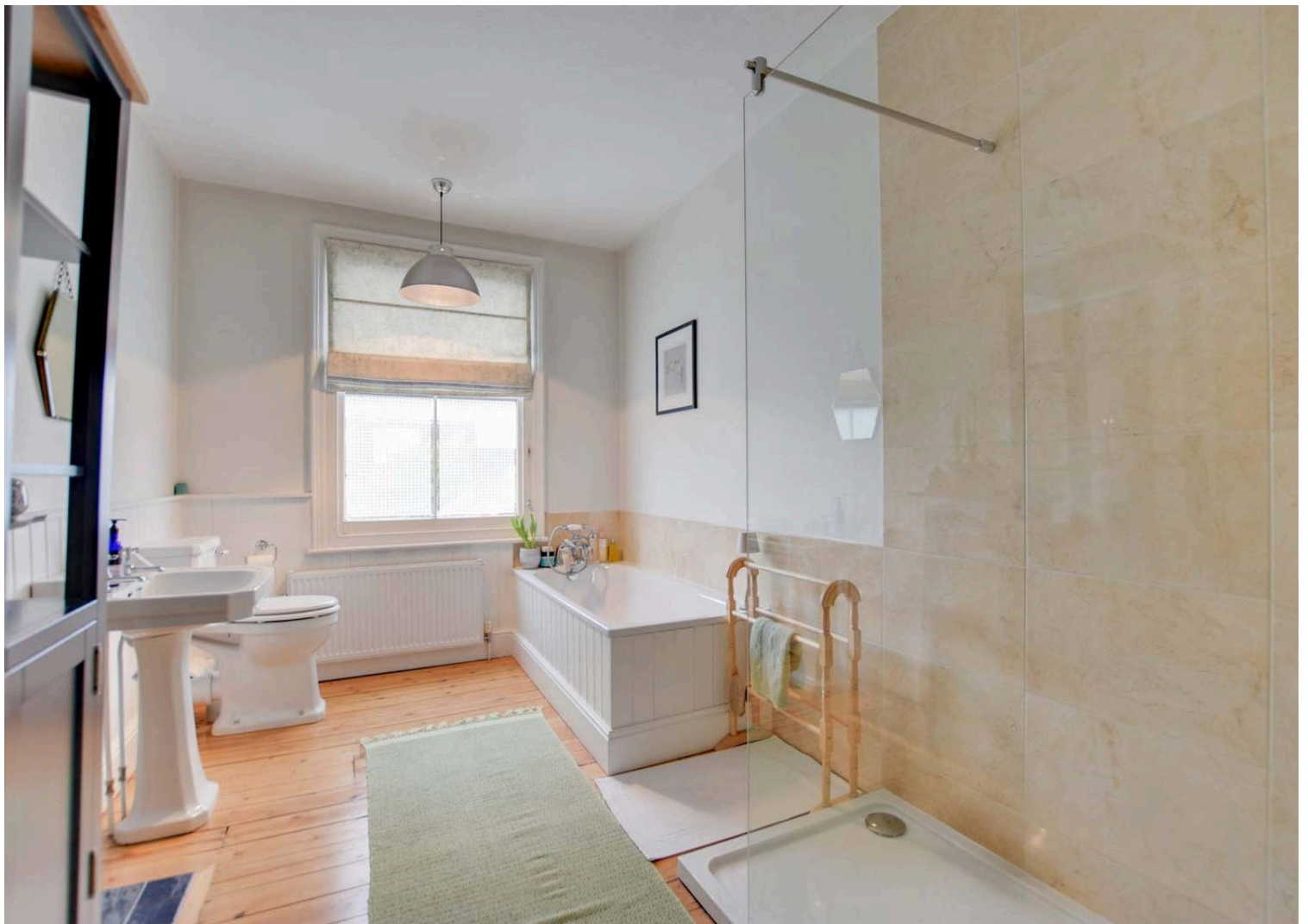
Bedroom Two

12' 0" x 11' 6" (3.65m x 3.50m)

(Measured into recess). Sash window to rear elevation, built-in understairs storage plus further storage cupboard, picture rail, period style fireplace with tiled hearth, and radiator.









Bathroom

13' 8" x 8' 0" (4.16m x 2.43m)

Sash window to rear elevation, bath with mixer tap shower attachment, separate walk-in tiled shower with rainfall/handheld heads, pedestal wash hand basin, low-level WC, wooden floor, part-tiled/part-wood-panelled walls, picture rail, radiator, and period style fireplace.

Second Floor Landing

Bedroom Three

9' 1" x 7' 11" (2.78m x 2.42m)

Double-glazed window to rear elevation, airing cupboard, built-in storage cupboard, loft access, and radiator.

Bedroom Four

10' 4" x 6' 2" (3.16m x 1.89m)

Skylight window to rear elevation and radiator.

Front Garden

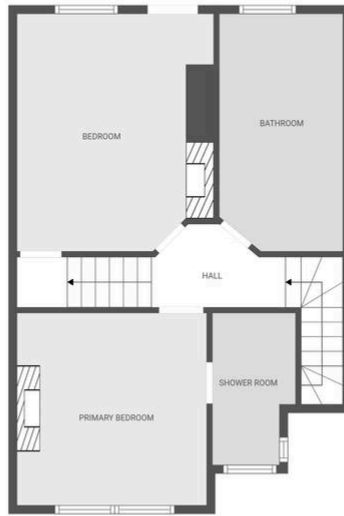
With inset shrubs, mature wisteria, paved path, and outside lighting.

Rear Garden

Paved seating area leading to a mainly lawned garden with well-stocked flower beds, established shrubs, and fruit trees. Features a walled perimeter, a further paved seating area, and gated rear access to a shared passage with a security gate.



Ground floor



1st floor



2nd floor

FLOOR PLAN CREATED BY CUBICASA APP. MEASUREMENTS DEEMED HIGHLY RELIABLE BUT NOT GUARANTEED.





The property is well located for everyday amenities and services, including local public and private schooling including Overdale Infant and Junior Schools and nursery day-care, Leicester City Centre and the University of Leicester, Leicester Royal Infirmary and Leicester General Hospital. The property is located close to Knighton Park and Queens Road shopping parade in neighbouring Clarendon Park with its specialist shops, bars, boutiques and restaurants.

Council Tax band: C

Tenure: Freehold

EPC Energy Efficiency Rating: D

We'll keep you moving...



We must inform all prospective purchasers that the measurements are taken by an electronic take and are provided as a guide only and they should not be used as accurate measurements. We have not tested any mains services, gas or electric appliances, or fixtures and fittings mentioned in these details, therefore, prospective purchasers should satisfy themselves before committing to purchase. Intending purchasers must satisfy themselves by inspection or otherwise to the correctness of the statements contained in these particulars. Knightsbridge Estate Agents (nor any person in their employment) has any authority to make any representation or warranty in relation to the property. The floor plans are not to scale, and are intended for use as a guide to the layout of the property only. They should not be used for any other purpose. We are required by law to conduct anti-money laundering checks on all those selling or buying a property. Whilst we retain responsibility for ensuring checks and any ongoing monitoring are carried out correctly, the initial checks are carried out on our behalf by Lifetime Legal who will contact you once you have agreed to instruct us in your sale or had an offer accepted on a property you wish to buy. The cost of these checks is £60 (incl. VAT), which covers the cost of obtaining relevant data and any manual checks and monitoring which might be required. This fee will need to be paid by you in advance of us publishing your property (in the case of a vendor) or issuing a memorandum of sale (in the case of a buyer), directly to Lifetime Legal, and is non-refundable. We will receive some of the fee taken by Lifetime Legal to compensate for its role in the provision of these checks.